



MLS 7033774 Land

\$245,000

5.13 Acres
Raw Land

TBD State Highway 371
Brainerd MN 56401

Status: Active

Description:

Prime commercial acreage along the highly traveled Highway 371 corridor! This centrally located property offers outstanding visibility and exposure. Provides ample space and excellent access for a wide range of business ventures. Premier location with unbeatable traffic and growth potential.

Additional Details:

Lot Acres	5.13
Lot Dimensions	868x644x697
School District	896
Taxes	\$906
Taxes with Assessments	\$906
Tax Year	2025

Additional Features:

Driving Directions:

From Baxter, head NW on 371 (Two) Miles.



Listed By:
Boll Realty

Affinity Real Estate Inc. participates in the Regional Multiple Listing Service of Minnesota, Inc Broker Reciprocity (sm) program, allowing us to display other broker's listings on our website. All properties are subject to prior sale, change or withdrawal.



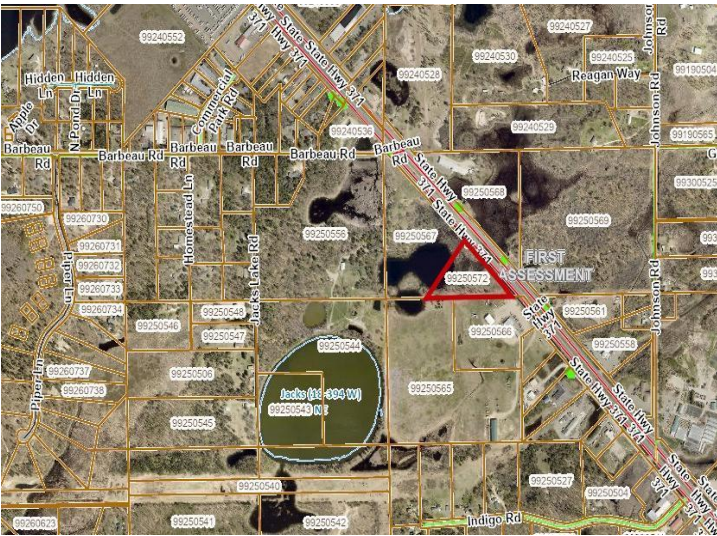
Call Affinity Real Estate

218-237-3333

info@affinityrealestate.com



Affinity Real Estate - 600 Park Avenue South - Park Rapids MN 56470



website: www.AffinityRealEstate.com | email: info@affinityrealestate.com | office: 218-237-3333 | fax:218-237-3377



\$245,000
MLS 7033774 Land
TBD State Highway 371
Brainerd MN 56401



website: www.AffinityRealEstate.com | email: info@affinityrealestate.com | office: 218-237-3333 | fax:218-237-3377



\$245,000
MLS 7033774 Land
TBD State Highway 371
Brainerd MN 56401



website: www.AffinityRealEstate.com | email: info@affinityrealestate.com | office: 218-237-3333 | fax:218-237-3377



\$245,000
MLS 7033774 Land
TBD State Highway 371
Brainerd MN 56401



website: www.AffinityRealEstate.com | email: info@affinityrealestate.com | office: 218-237-3333 | fax:218-237-3377



\$245,000
MLS 7033774 Land
TBD State Highway 371
Brainerd MN 56401



website: www.AffinityRealEstate.com | email: info@affinityrealestate.com | office: 218-237-3333 | fax:218-237-3377



\$245,000
MLS 7033774 Land
TBD State Highway 371
Brainerd MN 56401