



MLS 7034347 Commercial

**\$699,000**

1429 Miles Avenue  
Bemidji MN 56601

Status: Active

**Description:**

- Two Commercial Buildings – Approx. 7,400 Total Sq Ft
- 3,600 Sq Ft Building featuring office space and shop area with three overhead garage doors
- 3,800 Sq Ft Insulated & Heated Building with 12' ceilings and dock door
- Just Under 2 Acres with ample yard space for equipment, storage, or parking
- High Visibility Location ideal for service, contractor, warehouse, or light industrial use
- Room to Expand with space for additional buildings or future growth

Versatile property offering functional workspace, easy access, and excellent exposure for a variety of commercial operations.

**Additional Details:**

Year Built	1974
Lot Acres	1.82
Lot Dimensions	300x265
Garage Stalls	3
School District	1386
Taxes	\$6,256
Taxes with Assessments	\$6,256
Tax Year	2025

**Additional Features:**

**Fuel:** Array **Garage:** 3 **Heat:** Forced Air **Sewer:** Private Sewer **Water:** 4-Inch Submersible, Drilled, Private

**Driving Directions:**

South of Vo-Tech Miles Ave SE left, property on the left



Listed By:  
Andy Williams Realty Group, LLC

Affinity Real Estate Inc. participates in the Regional Multiple Listing Service of Minnesota, Inc Broker Reciprocity (sm) program, allowing us to display other broker's listings on our website. All properties are subject to prior sale, change or withdrawal.



Call Affinity Real Estate

**218-237-3333**

[info@affinityrealestate.com](mailto:info@affinityrealestate.com)



Affinity Real Estate - 600 Park Avenue South - Park Rapids MN 56470



website: [www.AffinityRealEstate.com](http://www.AffinityRealEstate.com) | email: [info@affinityrealestate.com](mailto:info@affinityrealestate.com) | office: 218-237-3333 | fax:218-237-3377

**Affinity**  
REAL ESTATE INC

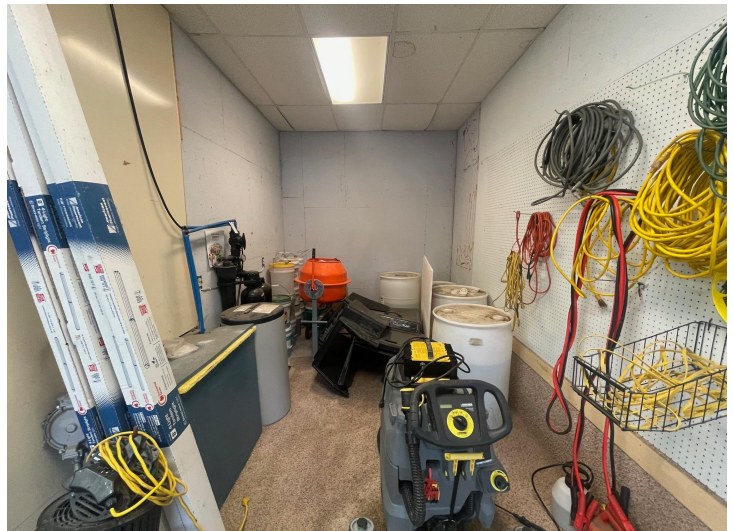
**\$699,000**  
MLS 7034347 Commercial  
1429 Miles Avenue  
Bemidji MN 56601



website: [www.AffinityRealEstate.com](http://www.AffinityRealEstate.com) | email: [info@affinityrealestate.com](mailto:info@affinityrealestate.com) | office: 218-237-3333 | fax:218-237-3377



**\$699,000**  
MLS 7034347 Commercial  
1429 Miles Avenue  
Bemidji MN 56601



website: [www.AffinityRealEstate.com](http://www.AffinityRealEstate.com) | email: [info@affinityrealestate.com](mailto:info@affinityrealestate.com) | office: 218-237-3333 | fax:218-237-3377



**\$699,000**  
MLS 7034347 Commercial  
1429 Miles Avenue  
Bemidji MN 56601



website: [www.AffinityRealEstate.com](http://www.AffinityRealEstate.com) | email: [info@affinityrealestate.com](mailto:info@affinityrealestate.com) | office: 218-237-3333 | fax:218-237-3377



**\$699,000**  
MLS 7034347 Commercial  
1429 Miles Avenue  
Bemidji MN 56601