



MLS 7034368 Residential

\$975,000

4,322 sq ft
4 bedrooms
4 baths

44148 Ida's Road
Osage MN 56570

Status: Active

Description:

Impressive True North–built log home on 5 acres with 500' of shoreline on Shell Lake. Built in 2003, this beautifully crafted 4,322 sq ft, 4-bedroom, 4-bath home showcases quality and craftsmanship throughout. The great room features a vaulted wood ceiling and cozy gas fireplace. The main level suite offers a private retreat with a jacuzzi tub, while the home also includes an office, loft, and a lower-level bar area perfect for entertaining. Quality construction includes an ICF foundation, high-end Canadian windows, slate and pine flooring, custom hickory cabinetry, and in-floor heat.

Enjoy breathtaking sunset lake views framed by mature pines in a private setting with abundant wildlife. The property also features a finished and heated 30' x 40' shop for storage, hobbies, or projects.

Conveniently located 30 minutes from Detroit Lakes and Park Rapids, offering the perfect blend of seclusion with accessibility.

Additional Details:

Year Built	2003
Lot Acres	5.1
Lot Dimensions	irregular
Garage Stalls	2
School District	1106
Taxes	\$6,388
Taxes with Assessments	\$6,388
Tax Year	2025

Additional Features:

Basement: Daylight/Lookout Windows, Egress Window(s), Finished, Full, Storage Space, Sump Pump, Walkout **Fuel:** Array **Garage:** 2 **Heat:** Dual Fuel/Off Peak, Forced Air, Fireplace(s), Hot Water, In-Floor Heating, Outdoor Boiler **Sewer:** Tank with Drainage Field **Water:** Drilled, Private, Well **Air Conditioning:** Central Air

Driving Directions:

44148 Ida's rd, Osage. Follow the signs



Listed By:
Counselor Realty Detroit Lakes

Affinity Real Estate Inc. participates in the Regional Multiple Listing Service of Minnesota, Inc Broker Reciprocity (sm) program, allowing us to display other broker's listings on our website. All properties are subject to prior sale, change or withdrawal.



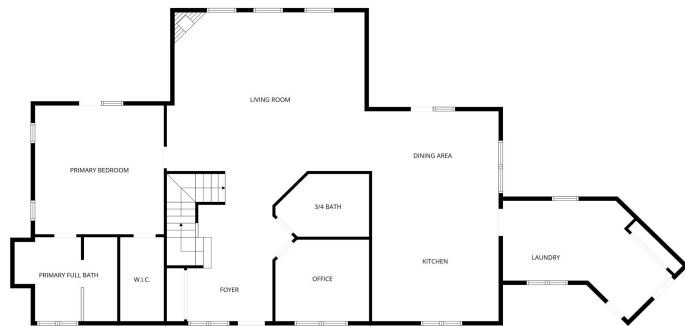
Call Affinity Real Estate

218-237-3333

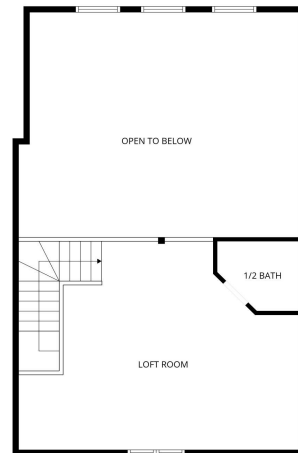
info@affinityrealestate.com



Affinity Real Estate - 600 Park Avenue South - Park Rapids MN 56470



FLOOR PLAN CREATED BY CUBICASA APP. MEASUREMENTS DEEMED HIGHLY RELIABLE BUT NOT GUARANTEED.



FLOOR PLAN CREATED BY CUBICASA APP. MEASUREMENTS DEEMED HIGHLY RELIABLE BUT NOT GUARANTEED.

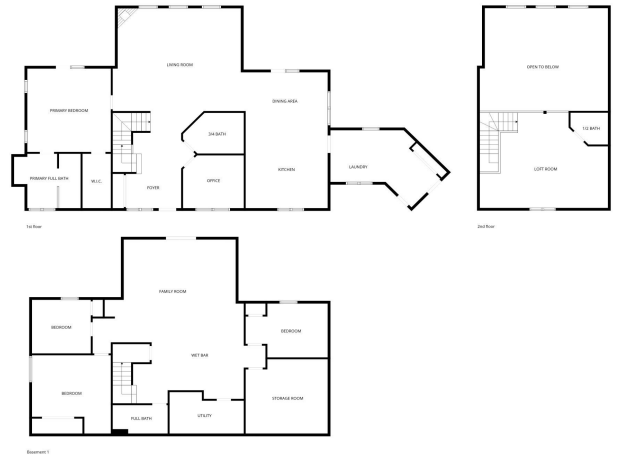
website: www.AffinityRealEstate.com | email: info@affinityrealestate.com | office: 218-237-3333 | fax: 218-237-3377



\$975,000
 MLS 7034368 Residential
 44148 Ida's Road
 Osage MN 56570



FLOOR PLAN CREATED BY CUBICASA APP. MEASUREMENTS DEEMED HIGHLY RELIABLE BUT NOT GUARANTEED.



FLOOR PLAN CREATED BY CUBICASA APP. MEASUREMENTS DEEMED HIGHLY RELIABLE BUT NOT GUARANTEED.



These data are provided on an "AS-IS" basis, without warranty of any type, expressed or implied, including but not limited to any warranty as to their performance, merchantability, or fitness for any particular purpose.	1-2-267	Date: 3/9/2026
	44148 Idas Rd Becker County	

website: www.AffinityRealEstate.com | email: info@affinityrealestate.com | office: 218-237-3333 | fax:218-237-3377



\$975,000
 MLS 7034368 Residential
 44148 Ida's Road
 Osage MN 56570

website: www.AffinityRealEstate.com | email: info@affinityrealestate.com | office: 218-237-3333 | fax:218-237-3377



\$975,000
MLS 7034368 Residential
44148 Ida's Road
Osage MN 56570

website: www.AffinityRealEstate.com | email: info@affinityrealestate.com | office: 218-237-3333 | fax:218-237-3377



\$975,000
MLS 7034368 Residential
44148 Ida's Road
Osage MN 56570

website: www.AffinityRealEstate.com | email: info@affinityrealestate.com | office: 218-237-3333 | fax:218-237-3377



\$975,000
MLS 7034368 Residential
44148 Ida's Road
Osage MN 56570

website: www.AffinityRealEstate.com | email: info@affinityrealestate.com | office: 218-237-3333 | fax:218-237-3377



\$975,000
MLS 7034368 Residential
44148 Ida's Road
Osage MN 56570

website: www.AffinityRealEstate.com | email: info@affinityrealestate.com | office: 218-237-3333 | fax:218-237-3377



\$975,000
MLS 7034368 Residential
44148 Ida's Road
Osage MN 56570

website: www.AffinityRealEstate.com | email: info@affinityrealestate.com | office: 218-237-3333 | fax:218-237-3377



\$975,000
MLS 7034368 Residential
44148 Ida's Road
Osage MN 56570

website: www.AffinityRealEstate.com | email: info@affinityrealestate.com | office: 218-237-3333 | fax:218-237-3377



\$975,000
MLS 7034368 Residential
44148 Ida's Road
Osage MN 56570

website: www.AffinityRealEstate.com | email: info@affinityrealestate.com | office: 218-237-3333 | fax:218-237-3377



\$975,000
MLS 7034368 Residential
44148 Ida's Road
Osage MN 56570

website: www.AffinityRealEstate.com | email: info@affinityrealestate.com | office: 218-237-3333 | fax:218-237-3377



\$975,000
MLS 7034368 Residential
44148 Ida's Road
Osage MN 56570

website: www.AffinityRealEstate.com | email: info@affinityrealestate.com | office: 218-237-3333 | fax:218-237-3377



\$975,000
MLS 7034368 Residential
44148 Ida's Road
Osage MN 56570

website: www.AffinityRealEstate.com | email: info@affinityrealestate.com | office: 218-237-3333 | fax:218-237-3377



\$975,000
MLS 7034368 Residential
44148 Ida's Road
Osage MN 56570

website: www.AffinityRealEstate.com | email: info@affinityrealestate.com | office: 218-237-3333 | fax:218-237-3377



\$975,000
MLS 7034368 Residential
44148 Ida's Road
Osage MN 56570