



MLS 7034423 Land

**\$57,900**

2.02 Acres  
Rough Grade

L44 B1 Navaho Trail  
Breezy Point MN 56472

Status: Active



**Description:**

Ready to build? Here is a rough graded 2.01 acre lot on city tarred road, close to all Breezy Point has to offer. Look forward to everyday sunset views. 2.01 acre lot feels private due to power line 30 ft easement west and 1 acre lot to east. Seller has cleared, graded and installed the septic tank and drain-field 2023, which has been approved and inspected. Just needs to be connected to a home. Seller also has bid for Well installation, lot layout, blueprint for 2 bedroom home 1296sf w/o garage (the smallest as per city zoning). Come take a look!!

**Additional Details:**

Lot Acres	2.02
Lot Dimensions	217x405x217x405
School District	909
Taxes	\$222
Taxes with Assessments	\$222
Tax Year	2026

**Additional Features:**

**Driving Directions:**

"GPS" the address 7462 Navaho Trl - it's one more driveway west to Lot 44. From Breezy Point Resort gates go west on CR4 to RT on Dove St to LT on Ranchette to RT on Navaho just past 7462 on RT see for sale sign.



Listed By:  
Edina Realty, Inc.

Affinity Real Estate Inc. participates in the Regional Multiple Listing Service of Minnesota, Inc Broker Reciprocity (sm) program, allowing us to display other broker's listings on our website. All properties are subject to prior sale, change or withdrawal.



Call Affinity Real Estate

**218-237-3333**

[info@affinityrealestate.com](mailto:info@affinityrealestate.com)

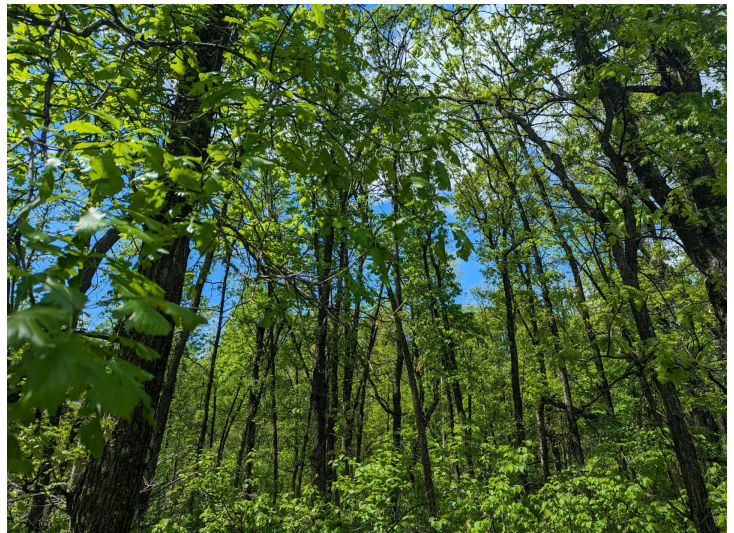


Affinity Real Estate - 600 Park Avenue South - Park Rapids MN 56470



These data are provided on an "AS-IS" basis, without warranty of any type expressed or implied, including but not limited to any warranty as to their performance, merchantability, or fitness for any particular purpose.

L44 B1 Navajo Trail  
2.01 Acres  
Date: 5/24/2024 Time: 9:52 PM



website: [www.AffinityRealEstate.com](http://www.AffinityRealEstate.com) | email: [info@affinityrealestate.com](mailto:info@affinityrealestate.com) | office: 218-237-3333 | fax: 218-237-3377



**\$57,900**  
MLS 7034423 Land  
L44 B1 Navaho Trail  
Breezy Point MN 56472



website: [www.AffinityRealEstate.com](http://www.AffinityRealEstate.com) | email: [info@affinityrealestate.com](mailto:info@affinityrealestate.com) | office: 218-237-3333 | fax:218-237-3377



**\$57,900**  
MLS 7034423 Land  
L44 B1 Navaho Trail  
Breezy Point MN 56472