

MLS 7034444 Land

\$75,900

12.5 Acres
Raw Land

00 County Rd 39
Laporte MN 56461

Status: Active

Description:

OWNER FINANCING AVAILABLE! Peaceful Northwoods living awaits on this beautiful 12.50-acre fully wooded property in Laporte, offering privacy, towering trees, and plenty of space for a cabin, getaway, or future homesite. The area is known for its quiet lakes, outdoor recreation, and access to the scenic Paul Bunyan State Trail, perfect for biking, hiking, and snowmobiling through the forest. You'll also be a short drive from Bemidji, the region's hub for shopping, dining, and year-round events. Nearby lakes and wilderness areas make it a dream spot for fishing, hunting, and enjoying Minnesota's four-season beauty. Best of all, this 12.5-acre wooded tract is priced below market value—making it one of the best deals on the market right now.

Additional Details:

Lot Acres	12.5
Lot Dimensions	665x325x330x1310
School District	1375
Taxes	\$240
Taxes with Assessments	\$240
Tax Year	2025

Additional Features:

Driving Directions:

From Laporte, County Rd 39 South to land on right.



Listed By:
Jeff Hagel

Affinity Real Estate Inc. participates in the Regional Multiple Listing Service of Minnesota, Inc Broker Reciprocity (sm) program, allowing us to display other broker's listings on our website. All properties are subject to prior sale, change or withdrawal.



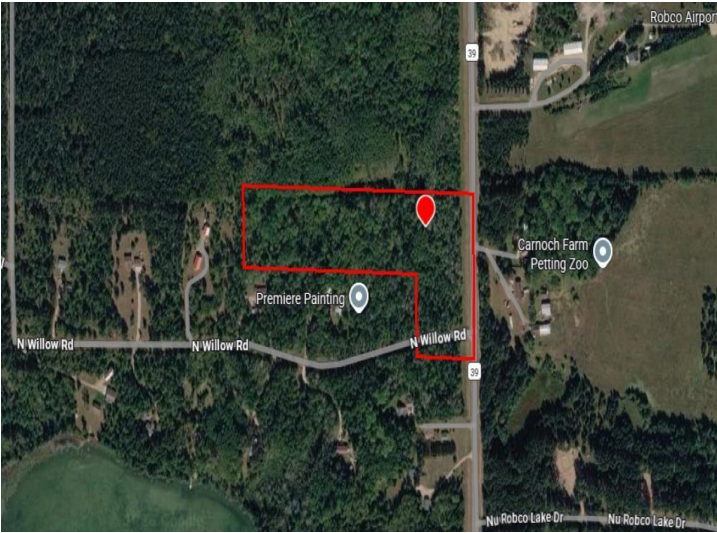
Call Affinity Real Estate

218-237-3333

info@affinityrealestate.com



Affinity Real Estate - 600 Park Avenue South - Park Rapids MN 56470



website: www.AffinityRealEstate.com | email: info@affinityrealestate.com | office: 218-237-3333 | fax:218-237-3377



\$75,900
MLS 7034444 Land
00 County Rd 39
Laporte MN 56461