



MLS 7034454 Farm

\$900,000

200 Acres

21601 300th Street
Bagley MN 56621

Status: Active

Description:

Rare opportunity to buy a very scenic 200-acre farm in the heart of Paul Bunyan country! Property consists of a large log home with an oversized attached double garage, newer 50' x 100' stud framed outbuilding with 16' side walls that is wired with outlets and O.H. lights, another stud framed storage building that is 40' x 80' with 16' side walls, 14' x 24' storage building with concrete floor, an additional old "hip roof" barn and other smaller outbuilding that are in poor condition. The acreage offers a nice mix of wooded (approx. 110 ? wooded and 89 ? tillable/pasture). The tillable has a CPI of 75. The wooded portion of the property contains several trails and many mature hardwoods and conifers. As a bonus, there are 1000's of acres of adjacent public land that are relatively inaccessible to the general public, making it a wildlife sanctuary! The home has two wood-burning fireplaces (one in the lower-level family room and upstairs living room), vaulted ceilings in the Kit, LR, and DR area, and a south-facing covered porch offering panoramic views. The home sits 1/4 mile off the road, offering lots of privacy. Another bonus, 4 of the property corners have survey markers!

Additional Details:

Year Built	1984
Lot Acres	200
Lot Dimensions	1320x5280
Garage Stalls	2
School District	853
Taxes	\$1,746
Taxes with Assessments	\$1,746
Tax Year	2025

Additional Features:

Basement: None **Fuel:** Array **Garage:** 2 **Heat:** Boiler, Radiant **Sewer:** Private Sewer **Water:** 4-Inch Submersible, Private **Air Conditioning:** None

Driving Directions:

South of Bagley stop lights for 5.75 miles on #92, left (east) on 300th St for 2.5 miles, home/property on the right



Listed By:
Realty Experts, LLC

Affinity Real Estate Inc. participates in the Regional Multiple Listing Service of Minnesota, Inc Broker Reciprocity (sm) program, allowing us to display other broker's listings on our website. All properties are subject to prior sale, change or withdrawal.



Call Affinity Real Estate

218-237-3333

info@affinityrealestate.com



Affinity Real Estate - 600 Park Avenue South - Park Rapids MN 56470



website: www.AffinityRealEstate.com | email: info@affinityrealestate.com | office: 218-237-3333 | fax:218-237-3377

Affinity
REAL ESTATE INC

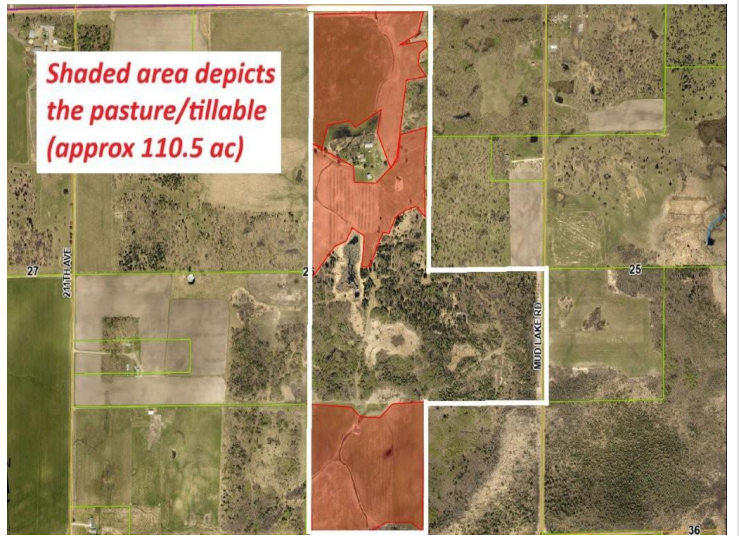
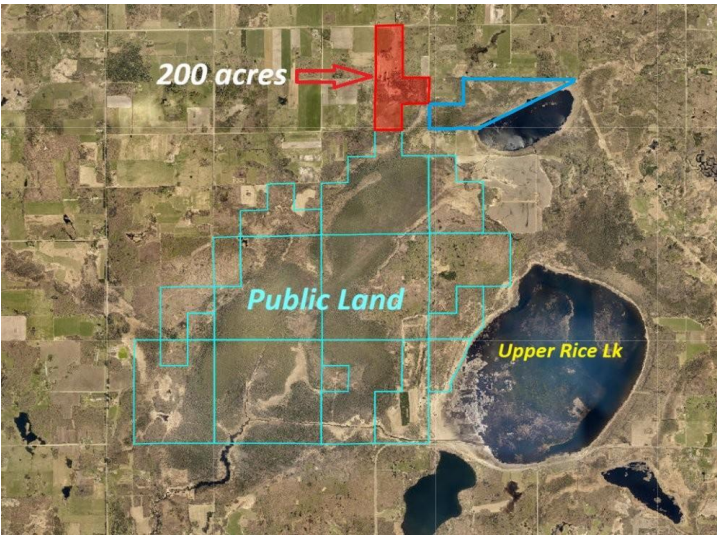
\$900,000
MLS 7034454 Farm
21601 300th Street
Bagley MN 56621



website: www.AffinityRealEstate.com | email: info@affinityrealestate.com | office: 218-237-3333 | fax:218-237-3377



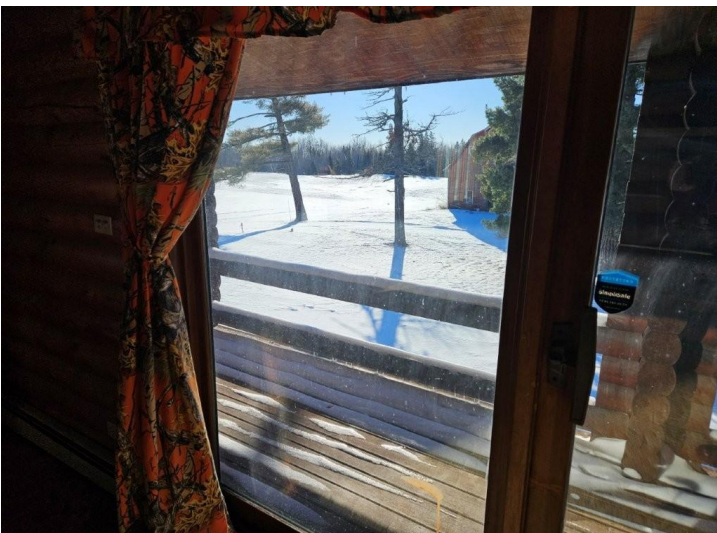
\$900,000
MLS 7034454 Farm
21601 300th Street
Bagley MN 56621



website: www.AffinityRealEstate.com | email: info@affinityrealestate.com | office: 218-237-3333 | fax:218-237-3377



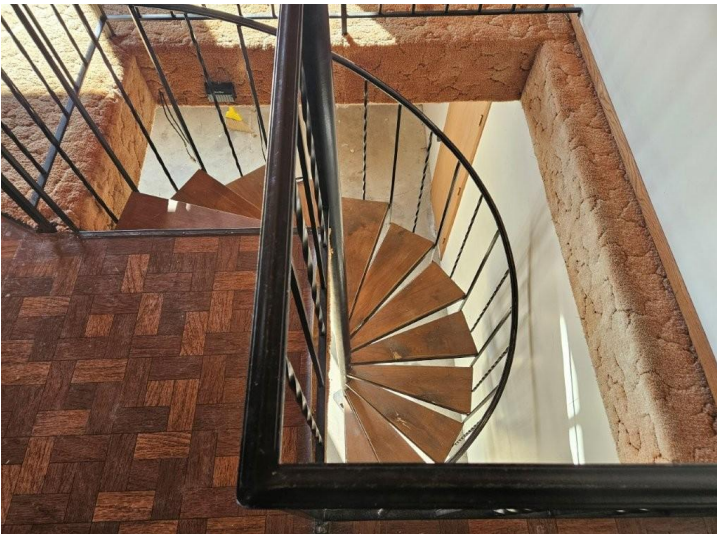
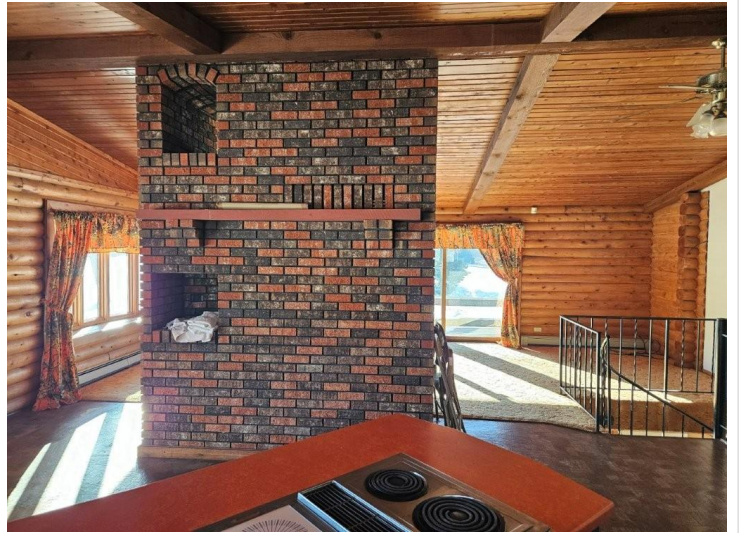
\$900,000
MLS 7034454 Farm
21601 300th Street
Bagley MN 56621



website: www.AffinityRealEstate.com | email: info@affinityrealestate.com | office: 218-237-3333 | fax:218-237-3377

Affinity
REAL ESTATE INC

\$900,000
MLS 7034454 Farm
21601 300th Street
Bagley MN 56621



website: www.AffinityRealEstate.com | email: info@affinityrealestate.com | office: 218-237-3333 | fax: 218-237-3377

Affinity
REAL ESTATE INC

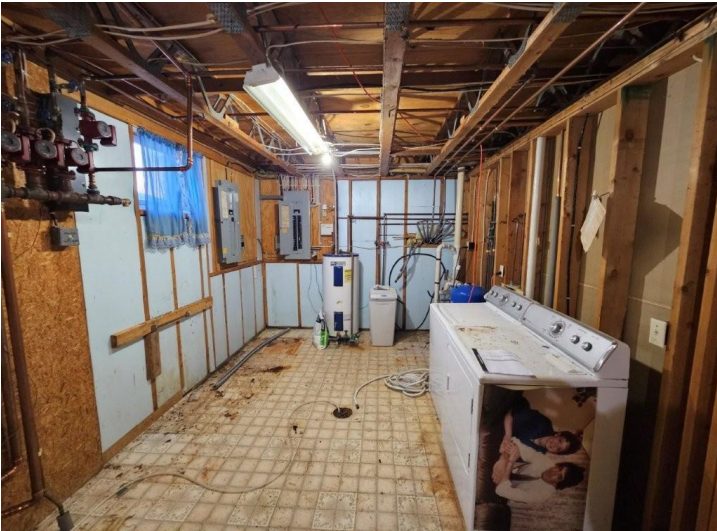
\$900,000
MLS 7034454 Farm
21601 300th Street
Bagley MN 56621



website: www.AffinityRealEstate.com | email: info@affinityrealestate.com | office: 218-237-3333 | fax:218-237-3377



\$900,000
MLS 7034454 Farm
21601 300th Street
Bagley MN 56621



website: www.AffinityRealEstate.com | email: info@affinityrealestate.com | office: 218-237-3333 | fax: 218-237-3377

Affinity
REAL ESTATE INC

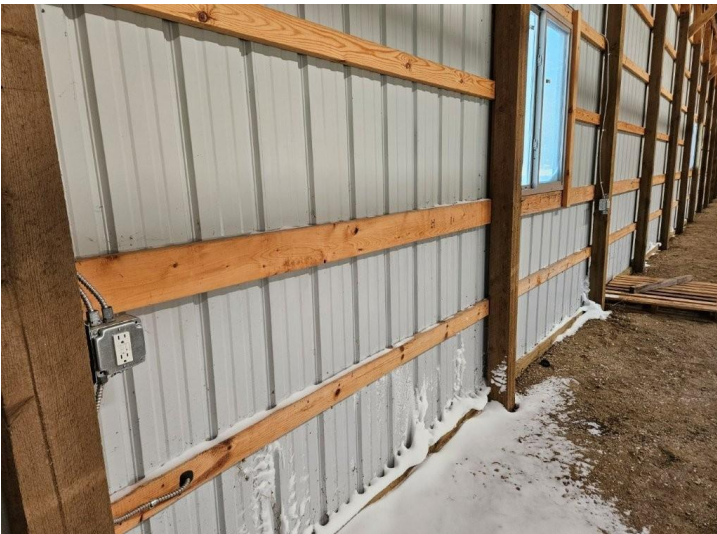
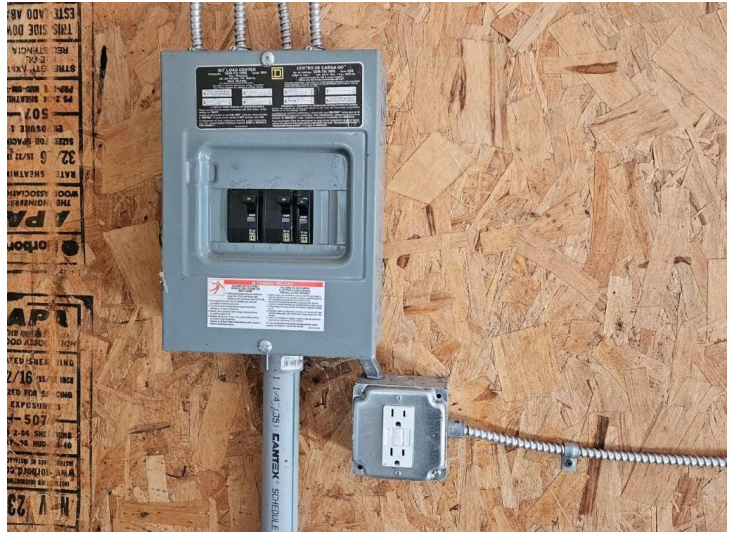
\$900,000
MLS 7034454 Farm
21601 300th Street
Bagley MN 56621



website: www.AffinityRealEstate.com | email: info@affinityrealestate.com | office: 218-237-3333 | fax:218-237-3377

Affinity
REAL ESTATE INC

\$900,000
MLS 7034454 Farm
21601 300th Street
Bagley MN 56621



website: www.AffinityRealEstate.com | email: info@affinityrealestate.com | office: 218-237-3333 | fax:218-237-3377



\$900,000
MLS 7034454 Farm
21601 300th Street
Bagley MN 56621



website: www.AffinityRealEstate.com | email: info@affinityrealestate.com | office: 218-237-3333 | fax:218-237-3377



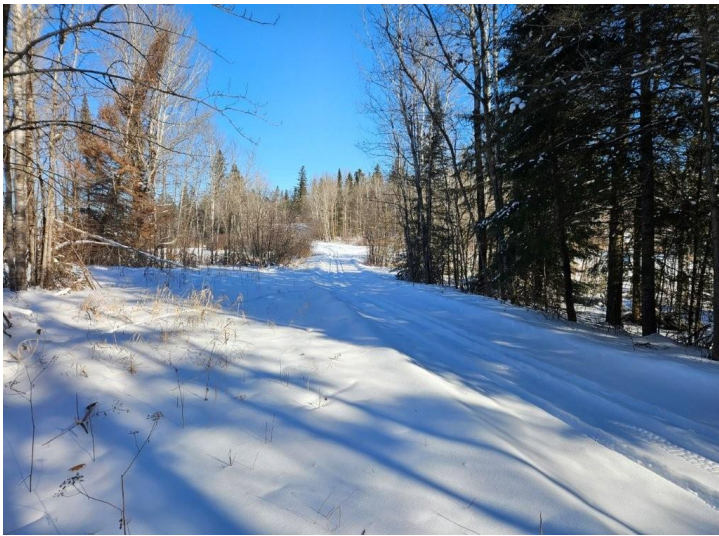
\$900,000
MLS 7034454 Farm
21601 300th Street
Bagley MN 56621



website: www.AffinityRealEstate.com | email: info@affinityrealestate.com | office: 218-237-3333 | fax:218-237-3377



\$900,000
MLS 7034454 Farm
21601 300th Street
Bagley MN 56621



website: www.AffinityRealEstate.com | email: info@affinityrealestate.com | office: 218-237-3333 | fax:218-237-3377



\$900,000
MLS 7034454 Farm
21601 300th Street
Bagley MN 56621



website: www.AffinityRealEstate.com | email: info@affinityrealestate.com | office: 218-237-3333 | fax:218-237-3377

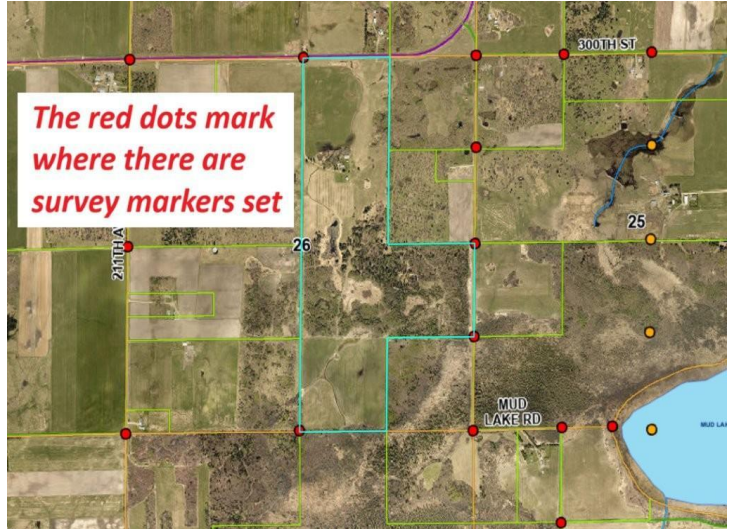


\$900,000
MLS 7034454 Farm
21601 300th Street
Bagley MN 56621



Clearwater County, Minnesota (MN029)
 Clearwater County, Minnesota (MN029) @

Map Unit Symbol	Map Unit Name	Acres in ADI	Percent of ADI
40B	Nebish loam, 1 to 8 percent slopes	86.0	44.0%
40C	Nebish loam, 3 to 15 percent slopes	32.3	16.5%
125	Beltrami loam, 1 to 3 percent slopes	36.4	18.6%
346	Talmoon loam	14.0	7.2%
544	Cathro muck, occasionally ponded, 0 to 1 percent slopes	8.4	4.3%
672	Willisippi loam	0.0	0.0%
709C	Lengby fine sandy loam, 8 to 15 percent slopes	4.7	2.4%
797	Moselake and Lustron.solic. n	7.7	3.9%



website: www.AffinityRealEstate.com | email: info@affinityrealestate.com | office: 218-237-3333 | fax:218-237-3377



\$900,000
 MLS 7034454 Farm
 21601 300th Street
 Bagley MN 56621