



MLS 7034462 Lake Land

\$8,500

Description:

Amazing corner lot Nicely wooded with mature trees. Access to 4 nearby lakes. the Lot size is 118' by 204' by 95' by 238' . it is mostly flat and all high ground and the perfect spot to build your home or cabin. Electric is to the Lot Line. Plowed roads for year round use. Amenities include Clubhouse on fawn lake with swimming pool, sand beach, sports courts, showers, full kitchen and more. 4 lakes to enjoy. Private Campground, ATV/Golf Cart friendly roads and Its on the state snowmobile trail. YEAR ROUND ENJOYMENT. Agent/Owner

Additional Details:

Lot Acres	0.56
Lot Dimensions	117 x 204 x 95 x 238
School District	2170
Taxes	\$30
Taxes with Assessments	\$24
Tax Year	2025

Additional Features:

Driving Directions:

County Road 17 to east on Pacer Drive to Right on Pleasant Drive to left onto Plum Drive. Property on left, yellow sign.



Listed By:
Smart Choice Realty

Affinity Real Estate Inc. participates in the Regional Multiple Listing Service of Minnesota, Inc Broker Reciprocity (sm) program, allowing us to display other broker's listings on our website. All properties are subject to prior sale, change or withdrawal.



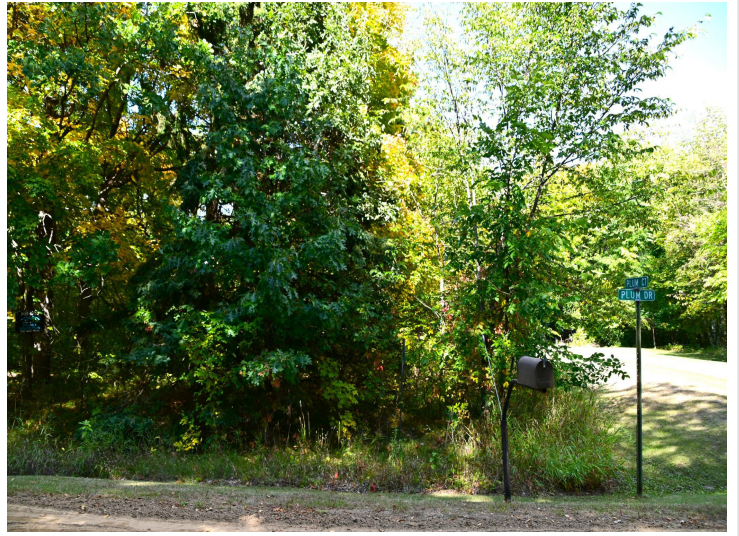
Call Affinity Real Estate

218-237-3333

info@affinityrealestate.com



Affinity Real Estate - 600 Park Avenue South - Park Rapids MN 56470



website: www.AffinityRealEstate.com | email: info@affinityrealestate.com | office: 218-237-3333 | fax:218-237-3377



\$8,500
MLS 7034462 Lake Land
TBD Plum Drive
Browerville MN 56438



website: www.AffinityRealEstate.com | email: info@affinityrealestate.com | office: 218-237-3333 | fax:218-237-3377



\$8,500
MLS 7034462 Lake Land
TBD Plum Drive
Browerville MN 56438



website: www.AffinityRealEstate.com | email: info@affinityrealestate.com | office: 218-237-3333 | fax:218-237-3377



\$8,500
MLS 7034462 Lake Land
TBD Plum Drive
Browerville MN 56438



Crystal Clear Water



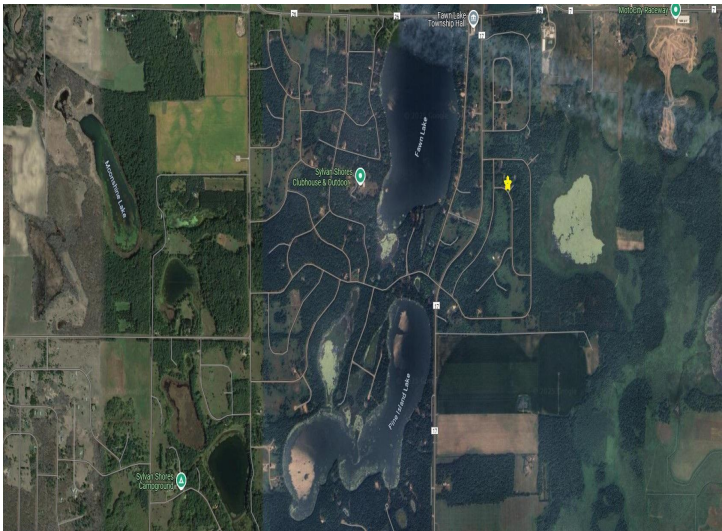
Private Boat Landing



Great Fishing



Handicap accessible



website: www.AffinityRealEstate.com | email: info@affinityrealestate.com | office: 218-237-3333 | fax:218-237-3377



\$8,500
MLS 7034462 Lake Land
TBD Plum Drive
Browerville MN 56438