



MLS 7034470 Lake Land

**\$8,500**

**Description:**

This LAKE VIEW Lot is absolutely breathtaking and overlooks Turtle Lake and the terrific sunsets that will unfold in your view. Its one of those rare pieces that has a majority nice Level Wooded Ground on top accessible off of 392nd street, then sloping down toward Ottawa drive on the other side... The lot is bordered on both sides by a road making this lot pretty unique with a lot of possibilities.. The public access to Turtle Lake is just down the road on Ottawa Drive. Agent/Owner.

**Additional Details:**

Lot Acres	0.484
Lot Dimensions	100 x 219 x 105 x 195
School District	2170
Taxes	\$26
Taxes with Assessments	\$26
Tax Year	2025

**Additional Features:**

**Driving Directions:**

county road 17 to 392nd street to property on left side of road to start approx 100 feet after Ottawa Drive.. Green Stake on the Left and Wood Stake on Right has 8 printed on it, as in LOT 8...



Listed By:  
Smart Choice Realty

Affinity Real Estate Inc. participates in the Regional Multiple Listing Service of Minnesota, Inc Broker Reciprocity (sm) program, allowing us to display other broker's listings on our website. All properties are subject to prior sale, change or withdrawal.



**Call Affinity Real Estate**

**218-237-3333**

**info@affinityrealestate.com**



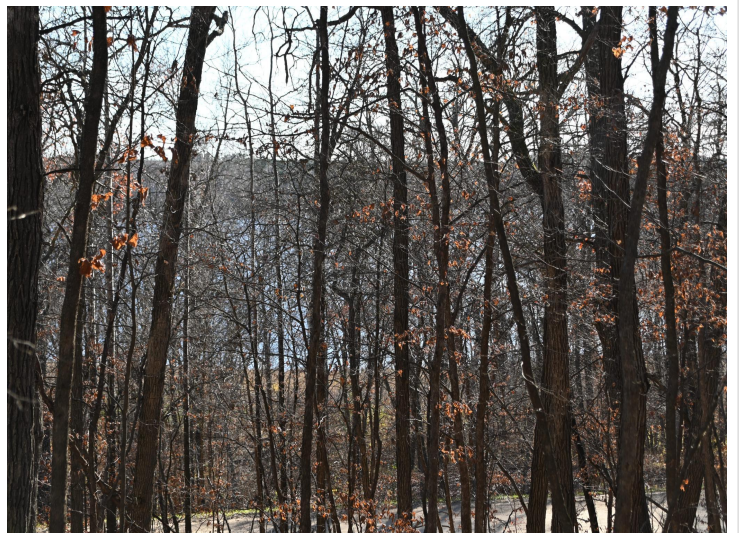
**Affinity Real Estate - 600 Park Avenue South - Park Rapids MN 56470**



website: [www.AffinityRealEstate.com](http://www.AffinityRealEstate.com) | email: [info@affinityrealestate.com](mailto:info@affinityrealestate.com) | office: 218-237-3333 | fax:218-237-3377



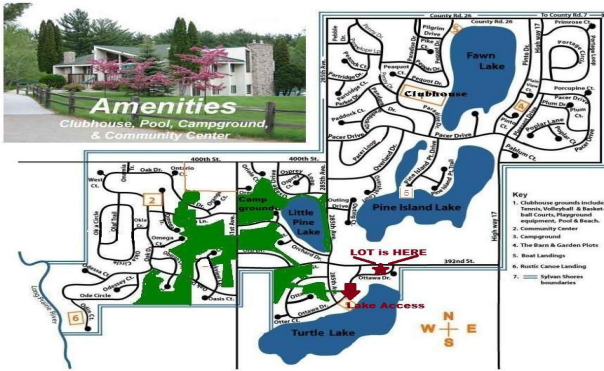
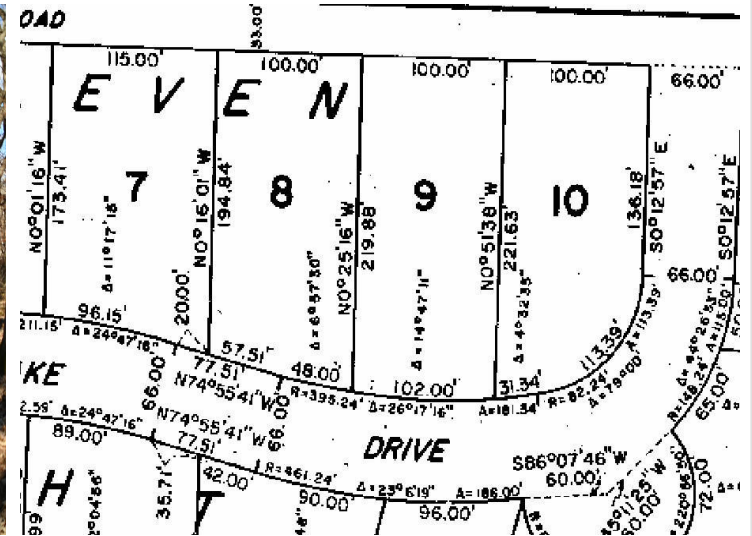
**\$8,500**  
MLS 7034470 Lake Land  
TBD 392 Street  
Browerville MN 56438



website: [www.AffinityRealEstate.com](http://www.AffinityRealEstate.com) | email: [info@affinityrealestate.com](mailto:info@affinityrealestate.com) | office: 218-237-3333 | fax:218-237-3377



**\$8,500**  
MLS 7034470 Lake Land  
TBD 392 Street  
Browerville MN 56438



website: [www.AffinityRealEstate.com](http://www.AffinityRealEstate.com) | email: [info@affinityrealestate.com](mailto:info@affinityrealestate.com) | office: 218-237-3333 | fax:218-237-3377



**\$8,500**  
 MLS 7034470 Lake Land  
 TBD 392 Street  
 Browerville MN 56438