



MLS 7034593 Land

\$79,000

10.1 Acres

Raw Land

TBD Coneflower Drive

Pine River MN 56474

Status: Active

Description:

Discover the perfect blend of privacy, nature, and possibility with this beautiful 10-acre parcel on Coneflower Drive SW in Pine River. Tucked into the peaceful Northwoods and just minutes from town, this property offers a stunning potential build site overlooking a scenic creek, creating an ideal backdrop for your future home.

Imagine waking up to the sounds of nature, enjoying wide open space, and designing the home or barndominium you've always dreamed of. The property offers a mix of mature trees and natural landscape providing both seclusion and character, while wildlife is abundant, making it a perfect setting for those who appreciate the outdoors.

Conveniently located near Pine River's shops, dining, and recreation, this acreage offers the best of quiet country living with easy access to town. Whether you're planning a year-round residence, weekend retreat, or hobby property with room to roam, the possibilities here are endless.

Must schedule a showing to walk the property

Additional Details:

Lot Acres	10.1
Lot Dimensions	1328x330x1329x331
School District	1065
Taxes	\$134
Taxes with Assessments	\$134
Tax Year	2025

Additional Features:

Driving Directions:

From CR 84 & 44, head North for 1 mile+/- . Take a right onto 18th St SW. Head East until you reach Coneflower lane SW on your right. Connect with agent for detailed access route.



Listed By:
Northland Sotheby's International Realty

Affinity Real Estate Inc. participates in the Regional Multiple Listing Service of Minnesota, Inc Broker Reciprocity (sm) program, allowing us to display other broker's listings on our website. All properties are subject to prior sale, change or withdrawal.



Call Affinity Real Estate

218-237-3333

info@affinityrealestate.com



Affinity Real Estate - 600 Park Avenue South - Park Rapids MN 56470



website: www.AffinityRealEstate.com | email: info@affinityrealestate.com | office: 218-237-3333 | fax:218-237-3377



\$79,000
MLS 7034593 Land
TBD Coneflower Drive
Pine River MN 56474



website: www.AffinityRealEstate.com | email: info@affinityrealestate.com | office: 218-237-3333 | fax:218-237-3377



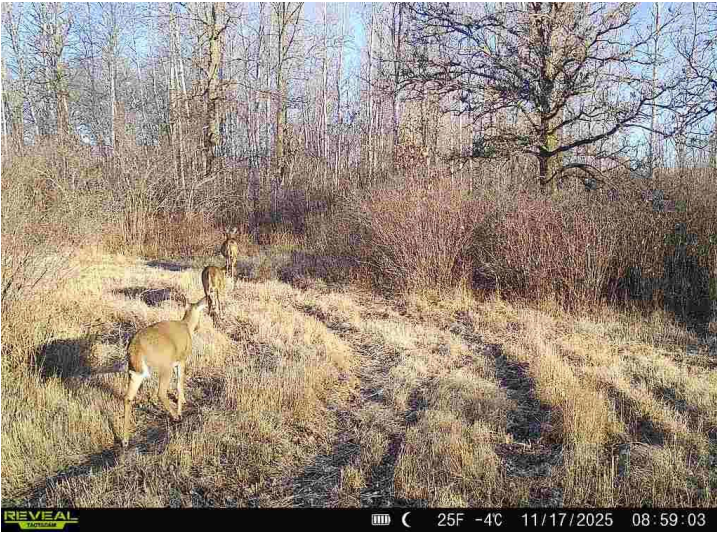
\$79,000
MLS 7034593 Land
TBD Coneflower Drive
Pine River MN 56474



website: www.AffinityRealEstate.com | email: info@affinityrealestate.com | office: 218-237-3333 | fax:218-237-3377



\$79,000
MLS 7034593 Land
TBD Coneflower Drive
Pine River MN 56474



website: www.AffinityRealEstate.com | email: info@affinityrealestate.com | office: 218-237-3333 | fax:218-237-3377



\$79,000
MLS 7034593 Land
TBD Coneflower Drive
Pine River MN 56474