



MLS 7034685 Residential

\$290,000

1,120 sq ft
2 bedrooms
1 baths

9672 Cr-1
Pine River MN 56474

Status: Active

Description:

Experience the ultimate "Up North" lifestyle! This 2-bedroom, 1-bathroom home is perfectly situated on 5 private acres, featuring a tranquil creek winding through the land. Best of all, you are steps away from the Stewart Lake Trail, offering miles of adventure right outside your door.

Property Highlights:

- The Land: 5 serene acres with a beautiful water creek.
- The Home: Cozy 2-bed, 1-bath layout with a detached 2-car garage for all your toys. Tar Driveway.
- Updated Windows/ new deck
- The Location: Just 15 minutes to Crosslake, Jenkins, Pine River, Emily, and Fifty Lakes.
- Recreation: Minutes from the world-class Whitefish Chain and countless smaller fishing lakes.

Whether you enjoy hiking, biking, fishing, or simply listening to the water, this property offers it all.

Very well maintained home!

Additional Details:

Year Built	1938
Lot Acres	5.78
Lot Dimensions	424.64'x265.77'x776.48'x825.75'
Garage Stalls	2
School District	1065
Taxes	\$730
Taxes with Assessments	\$730
Tax Year	2025

Additional Features:

Fuel: Array Heat: Forced Air



Listed By:
Edina Realty, Inc.

Take a left on or go onto County Rd 1. Continue 5 miles and it will be on the right hand side. The driveway is on the right hand side. When you turn to go to Trout Lake Camp.



Call Affinity Real Estate

218-237-3333

info@affinityrealestate.com



Affinity Real Estate - 600 Park Avenue South - Park Rapids MN 56470



website: www.AffinityRealEstate.com | email: info@affinityrealestate.com | office: 218-237-3333 | fax:218-237-3377

Affinity
REAL ESTATE INC

\$290,000
MLS 7034685 Residential
9672 Cr-1
Pine River MN 56474



website: www.AffinityRealEstate.com | email: info@affinityrealestate.com | office: 218-237-3333 | fax:218-237-3377



\$290,000
MLS 7034685 Residential
9672 Cr-1
Pine River MN 56474



website: www.AffinityRealEstate.com | email: info@affinityrealestate.com | office: 218-237-3333 | fax:218-237-3377

Affinity
REAL ESTATE INC

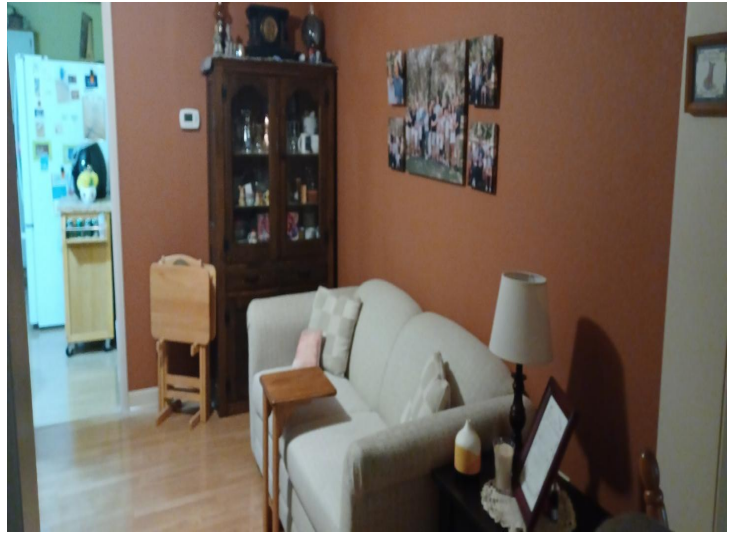
\$290,000
MLS 7034685 Residential
9672 Cr-1
Pine River MN 56474



website: www.AffinityRealEstate.com | email: info@affinityrealestate.com | office: 218-237-3333 | fax:218-237-3377

Affinity
REAL ESTATE INC

\$290,000
MLS 7034685 Residential
9672 Cr-1
Pine River MN 56474



website: www.AffinityRealEstate.com | email: info@affinityrealestate.com | office: 218-237-3333 | fax:218-237-3377



\$290,000
MLS 7034685 Residential
9672 Cr-1
Pine River MN 56474