



MLS 7034703 Lake Home

\$689,900

3,089 sq ft
4 bedrooms
2 baths

6322 Highland Scenic Road
Baxter MN 56425

Waterfront: Perch Lake (Baxter City)

Status: Active

Description:

110' Sand Lake Shoreline | 1-Acre Lot | Set on a private 1-acre lot with 110 feet of sand shoreline, this Baxter lake home offers panoramic water views, mature hardwoods, and strong indoor/outdoor living. The main level features an open floor plan with large windows, allowing for natural light and lake views throughout.

Kitchen includes granite countertops and updated lighting, flowing into the living and dining areas with access to expansive front and back decks, including a covered deck. Primary suite includes a private balcony overlooking the lake.

Upper level includes 3 bedrooms with a walk-through primary bath. Main level features a 3/4 bath, along with an additional family room and separate shower room offering potential for main-level bedroom conversion. Walkout lower level provides additional living space with flexibility for family room, fitness, or guest use. Lower-level office includes lake views and may serve as a non-conforming bedroom or bunk room. Lower level laundry area is stubbed for a future bathroom.

Features include radiant heat, hardwood floors, central vacuum, water softener, new water heater, and French doors.

Exterior amenities include a patio with fire pit area, beautiful sand beach, 110 feet of private shoreline, lake pump for irrigation, 16x18 detached garage, and separate 3-stall garage for vehicles, storage, or recreational use.

Additional Details:

Year Built	1987
Lot Acres	1.5
Lot Dimensions	416x468x113x113
Garage Stalls	4
School District	181
Taxes	\$6,821
Taxes with Assessments	\$6,846
Tax Year	2025

Listed By: **Broker Reciprocity**
 100% Full Storage Space, Walkout
 Fuel: Electric, Natural Gas
 Sewer: City
 Air Conditioning: Window
 Affinity Real Estate Inc. participates in the Regional Multiple Listing Service of Minnesota, Inc Broker Reciprocity (sm) program, allowing us to display other broker's listings on our website. All properties are subject to prior sale, change of withdrawal.
 From Baxter take 371 S. Right on Highland Scenic to property on R.



Call Affinity Real Estate

218-237-3333

info@affinityrealestate.com



Affinity Real Estate - 600 Park Avenue South - Park Rapids MN 56470



website: www.AffinityRealEstate.com | email: info@affinityrealestate.com | office: 218-237-3333 | fax:218-237-3377



\$689,900
MLS 7034703 Lake Home
6322 Highland Scenic Road
Baxter MN 56425



website: www.AffinityRealEstate.com | email: info@affinityrealestate.com | office: 218-237-3333 | fax:218-237-3377

Affinity
REAL ESTATE INC

\$689,900
MLS 7034703 Lake Home
6322 Highland Scenic Road
Baxter MN 56425



website: www.AffinityRealEstate.com | email: info@affinityrealestate.com | office: 218-237-3333 | fax:218-237-3377

Affinity
REAL ESTATE INC

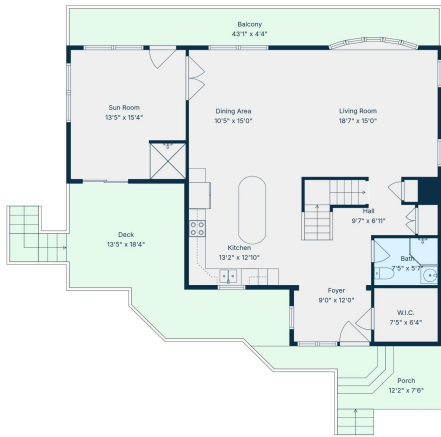
\$689,900
MLS 7034703 Lake Home
6322 Highland Scenic Road
Baxter MN 56425



website: www.AffinityRealEstate.com | email: info@affinityrealestate.com | office: 218-237-3333 | fax: 218-237-3377

Affinity
REAL ESTATE INC

\$689,900
MLS 7034703 Lake Home
6322 Highland Scenic Road
Baxter MN 56425



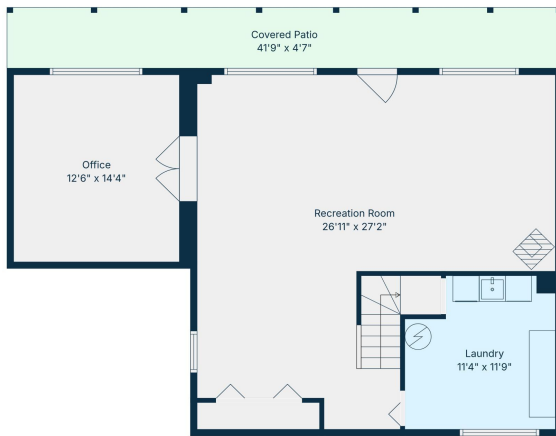
TOTAL: 2782 sq. ft.
 BELOW GRADE: 0 sq. ft. LOWER LEVEL: 806 sq. ft. MAIN GARAGE: 0 sq. ft. MAIN LEVEL: 1136 sq. ft. UPSTAIRS: 840 sq. ft.
 EXCLUDED AREAS: GARAGE: 935 sq. ft. LAUNDRY: 123 sq. ft. COVERED PATIO: 194 sq. ft.
 BALCONY: 235 sq. ft. DECK: 304 sq. ft. PORCH: 127 sq. ft.
 WALLS: 292 sq. ft.

Floor Plan Created by: CubiCasa App. Measurements Derived Highly Reliable But Not Guaranteed.



TOTAL: 2782 sq. ft.
 BELOW GRADE: 0 sq. ft. LOWER LEVEL: 806 sq. ft. MAIN GARAGE: 0 sq. ft. MAIN LEVEL: 1136 sq. ft. UPSTAIRS: 840 sq. ft.
 EXCLUDED AREAS: GARAGE: 935 sq. ft. LAUNDRY: 123 sq. ft. COVERED PATIO: 194 sq. ft.
 BALCONY: 235 sq. ft. DECK: 304 sq. ft. PORCH: 127 sq. ft.
 WALLS: 292 sq. ft.

Floor Plan Created by: CubiCasa App. Measurements Derived Highly Reliable But Not Guaranteed.



TOTAL: 2782 sq. ft.
 BELOW GRADE: 0 sq. ft. LOWER LEVEL: 806 sq. ft. MAIN GARAGE: 0 sq. ft. MAIN LEVEL: 1136 sq. ft. UPSTAIRS: 840 sq. ft.
 EXCLUDED AREAS: GARAGE: 935 sq. ft. LAUNDRY: 123 sq. ft. COVERED PATIO: 194 sq. ft.
 BALCONY: 235 sq. ft. DECK: 304 sq. ft. PORCH: 127 sq. ft.
 WALLS: 292 sq. ft.

Floor Plan Created by: CubiCasa App. Measurements Derived Highly Reliable But Not Guaranteed.



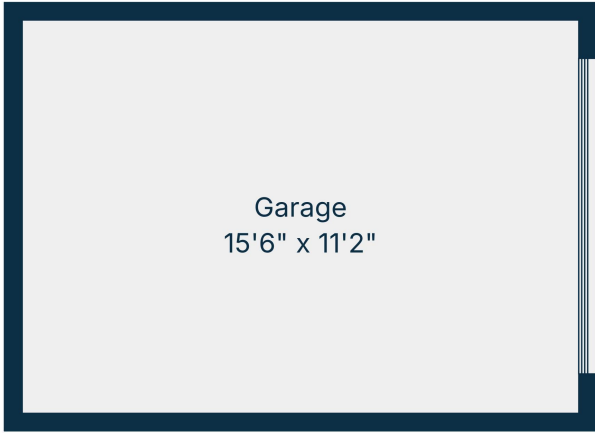
TOTAL: 2782 sq. ft.
 BELOW GRADE: 0 sq. ft. LOWER LEVEL: 806 sq. ft. MAIN GARAGE: 0 sq. ft. MAIN LEVEL: 1136 sq. ft. UPSTAIRS: 840 sq. ft.
 EXCLUDED AREAS: GARAGE: 935 sq. ft. LAUNDRY: 123 sq. ft. COVERED PATIO: 194 sq. ft.
 BALCONY: 235 sq. ft. DECK: 304 sq. ft. PORCH: 127 sq. ft.
 WALLS: 292 sq. ft.

Floor Plan Created by: CubiCasa App. Measurements Derived Highly Reliable But Not Guaranteed.

website: www.AffinityRealEstate.com | email: info@affinityrealestate.com | office: 218-237-3333 | fax: 218-237-3377



\$689,900
 MLS 7034703 Lake Home
 6322 Highland Scenic Road
 Baxter MN 56425



Garage
15'6" x 11'2"

TOTAL: 2782 sq. ft.
BELOW GRADE: 0 sq. ft. LOWER LEVEL: 806 sq. ft. MAIN GARAGE: 0 sq. ft. MAIN LEVEL: 1136 sq. ft. UPSTAIRS: 840 sq. ft.
EXCLUDED AREAS: GARAGE: 935 sq. ft. LAUNDRY: 123 sq. ft. COVERED PATIO: 194 sq. ft.
BALCONY: 235 sq. ft. DECK: 304 sq. ft. PORCH: 127 sq. ft.
WALLS: 292 sq. ft.

Floor Plan Created By: iDadLine App. Measurements Deemed Highly Reliable But Not Guaranteed.

website: www.AffinityRealEstate.com | email: info@affinityrealestate.com | office: 218-237-3333 | fax: 218-237-3377



\$689,900
MLS 7034703 Lake Home
6322 Highland Scenic Road
Baxter MN 56425