



MLS 7034924 Residential

\$339,900

2,144 sq ft
4 bedrooms
2 baths

39034 County 45
Laporte MN 56461

Status: Active

Description:

Cedar-sided home situated on a 5-acre partially wooded parcel offering a private rural setting on a paved county road between Walker and Bemidji. The property provides a nice balance of mature trees and open yard space, with a level homesite and spacious front and back yards. The home features vaulted ceilings, a main-floor primary bedroom with full bath, and an updated kitchen with stainless steel appliances. The finished basement includes a wonderful family room along with an additional finished room that would make an excellent office, hobby room, or overflow space. Recent improvements include newer central air, furnace, and gutter systems. Additional highlights include a two-stall attached garage, rear patio area, and a charming red barn-style shed for additional storage. A comfortable country setting with the convenience of paved road access and close proximity to area lakes and outdoor recreation.

Additional Details:

Year Built	1998
Lot Acres	5
Lot Dimensions	330x660
Garage Stalls	2
School District	1375
Taxes	\$1,459
Taxes with Assessments	\$1,680
Tax Year	2025

Additional Features:

Basement: Egress Window(s), Finished, Full, Wood **Fuel:** Array **Garage:** 2 **Heat:** Forced Air **Sewer:** Private Sewer, Septic System Compliant - No, Tank with Drainage Field **Water:** 4-Inch Submersible **Air Conditioning:** Central Air

Driving Directions:

From Walker, Hwy 371 N to Hwy 200 to County Rd 45, follow 45 to property.



Listed By:
Cedar Point Realty

Affinity Real Estate Inc. participates in the Regional Multiple Listing Service of Minnesota, Inc Broker Reciprocity (sm) program, allowing us to display other broker's listings on our website. All properties are subject to prior sale, change or withdrawal.



Call Affinity Real Estate

218-237-3333

info@affinityrealestate.com



Affinity Real Estate - 600 Park Avenue South - Park Rapids MN 56470



website: www.AffinityRealEstate.com | email: info@affinityrealestate.com | office: 218-237-3333 | fax: 218-237-3377



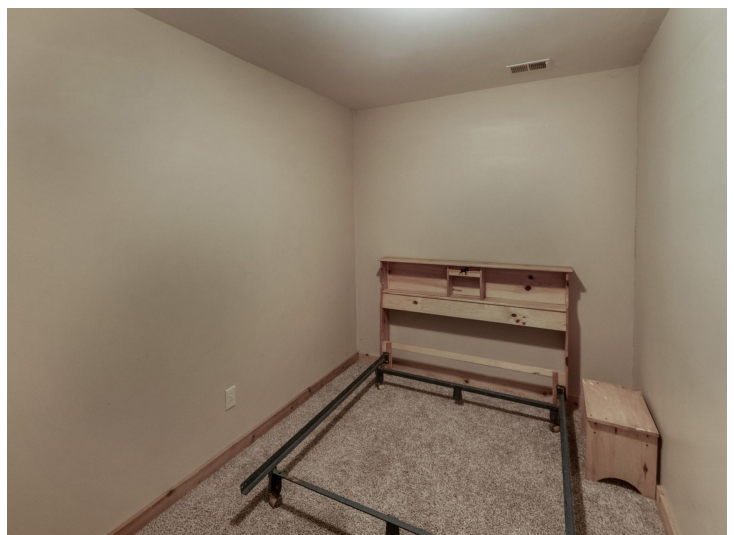
\$339,900
MLS 7034924 Residential
39034 County 45
Laporte MN 56461



website: www.AffinityRealEstate.com | email: info@affinityrealestate.com | office: 218-237-3333 | fax:218-237-3377

Affinity
REAL ESTATE INC

\$339,900
MLS 7034924 Residential
39034 County 45
Laporte MN 56461



website: www.AffinityRealEstate.com | email: info@affinityrealestate.com | office: 218-237-3333 | fax:218-237-3377

Affinity
REAL ESTATE INC

\$339,900
MLS 7034924 Residential
39034 County 45
Laporte MN 56461



website: www.AffinityRealEstate.com | email: info@affinityrealestate.com | office: 218-237-3333 | fax:218-237-3377



\$339,900
MLS 7034924 Residential
39034 County 45
Laporte MN 56461



website: www.AffinityRealEstate.com | email: info@affinityrealestate.com | office: 218-237-3333 | fax:218-237-3377



\$339,900
MLS 7034924 Residential
39034 County 45
Laporte MN 56461



website: www.AffinityRealEstate.com | email: info@affinityrealestate.com | office: 218-237-3333 | fax:218-237-3377



\$339,900
MLS 7034924 Residential
39034 County 45
Laporte MN 56461