



MLS 7034926 Land

**\$214,900**

74.34 Acres  
Raw Land

9815 County 8  
Federal Dam MN 56641

Status: Active

**Description:**

Escape to nearly 75 acres of beautiful, untouched land offering privacy, space, and endless potential. Conveniently located with easy access to a main road and situated alongside the gently winding Boy River, this property offers a peaceful setting surrounded by nature.

The land features a perfect mix of woods and open grassland, creating an ideal environment for wildlife and making it a great property for hunting, recreation, or building your dream country home. Whether you're looking for a private retreat, hunting land, or a future homesite, this acreage offers plenty of possibilities.

Enjoy the serenity of rural living while still being within close proximity to beautiful Leech Lake, known for its fishing, boating, and outdoor recreation.

With nearly 75 acres to explore, this property is ready for you to create your own piece of northern Minnesota paradise.

**Additional Details:**

Lot Acres	74.34
Lot Dimensions	1600x2435x1746x1704
School District	734
Taxes	\$312
Taxes with Assessments	\$312
Tax Year	2025

**Additional Features:**

**Driving Directions:**

GPS can be inaccurate. Seller provided: .5 miles north of Black Duck Point Drive. .3 miles south of the bridge over Boy River. and 8.2 miles N of Hwy 200.



Listed By:  
Coldwell Banker Realty

Affinity Real Estate Inc. participates in the Regional Multiple Listing Service of Minnesota, Inc Broker Reciprocity (sm) program, allowing us to display other broker's listings on our website. All properties are subject to prior sale, change or withdrawal.



**Call Affinity Real Estate**

**218-237-3333**

**info@affinityrealestate.com**



**Affinity Real Estate - 600 Park Avenue South - Park Rapids MN 56470**



website: [www.AffinityRealEstate.com](http://www.AffinityRealEstate.com) | email: [info@affinityrealestate.com](mailto:info@affinityrealestate.com) | office: 218-237-3333 | fax:218-237-3377



**\$214,900**  
MLS 7034926 Land  
9815 County 8  
Federal Dam MN 56641



website: [www.AffinityRealEstate.com](http://www.AffinityRealEstate.com) | email: [info@affinityrealestate.com](mailto:info@affinityrealestate.com) | office: 218-237-3333 | fax:218-237-3377



**\$214,900**  
MLS 7034926 Land  
9815 County 8  
Federal Dam MN 56641



website: [www.AffinityRealEstate.com](http://www.AffinityRealEstate.com) | email: [info@affinityrealestate.com](mailto:info@affinityrealestate.com) | office: 218-237-3333 | fax:218-237-3377



**\$214,900**  
MLS 7034926 Land  
9815 County 8  
Federal Dam MN 56641



website: [www.AffinityRealEstate.com](http://www.AffinityRealEstate.com) | email: [info@affinityrealestate.com](mailto:info@affinityrealestate.com) | office: 218-237-3333 | fax:218-237-3377



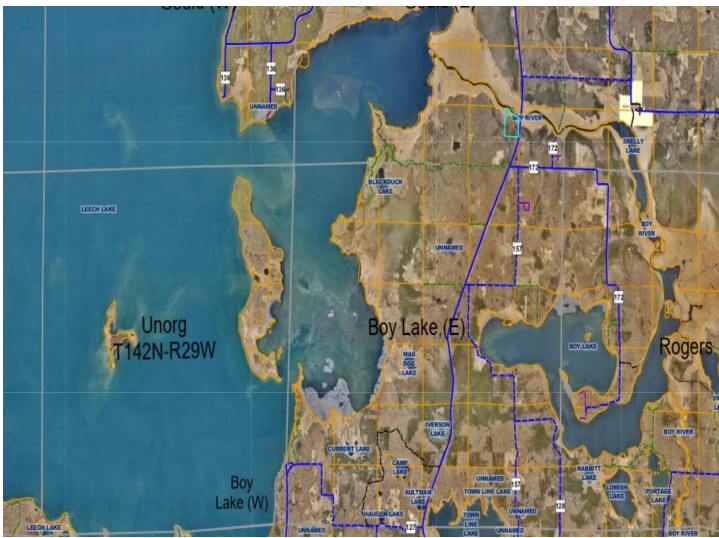
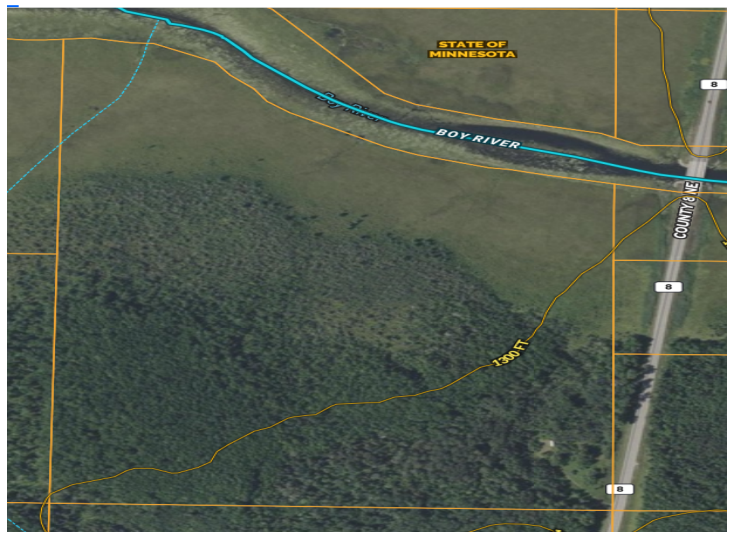
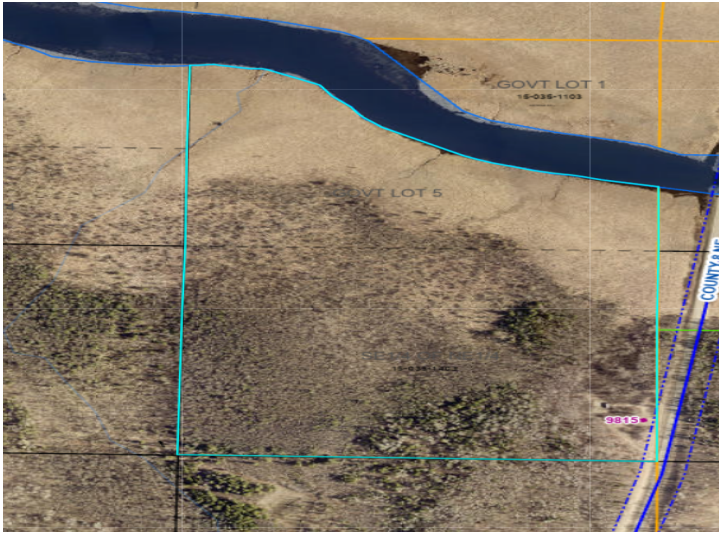
**\$214,900**  
MLS 7034926 Land  
9815 County 8  
Federal Dam MN 56641



website: [www.AffinityRealEstate.com](http://www.AffinityRealEstate.com) | email: [info@affinityrealestate.com](mailto:info@affinityrealestate.com) | office: 218-237-3333 | fax:218-237-3377



**\$214,900**  
MLS 7034926 Land  
9815 County 8  
Federal Dam MN 56641



website: [www.AffinityRealEstate.com](http://www.AffinityRealEstate.com) | email: [info@affinityrealestate.com](mailto:info@affinityrealestate.com) | office: 218-237-3333 | fax:218-237-3377



**\$214,900**  
 MLS 7034926 Land  
 9815 County 8  
 Federal Dam MN 56641