



MLS 7034929 Residential

**\$540,000**

2,032 sq ft  
3 bedrooms  
2 baths

16418 Park Estates Drive  
Brainerd MN 56401

Status: Active

**Description:**

Welcome to maintenance free living on beautiful Clearwater Lake. This well-maintained 3 bedroom, 2 bathroom home includes a versatile flex room suitable for office, hobby room or additional bunk room. Located in the desirable Park Estates community on Clearwater Lake this home features upgraded kitchen amenities, vaulted ceiling and modern finishes with tile and natural woodwork throughout. With a seamless flow into spacious living areas this home is ideal for both everyday living or weekend getaways. The expansive unfinished lower level offers excellent potential for future equity, with space to add an additional bedroom, family room and bathroom. Enjoy association access to 9.5 manicured acres and 465 feet on beautiful Clearwater Lake, along with, shared garden area and hiking trails. The lakeside community room with nearby restrooms available for gatherings of family and friends. This townhome includes a deeded boat slip, A wonderful opportunity to enjoy comfort, space, and lake access in a prime location.

**Additional Details:**


Year Built	2006
Lot Acres	0.06
Lot Dimensions	Irregular
Garage Stalls	2
School District	896
Taxes	\$2,677
Taxes with Assessments	\$2,702
Tax Year	2026

**Additional Features:**

**Basement:** Block **Fuel:** Array **Garage:** 2 **Heat:** Forced Air **Sewer:** Septic System Compliant - Yes, Shared Septic **Water:** Drilled **Air Conditioning:** Central Air

**Driving Directions:**

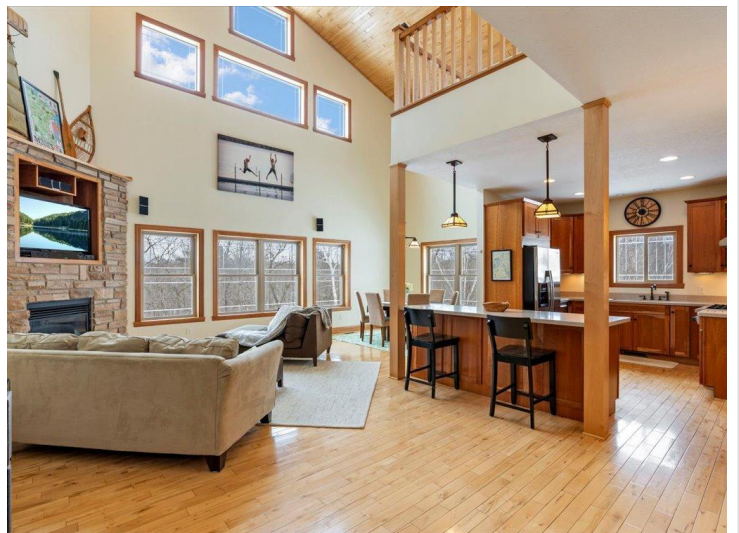
From Brainerd take Hwy 18 east to north Nokay Lake road (CR 8) for approximately 5 miles to right on Park Estates Drive

 Listed By:  
Edina Realty, Inc.

Affinity Real Estate Inc. participates in the Regional Multiple Listing Service of Minnesota, Inc Broker Reciprocity (sm) program, allowing us to display other broker's listings on our website. All properties are subject to prior sale, change or withdrawal.

 **Call Affinity Real Estate**  
**218-237-3333**  
**info@affinityrealestate.com**

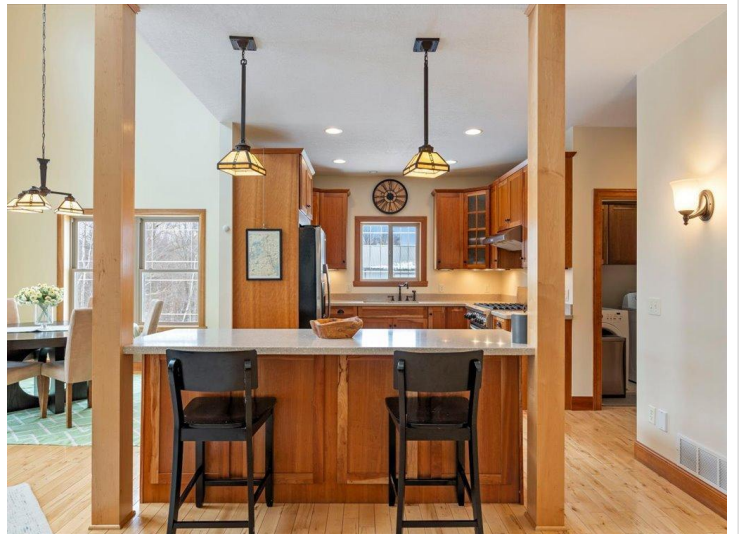
Affinity Real Estate - 600 Park Avenue South - Park Rapids MN 56470



website: [www.AffinityRealEstate.com](http://www.AffinityRealEstate.com) | email: [info@affinityrealestate.com](mailto:info@affinityrealestate.com) | office: 218-237-3333 | fax:218-237-3377

**Affinity**  
REAL ESTATE INC

**\$540,000**  
MLS 7034929 Residential  
16418 Park Estates Drive  
Brainerd MN 56401



website: [www.AffinityRealEstate.com](http://www.AffinityRealEstate.com) | email: [info@affinityrealestate.com](mailto:info@affinityrealestate.com) | office: 218-237-3333 | fax: 218-237-3377

**Affinity**  
REAL ESTATE INC

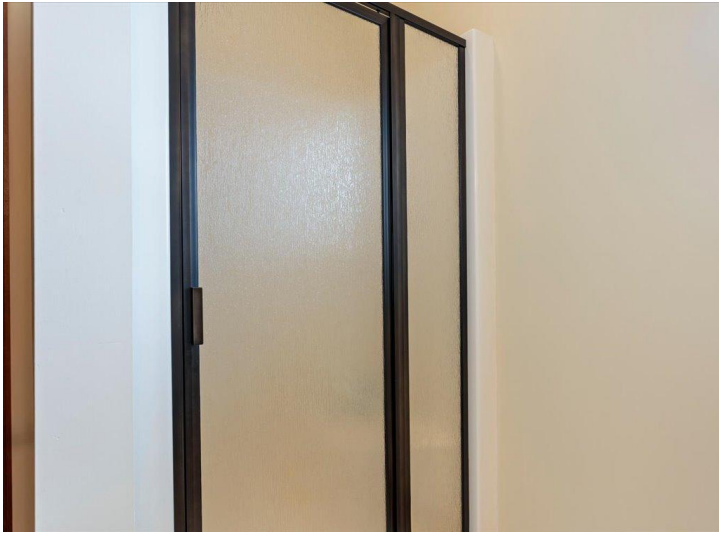
**\$540,000**  
MLS 7034929 Residential  
16418 Park Estates Drive  
Brainerd MN 56401



website: [www.AffinityRealEstate.com](http://www.AffinityRealEstate.com) | email: [info@affinityrealestate.com](mailto:info@affinityrealestate.com) | office: 218-237-3333 | fax:218-237-3377

**Affinity**  
REAL ESTATE INC

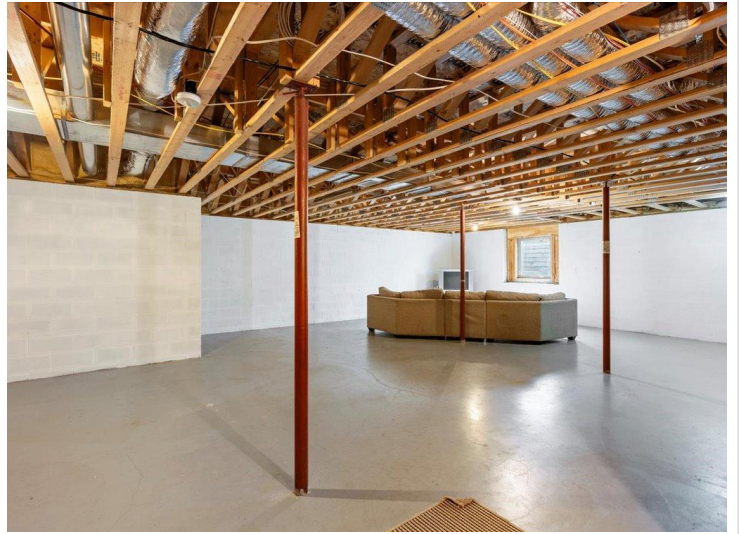
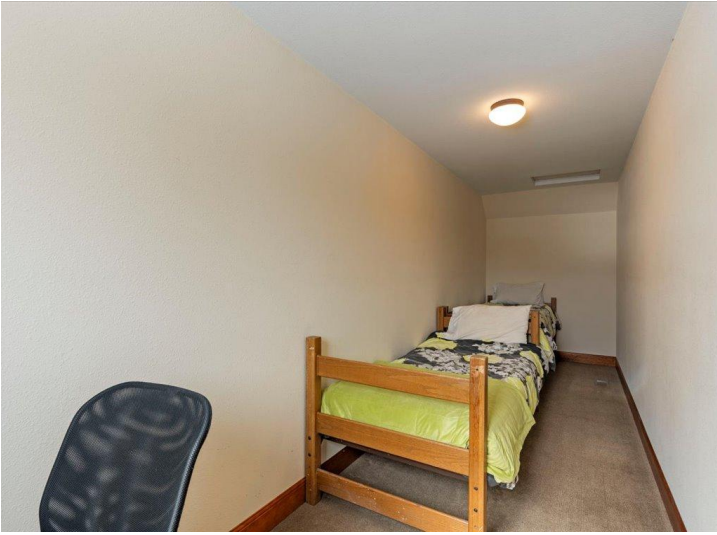
**\$540,000**  
MLS 7034929 Residential  
16418 Park Estates Drive  
Brainerd MN 56401



website: [www.AffinityRealEstate.com](http://www.AffinityRealEstate.com) | email: [info@affinityrealestate.com](mailto:info@affinityrealestate.com) | office: 218-237-3333 | fax:218-237-3377



**\$540,000**  
MLS 7034929 Residential  
16418 Park Estates Drive  
Brainerd MN 56401



website: [www.AffinityRealEstate.com](http://www.AffinityRealEstate.com) | email: [info@affinityrealestate.com](mailto:info@affinityrealestate.com) | office: 218-237-3333 | fax: 218-237-3377

**Affinity**  
REAL ESTATE INC

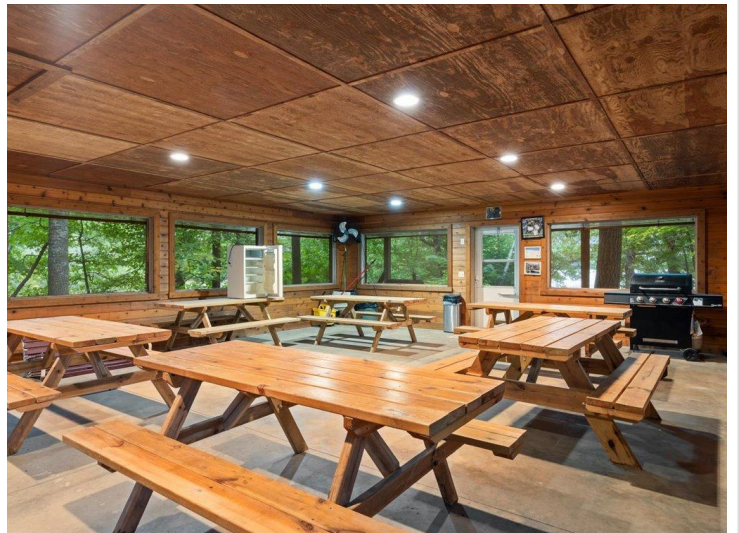
**\$540,000**  
MLS 7034929 Residential  
16418 Park Estates Drive  
Brainerd MN 56401



website: [www.AffinityRealEstate.com](http://www.AffinityRealEstate.com) | email: [info@affinityrealestate.com](mailto:info@affinityrealestate.com) | office: 218-237-3333 | fax:218-237-3377



**\$540,000**  
MLS 7034929 Residential  
16418 Park Estates Drive  
Brainerd MN 56401



website: [www.AffinityRealEstate.com](http://www.AffinityRealEstate.com) | email: [info@affinityrealestate.com](mailto:info@affinityrealestate.com) | office: 218-237-3333 | fax:218-237-3377



**\$540,000**  
MLS 7034929 Residential  
16418 Park Estates Drive  
Brainerd MN 56401