



MLS 7034930 Land

**\$118,900**

3.77 Acres  
Raw Land

TBD SW County 32  
Motley MN 56466

Status: Active

**Description:**

Nestled along the Crow Wing River in Cass County, this scenic 3.77-acre property offers a perfect mix of open land and wooded privacy. Whether you're dreaming of building a home or simply want a retreat for recreation and relaxation, this spot near Motley could be just what you're looking for. The front portion features a spacious clearing ideal for future construction, gradually giving way to a peaceful stretch of mature trees leading down to the riverbank. With roughly 157 feet of river frontage, you can enjoy kayaking, floating, or fishing while taking in the tranquil beauty of the flowing water and surrounding nature.

**Additional Details:**

Lot Acres	3.77
Lot Dimensions	159x1031x159x1026
School District	1062
Taxes	\$302
Taxes with Assessments	\$302
Tax Year	2025

**Additional Features:**

**Driving Directions:**

FROM MOTLEY, HEAD NORTH ON US-10 W, TURN RIGHT ONTO MN-210 E, TURN MN-64 N, TURN LEFT ONTO 120TH ST SW, TURN RIGHT ONTO COUNTY 32 SW, PROPERTY WILL BE ON LEFT-HAND SIDE.



Listed By:  
Timber Ghost Realty, LLC

Affinity Real Estate Inc. participates in the Regional Multiple Listing Service of Minnesota, Inc Broker Reciprocity (sm) program, allowing us to display other broker's listings on our website. All properties are subject to prior sale, change or withdrawal.



**Call Affinity Real Estate**

**218-237-3333**

**info@affinityrealestate.com**



**Affinity Real Estate - 600 Park Avenue South - Park Rapids MN 56470**



website: [www.AffinityRealEstate.com](http://www.AffinityRealEstate.com) | email: [info@affinityrealestate.com](mailto:info@affinityrealestate.com) | office: 218-237-3333 | fax:218-237-3377



**\$118,900**  
MLS 7034930 Land  
TBD SW County 32  
Motley MN 56466



website: [www.AffinityRealEstate.com](http://www.AffinityRealEstate.com) | email: [info@affinityrealestate.com](mailto:info@affinityrealestate.com) | office: 218-237-3333 | fax: 218-237-3377



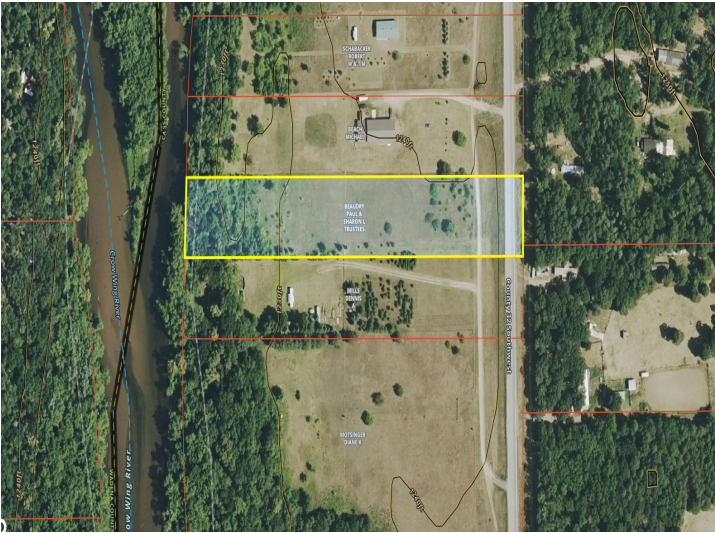
**\$118,900**  
MLS 7034930 Land  
TBD SW County 32  
Motley MN 56466



website: [www.AffinityRealEstate.com](http://www.AffinityRealEstate.com) | email: [info@affinityrealestate.com](mailto:info@affinityrealestate.com) | office: 218-237-3333 | fax:218-237-3377



**\$118,900**  
MLS 7034930 Land  
TBD SW County 32  
Motley MN 56466



website: [www.AffinityRealEstate.com](http://www.AffinityRealEstate.com) | email: [info@affinityrealestate.com](mailto:info@affinityrealestate.com) | office: 218-237-3333 | fax:218-237-3377



**\$118,900**  
MLS 7034930 Land  
TBD SW County 32  
Motley MN 56466