



MLS 7035275 Commercial

\$6,000,000

1240 Randolph Road
Detroit Lakes MN 56501

Status: Active

Description:

Seller may carry and is open to creative finance and terms. Here is your chance to own a PRIME piece of real estate just off Highway 10 in Detroit Lakes! This listing is for 3 parcels totaling over 80 acres! This site offers excellent potential for commercial, multi-family, mixed-use or other development opportunities that support the continued growth of Detroit Lakes. The center parcel contains 10 buildings with a total of approx 47,000 sq ft of space. The northern parcel is approx 50 acres of development property within city limits. Located directly off of Randolph Rd and Highland Dr you will have amazing accessibility and visibility. City water, sewer, and natural gas are available on site. As you know, large, contiguous development opportunities like this are rarely available in Detroit Lakes. Do not wait on this one. Schedule your showing today!

Additional Details:

Year Built	1976
Lot Acres	75.06
Lot Dimensions	80 acres
School District	1074
Taxes	\$23,500
Taxes with Assessments	\$23,500
Tax Year	2025

Additional Features:

Fuel: Array **Heat:** Other **Sewer:** City Sewer - In Street **Water:** City Water - In Street

Driving Directions:

Randolph Road to properties



Listed By:
eXp Realty

Affinity Real Estate Inc. participates in the Regional Multiple Listing Service of Minnesota, Inc Broker Reciprocity (sm) program, allowing us to display other broker's listings on our website. All properties are subject to prior sale, change or withdrawal.



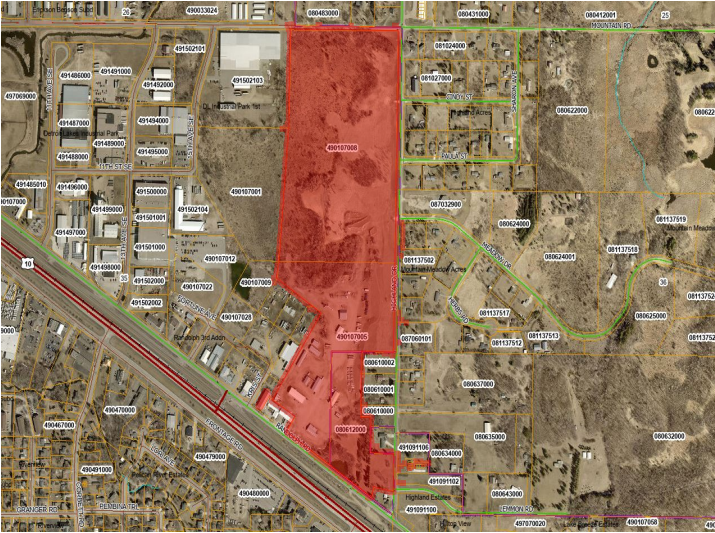
Call Affinity Real Estate

218-237-3333

info@affinityrealestate.com



Affinity Real Estate - 600 Park Avenue South - Park Rapids MN 56470



website: www.AffinityRealEstate.com | email: info@affinityrealestate.com | office: 218-237-3333 | fax: 218-237-3377

Affinity
REAL ESTATE INC

\$6,000,000
MLS 7035275 Commercial
1240 Randolph Road
Detroit Lakes MN 56501



website: www.AffinityRealEstate.com | email: info@affinityrealestate.com | office: 218-237-3333 | fax:218-237-3377



\$6,000,000
MLS 7035275 Commercial
1240 Randolph Road
Detroit Lakes MN 56501



website: www.AffinityRealEstate.com | email: info@affinityrealestate.com | office: 218-237-3333 | fax: 218-237-3377

Affinity
REAL ESTATE INC

\$6,000,000
MLS 7035275 Commercial
1240 Randolph Road
Detroit Lakes MN 56501



website: www.AffinityRealEstate.com | email: info@affinityrealestate.com | office: 218-237-3333 | fax:218-237-3377



\$6,000,000
MLS 7035275 Commercial
1240 Randolph Road
Detroit Lakes MN 56501



website: www.AffinityRealEstate.com | email: info@affinityrealestate.com | office: 218-237-3333 | fax: 218-237-3377

Affinity
REAL ESTATE INC

\$6,000,000
MLS 7035275 Commercial
1240 Randolph Road
Detroit Lakes MN 56501



website: www.AffinityRealEstate.com | email: info@affinityrealestate.com | office: 218-237-3333 | fax:218-237-3377



\$6,000,000
MLS 7035275 Commercial
1240 Randolph Road
Detroit Lakes MN 56501



website: www.AffinityRealEstate.com | email: info@affinityrealestate.com | office: 218-237-3333 | fax: 218-237-3377

Affinity
REAL ESTATE INC

\$6,000,000
MLS 7035275 Commercial
1240 Randolph Road
Detroit Lakes MN 56501



website: www.AffinityRealEstate.com | email: info@affinityrealestate.com | office: 218-237-3333 | fax:218-237-3377



\$6,000,000
MLS 7035275 Commercial
1240 Randolph Road
Detroit Lakes MN 56501