



MLS 7035595 Residential

**\$374,800**

2,371 sq ft  
3 bedrooms  
2 baths

46524 255th Avenue  
Laporte MN 56461

Status: Active

**Description:**

Privacy, space, and updates! This 3 bed, 2 bath home sits on 14.09 acres offering the peace and seclusion everyone is looking for. The property features a hard to find 6-stalls of garage space, perfect for vehicles, toys, or a workshop. Inside you'll find numerous updates that make the home move-in ready while still offering room to make it your own. Enjoy the wide-open space, mature surroundings, and the privacy that comes with acreage living all while having plenty of storage and functionality. A great opportunity for those looking for country living with room to grow.

**Additional Details:**

Year Built	1982
Lot Acres	14.09
Lot Dimensions	640x1300
Garage Stalls	6
School District	31
Taxes	\$2,614
Taxes with Assessments	\$2,128
Tax Year	2026

**Additional Features:**

**Basement:** Block **Fuel:** Propane **Garage:** 6 **Heat:** Forced Air **Sewer:** Mound Septic **Water:** Well **Air Conditioning:** Central Air

**Driving Directions:**

Head south on Hwy 71 from Bemidji. Turn left on 470th. Turn rt on 255th. Property on left.



Listed By:  
218 Real Estate

Affinity Real Estate Inc. participates in the Regional Multiple Listing Service of Minnesota, Inc Broker Reciprocity (sm) program, allowing us to display other broker's listings on our website. All properties are subject to prior sale, change or withdrawal.



**Call Affinity Real Estate**

**218-237-3333**

**info@affinityrealestate.com**



**Affinity Real Estate - 600 Park Avenue South - Park Rapids MN 56470**



website: [www.AffinityRealEstate.com](http://www.AffinityRealEstate.com) | email: [info@affinityrealestate.com](mailto:info@affinityrealestate.com) | office: 218-237-3333 | fax:218-237-3377

**Affinity**  
REAL ESTATE INC

**\$374,800**  
MLS 7035595 Residential  
46524 255th Avenue  
Laporte MN 56461



website: [www.AffinityRealEstate.com](http://www.AffinityRealEstate.com) | email: [info@affinityrealestate.com](mailto:info@affinityrealestate.com) | office: 218-237-3333 | fax:218-237-3377



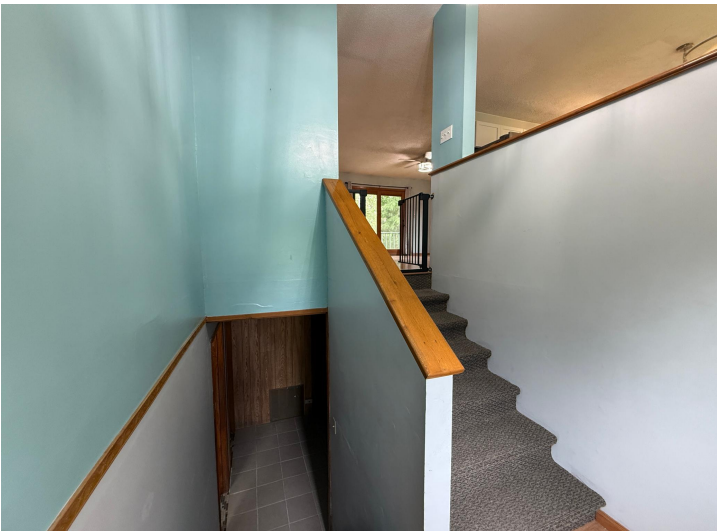
**\$374,800**  
MLS 7035595 Residential  
46524 255th Avenue  
Laporte MN 56461



website: [www.AffinityRealEstate.com](http://www.AffinityRealEstate.com) | email: [info@affinityrealestate.com](mailto:info@affinityrealestate.com) | office: 218-237-3333 | fax:218-237-3377



**\$374,800**  
MLS 7035595 Residential  
46524 255th Avenue  
Laporte MN 56461



website: [www.AffinityRealEstate.com](http://www.AffinityRealEstate.com) | email: [info@affinityrealestate.com](mailto:info@affinityrealestate.com) | office: 218-237-3333 | fax:218-237-3377

**Affinity**  
REAL ESTATE INC

**\$374,800**  
MLS 7035595 Residential  
46524 255th Avenue  
Laporte MN 56461



website: [www.AffinityRealEstate.com](http://www.AffinityRealEstate.com) | email: [info@affinityrealestate.com](mailto:info@affinityrealestate.com) | office: 218-237-3333 | fax:218-237-3377



**\$374,800**  
MLS 7035595 Residential  
46524 255th Avenue  
Laporte MN 56461



website: [www.AffinityRealEstate.com](http://www.AffinityRealEstate.com) | email: [info@affinityrealestate.com](mailto:info@affinityrealestate.com) | office: 218-237-3333 | fax: 218-237-3377



**\$374,800**  
MLS 7035595 Residential  
46524 255th Avenue  
Laporte MN 56461



website: [www.AffinityRealEstate.com](http://www.AffinityRealEstate.com) | email: [info@affinityrealestate.com](mailto:info@affinityrealestate.com) | office: 218-237-3333 | fax:218-237-3377

**Affinity**  
REAL ESTATE INC

**\$374,800**  
MLS 7035595 Residential  
46524 255th Avenue  
Laporte MN 56461



website: [www.AffinityRealEstate.com](http://www.AffinityRealEstate.com) | email: [info@affinityrealestate.com](mailto:info@affinityrealestate.com) | office: 218-237-3333 | fax:218-237-3377



**\$374,800**  
MLS 7035595 Residential  
46524 255th Avenue  
Laporte MN 56461



website: [www.AffinityRealEstate.com](http://www.AffinityRealEstate.com) | email: [info@affinityrealestate.com](mailto:info@affinityrealestate.com) | office: 218-237-3333 | fax:218-237-3377



**\$374,800**  
MLS 7035595 Residential  
46524 255th Avenue  
Laporte MN 56461