



MLS 7035772 Residential

\$259,900

1,660 sq ft
2 bedrooms
2 baths

15273 Clearview Lane
Brainerd MN 56401

Status: Active

Description:

Step into this beautifully maintained townhome with elegant simplicity. Comfortable bi level living, 2 private bedrooms with walk in closets. Private deck, perfect for morning coffee or evening relaxation. Great Brainerd location, next to all shopping and schools. Enjoy the scenic walking trails nestled in this quiet and welcoming neighborhood. This home offers the perfect balance of warmth, functionality and convenience.

Additional Details:

Year Built	2007
Lot Acres	0.8
Lot Dimensions	235x140x140x300
Garage Stalls	2
School District	896
Taxes	\$2,318
Taxes with Assessments	\$2,318
Tax Year	2025

Additional Features:

Fuel: Array Heat: Forced Air

Driving Directions:

Hwy 210 east to left on Riverside Drive (Walgreen/NW 4th Street) to a left on Beaver Dam Road, to right on Northtown Street, to left on Clearview Lane.



Listed By:
LPT Realty, LLC.

Affinity Real Estate Inc. participates in the Regional Multiple Listing Service of Minnesota, Inc Broker Reciprocity (sm) program, allowing us to display other broker's listings on our website. All properties are subject to prior sale, change or withdrawal.



Call Affinity Real Estate

218-237-3333

info@affinityrealestate.com



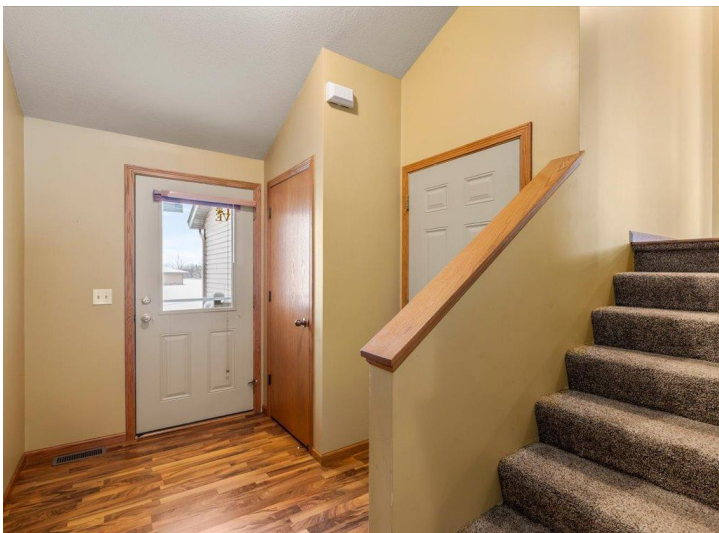
Affinity Real Estate - 600 Park Avenue South - Park Rapids MN 56470



website: www.AffinityRealEstate.com | email: info@affinityrealestate.com | office: 218-237-3333 | fax:218-237-3377



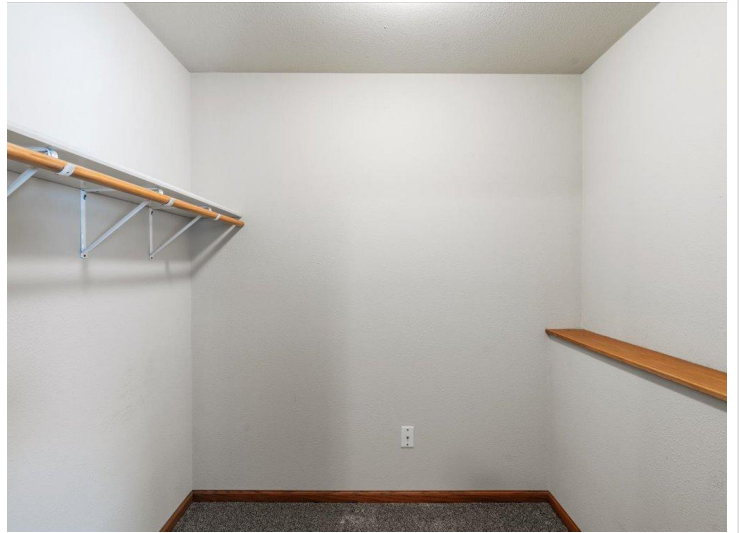
\$259,900
MLS 7035772 Residential
15273 Clearview Lane
Brainerd MN 56401



website: www.AffinityRealEstate.com | email: info@affinityrealestate.com | office: 218-237-3333 | fax:218-237-3377

Affinity
REAL ESTATE INC

\$259,900
MLS 7035772 Residential
15273 Clearview Lane
Brainerd MN 56401



website: www.AffinityRealEstate.com | email: info@affinityrealestate.com | office: 218-237-3333 | fax:218-237-3377



\$259,900
MLS 7035772 Residential
15273 Clearview Lane
Brainerd MN 56401



website: www.AffinityRealEstate.com | email: info@affinityrealestate.com | office: 218-237-3333 | fax:218-237-3377



\$259,900
MLS 7035772 Residential
15273 Clearview Lane
Brainerd MN 56401



website: www.AffinityRealEstate.com | email: info@affinityrealestate.com | office: 218-237-3333 | fax:218-237-3377



\$259,900
MLS 7035772 Residential
15273 Clearview Lane
Brainerd MN 56401