



MLS 7035905 Land

**\$89,900**

8.84 Acres  
Raw Land

TBD Seaberg Lane  
Bagley MN 56621

Status: Active

**Description:**

Extremely rare Northern MN property! Prime wooded 8.84 acres right next to pristine Long Lost Lake and the public access. This property has been owned by the same family for 60+ years, where they camped and shared years of enjoyment! There is electricity on-site along with a horseshoe driveway. Long Lost Lake is well known for its pristine water clarity, great fishing, and tranquil environment without all the boat and jet ski noise due to having a 10 mph speed limit on the lake. Acreage is heavily wooded with some breathtaking terrain and thick stands of pine amongst a mixture of hardwoods...there was no evidence of any logging at all, so it is a mature stand of trees! Besides being right next to the public access, it is directly connected to 100s of acres of public land and also very close to Glanders Lake! This is in the heart of the "Buckboards" (a/k/a White Earth State Forest), which offers 1000s of acres of remote public land with miles of trails and several lakes, plus Itasca Park is just down the road!

**Additional Details:**

|                        |          |
|------------------------|----------|
| Lot Acres              | 8.84     |
| Lot Dimensions         | 276x1395 |
| School District        | 853      |
| Taxes                  | \$162    |
| Taxes with Assessments | \$162    |
| Tax Year               | 2025     |

**Additional Features:**

**Driving Directions:**

From Bagley, south on #92 for 16.25 miles, right on CR #39 and go for 7.5 miles, right on Seaberg Lane and go approx. 1.75 miles, and the property will be on the right (right before the public access to Long Lost Lake).



Listed By:  
Realty Experts, LLC

Affinity Real Estate Inc. participates in the Regional Multiple Listing Service of Minnesota, Inc Broker Reciprocity (sm) program, allowing us to display other broker's listings on our website. All properties are subject to prior sale, change or withdrawal.



**Call Affinity Real Estate**

**218-237-3333**

**info@affinityrealestate.com**



**Affinity Real Estate - 600 Park Avenue South - Park Rapids MN 56470**



website: [www.AffinityRealEstate.com](http://www.AffinityRealEstate.com) | email: [info@affinityrealestate.com](mailto:info@affinityrealestate.com) | office: 218-237-3333 | fax:218-237-3377



**\$89,900**  
MLS 7035905 Land  
TBD Seaberg Lane  
Bagley MN 56621



website: [www.AffinityRealEstate.com](http://www.AffinityRealEstate.com) | email: [info@affinityrealestate.com](mailto:info@affinityrealestate.com) | office: 218-237-3333 | fax: 218-237-3377

**Affinity**  
REAL ESTATE INC

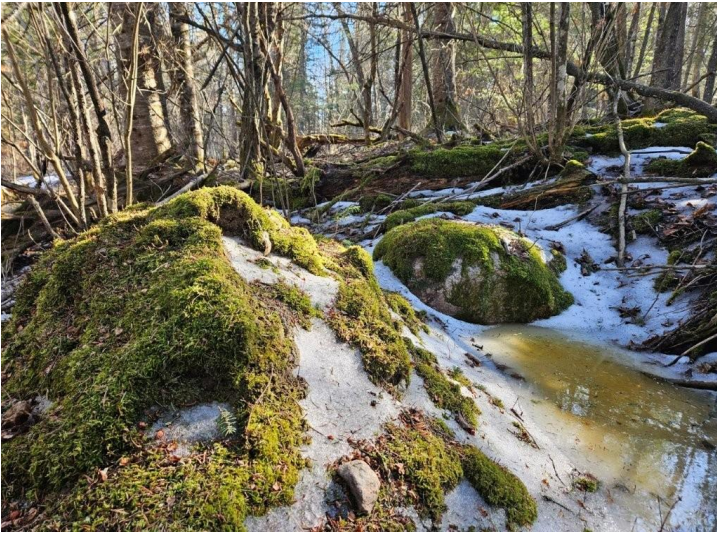
**\$89,900**  
MLS 7035905 Land  
TBD Seaberg Lane  
Bagley MN 56621



website: [www.AffinityRealEstate.com](http://www.AffinityRealEstate.com) | email: [info@affinityrealestate.com](mailto:info@affinityrealestate.com) | office: 218-237-3333 | fax:218-237-3377

**Affinity**  
REAL ESTATE INC

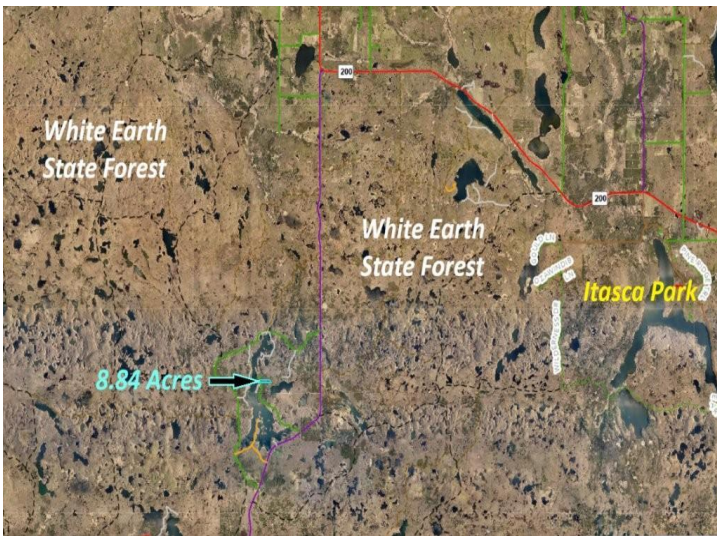
**\$89,900**  
MLS 7035905 Land  
TBD Seaberg Lane  
Bagley MN 56621



website: [www.AffinityRealEstate.com](http://www.AffinityRealEstate.com) | email: [info@affinityrealestate.com](mailto:info@affinityrealestate.com) | office: 218-237-3333 | fax:218-237-3377



**\$89,900**  
MLS 7035905 Land  
TBD Seaberg Lane  
Bagley MN 56621



website: [www.AffinityRealEstate.com](http://www.AffinityRealEstate.com) | email: [info@affinityrealestate.com](mailto:info@affinityrealestate.com) | office: 218-237-3333 | fax:218-237-3377



**\$89,900**  
MLS 7035905 Land  
TBD Seaberg Lane  
Bagley MN 56621