



MLS 7036333 Residential

**\$307,000**

1,753 sq ft  
3 bedrooms  
2 baths

4240 Irvine Avenue  
Bemidji MN 56601

Status: Active

**Description:**

This lovely single-level home features three bedrooms and two bathrooms. It includes a heated garage, a spacious kitchen, and a laundry room. The primary suite has a step-in tile shower, a vanity with double sinks, and a walk-in closet. The association takes care of snow removal for the roads and driveways in the winter, as well as lawn care in the summer.

**Additional Details:**

Year Built	2007
Lot Acres	0.21
Lot Dimensions	85x85x94x119
Garage Stalls	2
School District	1386
Taxes	\$3,493
Taxes with Assessments	\$3,493
Tax Year	2025

**Additional Features:**

**Basement:** None **Fuel:** Array **Garage:** 2 **Heat:** Forced Air, Fireplace(s), In-Floor Heating **Sewer:** City Sewer/Connected **Water:** City Water/Connected **Air Conditioning:** Central Air

**Driving Directions:**

Head North on Irvine Avenue, just past the Anne Street roundabout, The Villas will be on your right, take a right at the Y, first house on the right.



Listed By:  
Lake-N-Woods Realty

Affinity Real Estate Inc. participates in the Regional Multiple Listing Service of Minnesota, Inc Broker Reciprocity (sm) program, allowing us to display other broker's listings on our website. All properties are subject to prior sale, change or withdrawal.



Call Affinity Real Estate

**218-237-3333**

[info@affinityrealestate.com](mailto:info@affinityrealestate.com)



Affinity Real Estate - 600 Park Avenue South - Park Rapids MN 56470



website: [www.AffinityRealEstate.com](http://www.AffinityRealEstate.com) | email: [info@affinityrealestate.com](mailto:info@affinityrealestate.com) | office: 218-237-3333 | fax:218-237-3377

**Affinity**  
REAL ESTATE INC

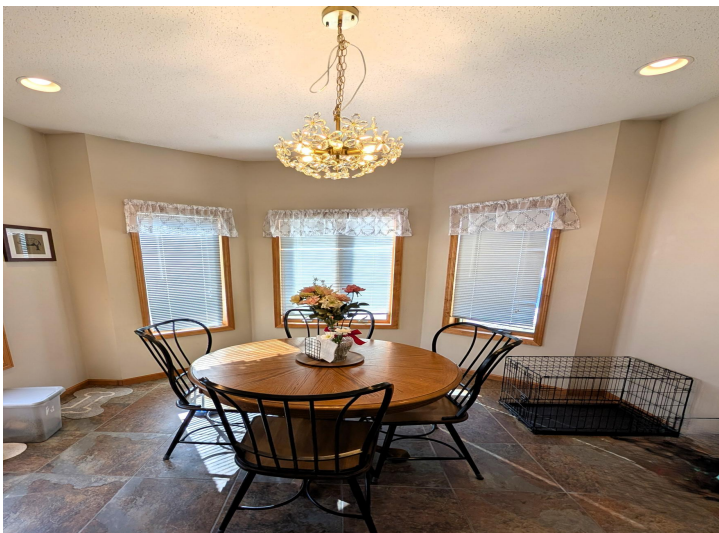
**\$307,000**  
MLS 7036333 Residential  
4240 Irvine Avenue  
Bemidji MN 56601



website: [www.AffinityRealEstate.com](http://www.AffinityRealEstate.com) | email: [info@affinityrealestate.com](mailto:info@affinityrealestate.com) | office: 218-237-3333 | fax:218-237-3377

**Affinity**  
REAL ESTATE INC

**\$307,000**  
MLS 7036333 Residential  
4240 Irvine Avenue  
Bemidji MN 56601



website: [www.AffinityRealEstate.com](http://www.AffinityRealEstate.com) | email: [info@affinityrealestate.com](mailto:info@affinityrealestate.com) | office: 218-237-3333 | fax: 218-237-3377

**Affinity**  
REAL ESTATE INC

**\$307,000**  
MLS 7036333 Residential  
4240 Irvine Avenue  
Bemidji MN 56601



website: [www.AffinityRealEstate.com](http://www.AffinityRealEstate.com) | email: [info@affinityrealestate.com](mailto:info@affinityrealestate.com) | office: 218-237-3333 | fax:218-237-3377



**\$307,000**  
MLS 7036333 Residential  
4240 Irvine Avenue  
Bemidji MN 56601

website: [www.AffinityRealEstate.com](http://www.AffinityRealEstate.com) | email: [info@affinityrealestate.com](mailto:info@affinityrealestate.com) | office: 218-237-3333 | fax:218-237-3377



**\$307,000**  
MLS 7036333 Residential  
4240 Irvine Avenue  
Bemidji MN 56601

website: [www.AffinityRealEstate.com](http://www.AffinityRealEstate.com) | email: [info@affinityrealestate.com](mailto:info@affinityrealestate.com) | office: 218-237-3333 | fax:218-237-3377



**\$307,000**  
MLS 7036333 Residential  
4240 Irvine Avenue  
Bemidji MN 56601