



MLS 7036866 Land

\$1

40 Acres
Raw Land

TBD County Highway 47
Osage MN 56470

Status: Active

Description:

This is a live, absolute auction: Saturday April 11, 2026 at 1:01 p.m. CST. Showing of the properties will be Friday, April 3, 2026 at 1:01 pm to 4:01 pm. First half of real of 2026 real estate taxes will be paid by the seller. Buyer is responsible for second half of real estate taxes. 3 Different parcels will be sold.

This is a 40 acre parcel

Additional Details:

Lot Acres	40
Lot Dimensions	40
School District	1384
Taxes	\$242
Taxes with Assessments	\$242
Tax Year	2025

Additional Features:

Driving Directions:

From MN Hwy 34 and Becker County 47, go South 4 miles to Becker County 42. Then east 1 mile to 550th avenue, then south on 550th to the auction sight



Listed By:
Centennial Realty

Affinity Real Estate Inc. participates in the Regional Multiple Listing Service of Minnesota, Inc Broker Reciprocity (sm) program, allowing us to display other broker's listings on our website. All properties are subject to prior sale, change or withdrawal.



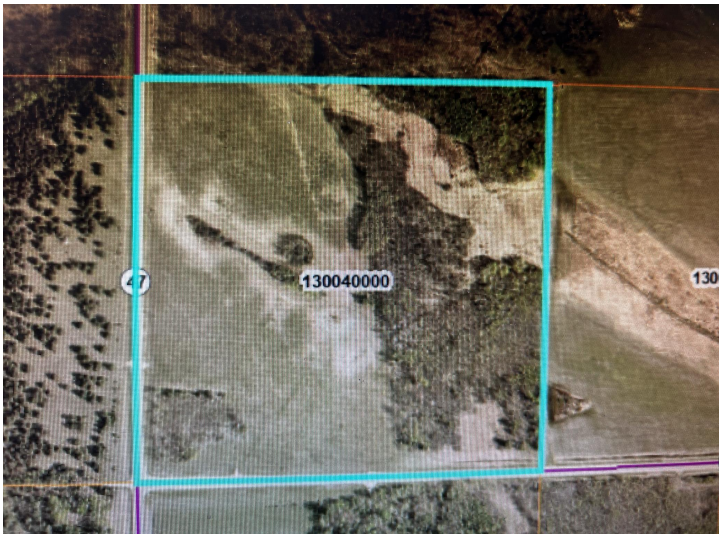
Call Affinity Real Estate

218-237-3333

info@affinityrealestate.com



Affinity Real Estate - 600 Park Avenue South - Park Rapids MN 56470



website: www.AffinityRealEstate.com | email: info@affinityrealestate.com | office: 218-237-3333 | fax:218-237-3377



\$1
MLS 7036866 Land
TBD County Highway 47
Osage MN 56470