



MLS 7036916 Residential

**\$539,900**

1,722 sq ft  
3 bedrooms  
2 baths

15828 Old Stonebridge Trail  
Brainerd MN 56401

Status: Active

**Description:**

New Construction on Half Acre Near Mississippi River & Gilbert Lake!

This 3-bedroom home offers vaulted ceilings, an open-concept layout, and a warm, inviting electric fireplace. The kitchen stands out with custom cabinetry, quartz countertops, slate steel appliances, and a large center island—perfect for entertaining. The private primary suite features a tiled walk-in shower, dual quartz vanities, and high-end finishes throughout. Enjoy year-round comfort with in-floor radiant heat, forced air, and central A/C. Additional highlights include luxury vinyl plank flooring, LP siding, 3-panel mission doors, covered front porch, and a heated garage. Set on a spacious half-acre lot in a quiet neighborhood with a walking path around a private community lake. Ideally located just minutes from Brainerd/Baxter, dining, golf, and outdoor recreation. Schedule your showing today!  
Virtual staging used in photos.

**Additional Details:**

Year Built	2025
Lot Acres	0.53
Lot Dimensions	90x203x140x203
Garage Stalls	3
School District	896
Taxes	\$407
Taxes with Assessments	\$407
Tax Year	2025

**Additional Features:**

**Basement:** None **Fuel:** Array **Garage:** 3 **Heat:** Forced Air, Hot Water, In-Floor Heating **Sewer:** City Sewer/Connected **Water:** City Water/Connected **Air Conditioning:** Central Air

**Driving Directions:**

From Brainerd - East on Riverside Dr - Left on Ashmun Rd - Right on Old Stonebridge Trail to property on right.



Listed By:  
NextHome Horizons

Affinity Real Estate Inc. participates in the Regional Multiple Listing Service of Minnesota, Inc Broker Reciprocity (sm) program, allowing us to display other broker's listings on our website. All properties are subject to prior sale, change or withdrawal.



Call Affinity Real Estate

**218-237-3333**

[info@affinityrealestate.com](mailto:info@affinityrealestate.com)



Affinity Real Estate - 600 Park Avenue South - Park Rapids MN 56470



website: [www.AffinityRealEstate.com](http://www.AffinityRealEstate.com) | email: [info@affinityrealestate.com](mailto:info@affinityrealestate.com) | office: 218-237-3333 | fax:218-237-3377



**\$539,900**  
MLS 7036916 Residential  
15828 Old Stonebridge Trail  
Brainerd MN 56401



website: [www.AffinityRealEstate.com](http://www.AffinityRealEstate.com) | email: [info@affinityrealestate.com](mailto:info@affinityrealestate.com) | office: 218-237-3333 | fax:218-237-3377



**\$539,900**  
MLS 7036916 Residential  
15828 Old Stonebridge Trail  
Brainerd MN 56401



website: [www.AffinityRealEstate.com](http://www.AffinityRealEstate.com) | email: [info@affinityrealestate.com](mailto:info@affinityrealestate.com) | office: 218-237-3333 | fax: 218-237-3377

**Affinity**  
REAL ESTATE INC

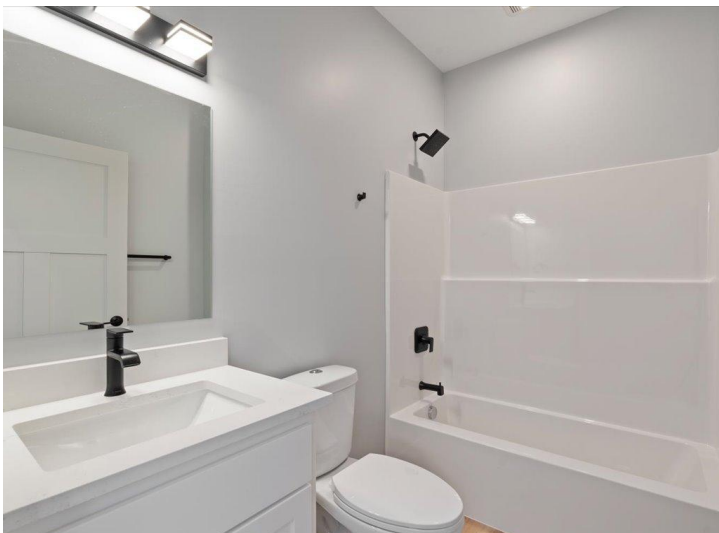
**\$539,900**  
MLS 7036916 Residential  
15828 Old Stonebridge Trail  
Brainerd MN 56401



website: [www.AffinityRealEstate.com](http://www.AffinityRealEstate.com) | email: [info@affinityrealestate.com](mailto:info@affinityrealestate.com) | office: 218-237-3333 | fax:218-237-3377

**Affinity**  
REAL ESTATE INC

**\$539,900**  
MLS 7036916 Residential  
15828 Old Stonebridge Trail  
Brainerd MN 56401



website: [www.AffinityRealEstate.com](http://www.AffinityRealEstate.com) | email: [info@affinityrealestate.com](mailto:info@affinityrealestate.com) | office: 218-237-3333 | fax:218-237-3377



**\$539,900**  
MLS 7036916 Residential  
15828 Old Stonebridge Trail  
Brainerd MN 56401



website: [www.AffinityRealEstate.com](http://www.AffinityRealEstate.com) | email: [info@affinityrealestate.com](mailto:info@affinityrealestate.com) | office: 218-237-3333 | fax:218-237-3377



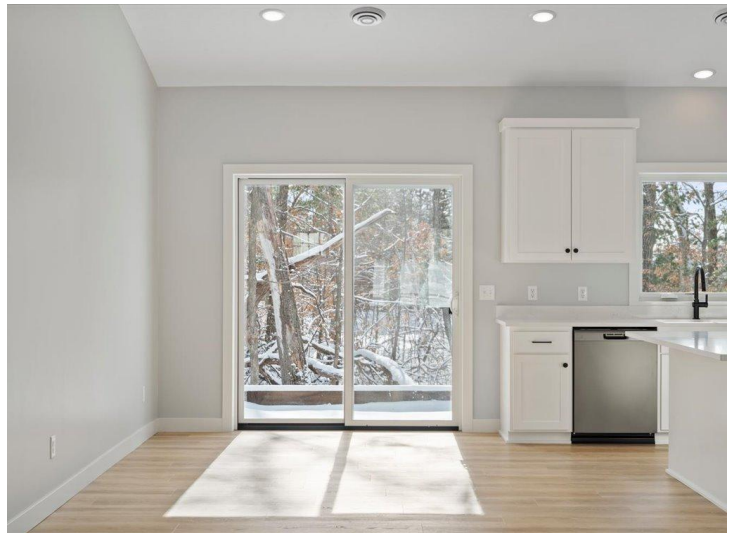
**\$539,900**  
MLS 7036916 Residential  
15828 Old Stonebridge Trail  
Brainerd MN 56401



website: [www.AffinityRealEstate.com](http://www.AffinityRealEstate.com) | email: [info@affinityrealestate.com](mailto:info@affinityrealestate.com) | office: 218-237-3333 | fax:218-237-3377



**\$539,900**  
MLS 7036916 Residential  
15828 Old Stonebridge Trail  
Brainerd MN 56401



website: [www.AffinityRealEstate.com](http://www.AffinityRealEstate.com) | email: [info@affinityrealestate.com](mailto:info@affinityrealestate.com) | office: 218-237-3333 | fax: 218-237-3377

**Affinity**  
REAL ESTATE INC

**\$539,900**  
MLS 7036916 Residential  
15828 Old Stonebridge Trail  
Brainerd MN 56401



website: [www.AffinityRealEstate.com](http://www.AffinityRealEstate.com) | email: [info@affinityrealestate.com](mailto:info@affinityrealestate.com) | office: 218-237-3333 | fax:218-237-3377



**\$539,900**  
MLS 7036916 Residential  
15828 Old Stonebridge Trail  
Brainerd MN 56401