



MLS 7037349 Land

\$70,399

24835 Square Feet
Raw Land

Lot 13 Block 1 South Ridge Road
Detroit Lakes MN 56501

Status: Active



Description:

Lot 13 Block 1 Southwood Shores Estates. Welcome to Southwood Shores Estates, the newest residential development in the heart of Detroit Lakes! Nestled just minutes from the city's vibrant downtown and pristine lakes, this exclusive community features 24 thoughtfully designed lots, offering the perfect balance of natural beauty, modern living, and small-town charm. Highlights Include: Spacious, build-ready lots in a peaceful, private setting, City utilities and paved roads throughout. Close proximity to schools, shops, restaurants, and recreation. Just minutes from Detroit Lake public access and the Detroit Mountain Recreation Area. Whether you're looking to build your forever home, a seasonal retreat, or an investment property, Southwood Shores Estates offers the ideal canvas to bring your vision to life.

Additional Details:

Lot Acres	24835
Lot Dimensions	irregular
School District	1074
Taxes	\$1
Taxes with Assessments	\$1
Tax Year	2025

Additional Features:

Driving Directions:

From Highway 10, exit on South Shore Drive. Property is on the corner of South Shore Drive and 270th Ave. From Hwy 59 head south, left on County road 6, right on West lake Drive, Left on Long Bridge road to South Shore Drive. Property is on the corner of South Shore Drive and 270th Ave.



Listed By:
HomeSmart Adventure Realty

Affinity Real Estate Inc. participates in the Regional Multiple Listing Service of Minnesota, Inc Broker Reciprocity (sm) program, allowing us to display other broker's listings on our website. All properties are subject to prior sale, change or withdrawal.



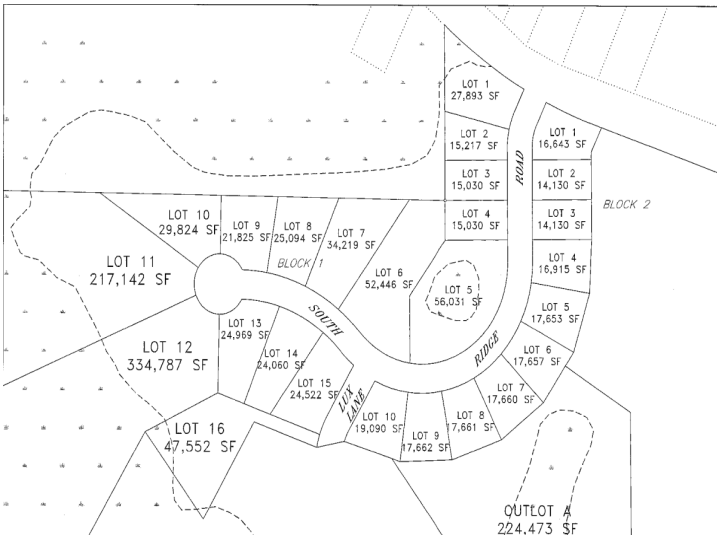
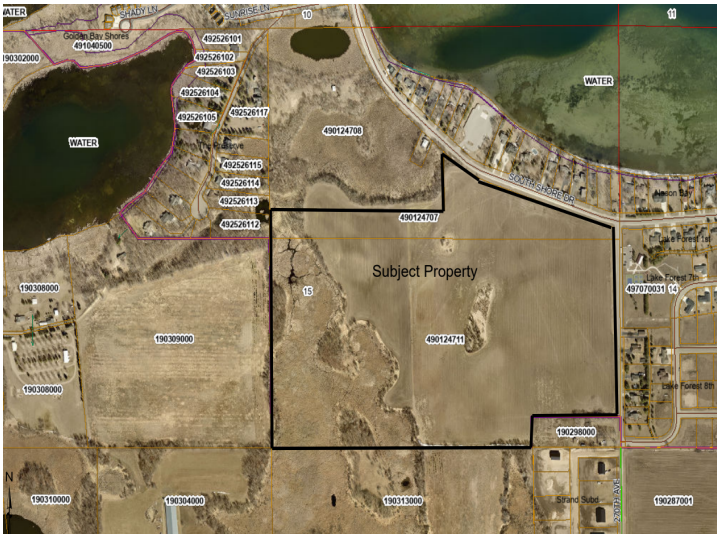
Call Affinity Real Estate

218-237-3333

info@affinityrealestate.com



Affinity Real Estate - 600 Park Avenue South - Park Rapids MN 56470



website: www.AffinityRealEstate.com | email: info@affinityrealestate.com | office: 218-237-3333 | fax: 218-237-3377



\$70,399
 MLS 7037349 Land
 Lot 13 Block 1 South Ridge
 Road
 Detroit Lakes MN 56501