

Google Street View

Click any parcel for parcel details.



Parcel Disclaimer

Ruler

Legend

Google data ©2026 Imagery ©2026 Airbus, CNES / Airbus, Maxar Technologies, USDA/FPAC/Geo 200 ft

Report a map error



MLS 7037378 Land

\$89,500

4.5 Acres
Subdivided

TBD Cains Crossway
Pequot Lakes MN 56472

Status: Active

Description:

Beautiful 4.5 acre corner lot in the Hunts Point Wildlife Estates Community. This open, generous lot offers space and country feel, yet is conveniently located on a paved road with electric to the property and ready for your new home or barndominium/shouse. In addition to your lot, this common interest community has walking trails and a shared common area to enjoy the best that nature has to offer. Located between Pequot Lakes and Nisswa for all of your other dining, entertainment and recreation needs.

Additional Details:

Lot Acres	4.5
Lot Dimensions	533x370x536x370
School District	181
Taxes	\$390
Taxes with Assessments	\$390
Tax Year	2025

Additional Features:

Driving Directions:

Take Hwy 371 N from Nisswa to County Rd 29 West

follow 4.5 miles to sign & development on the Right.



Listed By:
Kurilla Real Estate LTD

Affinity Real Estate Inc. participates in the Regional Multiple Listing Service of Minnesota, Inc Broker Reciprocity (sm) program, allowing us to display other broker's listings on our website. All properties are subject to prior sale, change or withdrawal.



Call Affinity Real Estate

218-237-3333

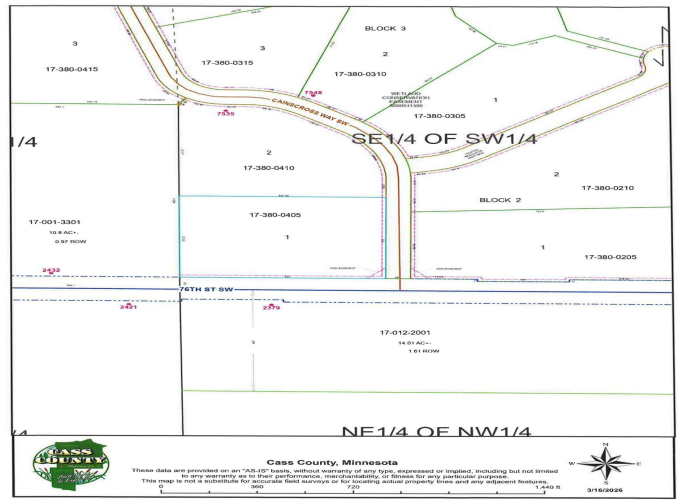
info@affinityrealestate.com



Affinity Real Estate - 600 Park Avenue South - Park Rapids MN 56470



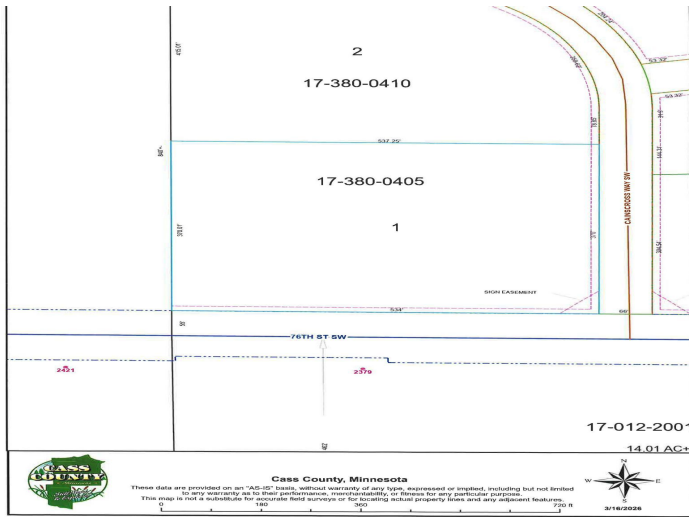
Parcel Disclaimer
 Ruler
 Legend
 ©2026 Imagery ©2026 Airbus, CNES / Airbus, Maxar Technologies, USA/FRC/GEO 200 ft
 Report a map error



website: www.AffinityRealEstate.com | email: info@affinityrealestate.com | office: 218-237-3333 | fax: 218-237-3377



\$89,500
 MLS 7037378 Land
 TBD Cains Crossway
 Pequot Lakes MN 56472



website: www.AffinityRealEstate.com | email: info@affinityrealestate.com | office: 218-237-3333 | fax: 218-237-3377



\$89,500
 MLS 7037378 Land
 TBD Cains Crossway
 Pequot Lakes MN 56472