



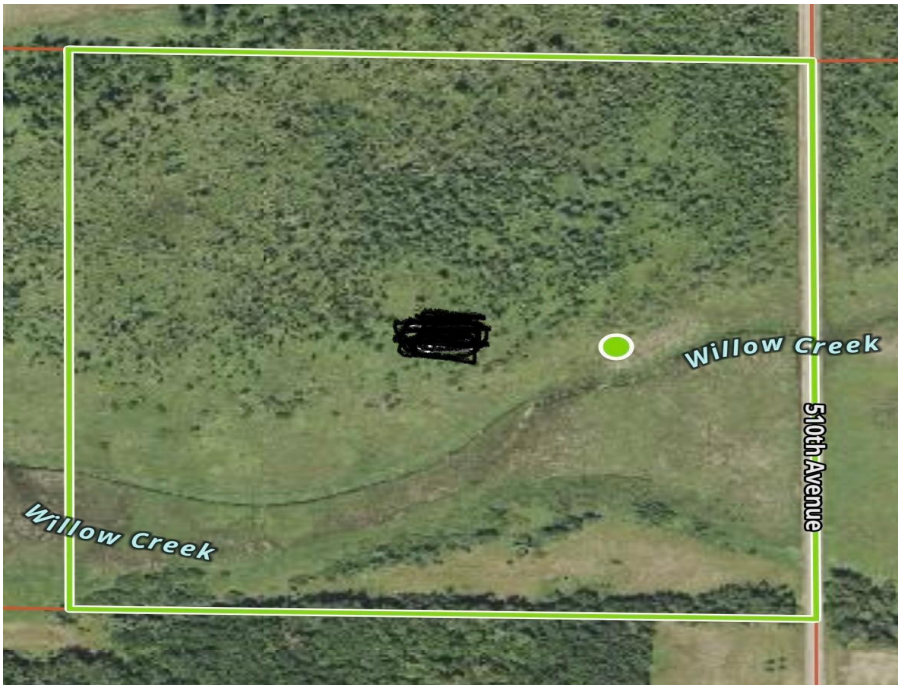
MLS 7037466 Land

\$156,000

40 Acres
Raw Land

38xxx 510th Avenue
New York Mills MN 56567

Status: Pending



Description:

Here's your chance to own 40 acres of land made for hunters! This property offers woods, excellent cover and natural habitat that attracts deer, turkey and other wildlife. Willow creek flows through the property. Bring your stands, cut a few trails, and set up your own hunting camp. Spend your mornings in the stand and your evenings around the fire telling stories from the days hunt. Properties like this don't come around often - secure your own piece of ground and enjoy the outdoors the way it was meant to be enjoyed. Portable deer stands will be removed.

Additional Details:

Lot Acres	40
Lot Dimensions	40
School District	1962
Taxes	\$662
Taxes with Assessments	\$662
Tax Year	2025

Additional Features:

Driving Directions:

west on highway 14 from NYM to 510th. North on 510th



Listed By:
Centennial Realty

Affinity Real Estate Inc. participates in the Regional Multiple Listing Service of Minnesota, Inc Broker Reciprocity (sm) program, allowing us to display other broker's listings on our website. All properties are subject to prior sale, change or withdrawal.



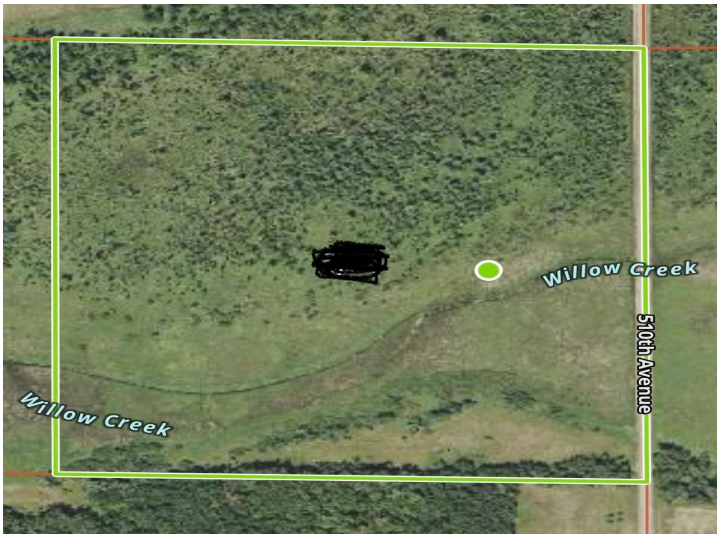
Call Affinity Real Estate

218-237-3333

info@affinityrealestate.com



Affinity Real Estate - 600 Park Avenue South - Park Rapids MN 56470



website: www.AffinityRealEstate.com | email: info@affinityrealestate.com | office: 218-237-3333 | fax:218-237-3377



\$156,000
MLS 7037466 Land
38xxx 510th Avenue
New York Mills MN 56567