



MLS 7037903 Residential

\$509,900

3,500 sq ft
5 bedrooms
3 baths

14093 Cherrywood Drive
Baxter MN 56425

Status: Active

Description:

Welcome to this beautiful, well-maintained home located in a quiet neighborhood in the sought-after Baxter area. It's rare to find a home that offers an open floor plan, five spacious bedrooms with an additional flex/bonus room, three full bathrooms, soaring vaulted ceilings, and generously sized rooms throughout. The main floor primary bedroom features walkout access to the large deck, a spacious walk-through closet, and a private bathroom with dual vanity sinks, a jetted tub, and a separate tile walk-in shower. The kitchen showcases beautiful hickory cabinets, granite countertops, a new tile backsplash and stainless-steel appliances—blending style with functionality. Natural woodwork throughout the home adds warmth and timeless character. The fully finished basement features high ceilings, a full bathroom, a large family room, and a bar area—perfect for entertaining guests.

This home also offers an extra-large 14 x 40 back deck overlooking peaceful woods, creating an ideal setting for relaxing or hosting. The property is complete with an oversized 24 x 30 attached garage, perfect for extra storage and workspace. In addition, the owners have also recently installed a new reverse osmosis water system, adding even more value and convenience. All of this and more conveniently located near lakes, parks, schools, shopping, dining, and healthcare. This home truly combines space, function, and style in the best way possible.

Additional Details:

Year Built	2013
Lot Acres	0.8
Lot Dimensions	132x262x132x262
Garage Stalls	2
School District	181
Taxes	\$4,677
Taxes with Assessments	\$4,702
Tax Year	2026

Additional Features:

Basement: Block, Daylight/Lookout Windows, Drain Tiled, Egress Window(s), Finished, Full, Sump Pump **Fuel:** Natural Gas **Garage:** 2 **Heat:** Forced Air **Sewer:** City Sewer/Connected **Water:** City Water/Connected **Air Conditioning:** Central Air

Driving Directions:

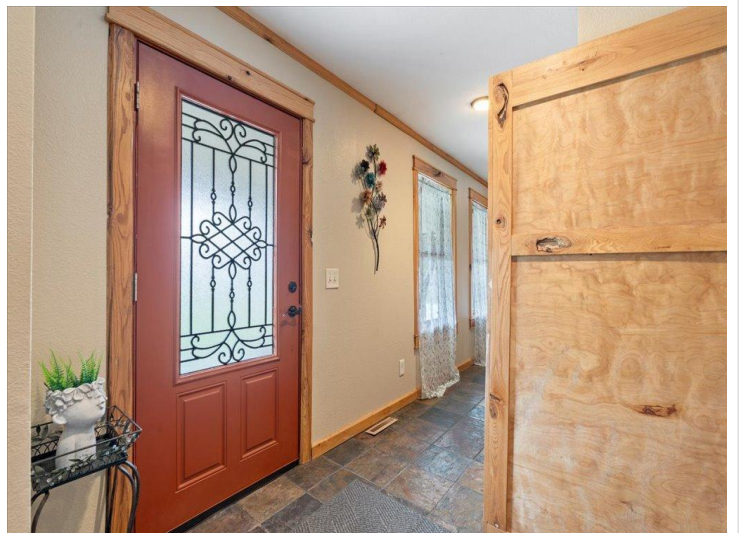


Listed By:  **Call Affinity Real Estate**
218-237-3333
info@affinityrealestate.com
Intersect on go west on 210 to right on Inglewood, drive to left on Excelsior to right on Cherrywood Dr to home on

Affinity Real Estate Inc. participates in the Regional Multiple Listing Service of Minnesota, Inc Broker Reciprocity (sm) program, allowing us to display other broker's listings on our website. All properties are subject to prior sale, change or withdrawal.



Affinity Real Estate - 600 Park Avenue South - Park Rapids MN 56470



website: www.AffinityRealEstate.com | email: info@affinityrealestate.com | office: 218-237-3333 | fax:218-237-3377

Affinity
REAL ESTATE INC

\$509,900
MLS 7037903 Residential
14093 Cherrywood Drive
Baxter MN 56425



website: www.AffinityRealEstate.com | email: info@affinityrealestate.com | office: 218-237-3333 | fax: 218-237-3377

Affinity
REAL ESTATE INC

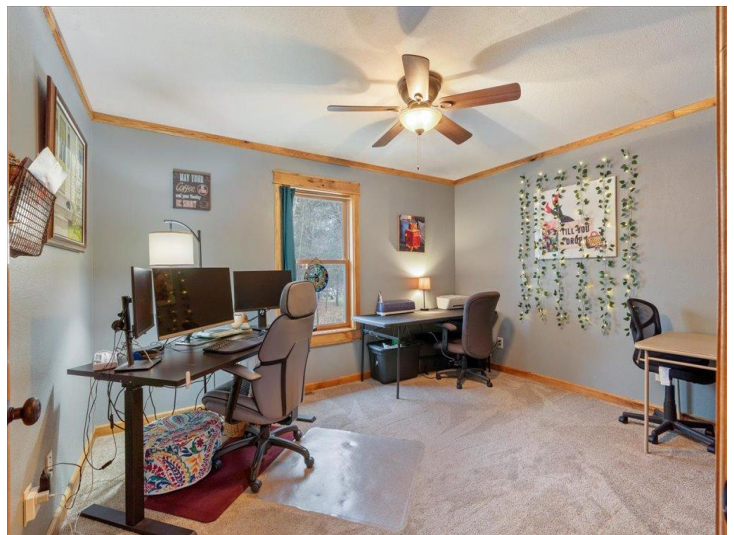
\$509,900
MLS 7037903 Residential
14093 Cherrywood Drive
Baxter MN 56425



website: www.AffinityRealEstate.com | email: info@affinityrealestate.com | office: 218-237-3333 | fax: 218-237-3377

Affinity
REAL ESTATE INC

\$509,900
MLS 7037903 Residential
14093 Cherrywood Drive
Baxter MN 56425



website: www.AffinityRealEstate.com | email: info@affinityrealestate.com | office: 218-237-3333 | fax: 218-237-3377

Affinity
REAL ESTATE INC

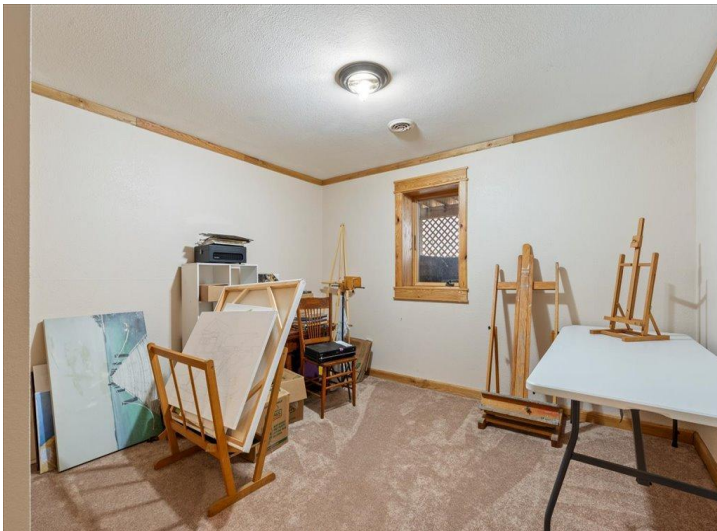
\$509,900
MLS 7037903 Residential
14093 Cherrywood Drive
Baxter MN 56425



website: www.AffinityRealEstate.com | email: info@affinityrealestate.com | office: 218-237-3333 | fax:218-237-3377

Affinity
REAL ESTATE INC

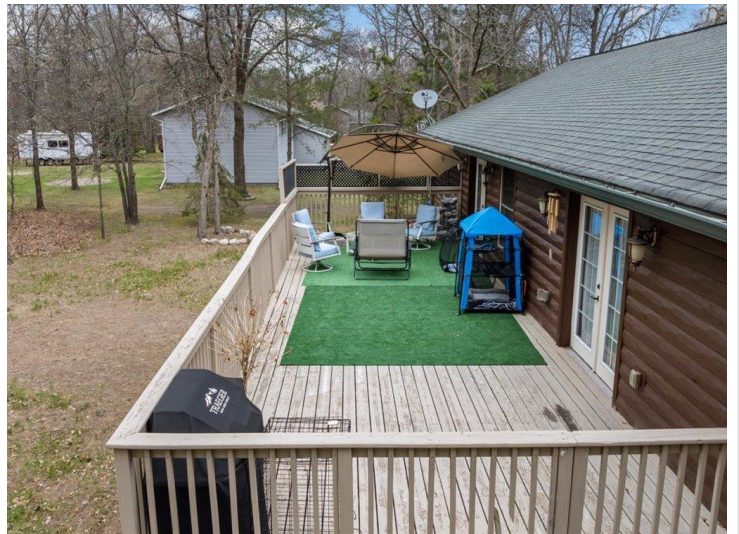
\$509,900
MLS 7037903 Residential
14093 Cherrywood Drive
Baxter MN 56425



website: www.AffinityRealEstate.com | email: info@affinityrealestate.com | office: 218-237-3333 | fax: 218-237-3377

Affinity
REAL ESTATE INC

\$509,900
MLS 7037903 Residential
14093 Cherrywood Drive
Baxter MN 56425



website: www.AffinityRealEstate.com | email: info@affinityrealestate.com | office: 218-237-3333 | fax:218-237-3377

Affinity
REAL ESTATE INC

\$509,900
MLS 7037903 Residential
14093 Cherrywood Drive
Baxter MN 56425



website: www.AffinityRealEstate.com | email: info@affinityrealestate.com | office: 218-237-3333 | fax:218-237-3377



\$509,900
MLS 7037903 Residential
14093 Cherrywood Drive
Baxter MN 56425



website: www.AffinityRealEstate.com | email: info@affinityrealestate.com | office: 218-237-3333 | fax:218-237-3377

Affinity
REAL ESTATE INC

\$509,900
MLS 7037903 Residential
14093 Cherrywood Drive
Baxter MN 56425



website: www.AffinityRealEstate.com | email: info@affinityrealestate.com | office: 218-237-3333 | fax:218-237-3377



\$509,900
MLS 7037903 Residential
14093 Cherrywood Drive
Baxter MN 56425