



MLS 7037933 Residential

\$7,125,000

3,860 sq ft
7 bedrooms
5 baths

47023 Black Bear Beach Road
Ponsford MN 56575

Status: Active

Description:

BAD MEDICINE LAKE ESTATE

Black Bear Beach Road | Ponsford, Minnesota

Once in a generation, a property assembles itself into something that transcends category. The Bad Medicine Lake Estate is not a lake home. It is not a cabin compound. It is not a retreat. It is all of these things simultaneously; and it is the only one of its kind in the region.

Stretching nearly 904 feet of pristine Bad Medicine Lake shoreline across four contiguous parcels, this estate represents what happens when extraordinary vision, meticulous craftsmanship, and an uncompromising standard of excellence converge on one of Minnesota's most coveted glacial lakes. To replicate this assemblage today would require years of acquisitions, millions in construction, and a degree of coordination that simply cannot be manufactured.

THE LODGE — The architectural crown jewel: a newly constructed luxury lake residence spanning approximately 3,860 finished square feet across three levels. This is not a renovation' it is a masterwork built from the ground up. Hand-hewn log walls, locally quarried river stone, and reclaimed timber ceilings carry a century of warmth while housing every modern luxury. The great room anchors around a soaring floor-to-ceiling stone fireplace beneath a cathedral ceiling. The chef's kitchen features a dramatic end-grain butcher block island, vintage mint Big Chill appliances, and a professional grade gas range. The primary suite offers a freestanding stainless and porcelain soaking tub beneath forest-framed windows. A formal dining hall seating 12+, wood-fired outdoor sauna, and multi-level decks with lake views complete the picture. 301 feet of shoreline.

THE CABIN PARCEL — Two additional residences expand the estate's hosting capacity for true multi-generational living: the Summer House (2 bed / 1 bath / 1,004 sq ft) and the Winter Cabin (1 bed / 1 bath / 768 sq ft). This parcel also features its own wood-fired outdoor sauna, a coveted sand beach, dock system, and boat storage. 285 feet of shoreline.

THE CONNECTOR PARCEL — A professionally landscaped parcel with lit paver pathways bridges the estate's living zones in resort-style continuity. 83 feet of shoreline.

THE BUILDABLE PARCEL — 235 feet of undeveloped lake frontage, ready to hold, develop, or pass to the next generation. Pure optionality — one of the most valuable traits in high-end real estate.

Bad Medicine Lake is among Becker County's most pristine glacial waters; clear, spring-fed, and treasured by a quiet ownership community that values privacy above all. In reviewing every significant regional lake transaction over the past 24 months, comparable properties closed between \$2.2M–\$4.7M, typically containing 100–200 feet of shoreline and capability. This estate surpasses comparable metrics by multiples.

Aspirational. This is a private estate acquisition of magnitude, held for generations, and never repeated.

Affinity Real Estate Inc. participates in the Regional Multiple Listing Service of Minnesota, Inc Broker Reciprocity (sm) program, allowing us to display other broker's listings on our website. All properties are subject to prior sale, change or withdrawal.

Year Built 2020
Lot Acres 4.75
Lot Dimensions Irregular
School District 435
Taxes \$12,664



218-237-3333

info@affinityrealestate.com



Affinity Real Estate - 600 Park Avenue South - Park Rapids MN 56470



website: www.AffinityRealEstate.com | email: info@affinityrealestate.com | office: 218-237-3333 | fax:218-237-3377



\$7,125,000
MLS 7037933 Residential
47023 Black Bear Beach
Road
Ponsford MN 56575



website: www.AffinityRealEstate.com | email: info@affinityrealestate.com | office: 218-237-3333 | fax: 218-237-3377

Affinity
REAL ESTATE INC

\$7,125,000
MLS 7037933 Residential
47023 Black Bear Beach
Road
Ponsford MN 56575



website: www.AffinityRealEstate.com | email: info@affinityrealestate.com | office: 218-237-3333 | fax:218-237-3377

Affinity
REAL ESTATE INC

\$7,125,000
MLS 7037933 Residential
47023 Black Bear Beach
Road
Ponsford MN 56575



website: www.AffinityRealEstate.com | email: info@affinityrealestate.com | office: 218-237-3333 | fax:218-237-3377



\$7,125,000
MLS 7037933 Residential
47023 Black Bear Beach
Road
Ponsford MN 56575



website: www.AffinityRealEstate.com | email: info@affinityrealestate.com | office: 218-237-3333 | fax: 218-237-3377



\$7,125,000
MLS 7037933 Residential
47023 Black Bear Beach
Road
Ponsford MN 56575



website: www.AffinityRealEstate.com | email: info@affinityrealestate.com | office: 218-237-3333 | fax: 218-237-3377

Affinity
REAL ESTATE INC

\$7,125,000
MLS 7037933 Residential
47023 Black Bear Beach
Road
Ponsford MN 56575



website: www.AffinityRealEstate.com | email: info@affinityrealestate.com | office: 218-237-3333 | fax: 218-237-3377

Affinity
REAL ESTATE INC

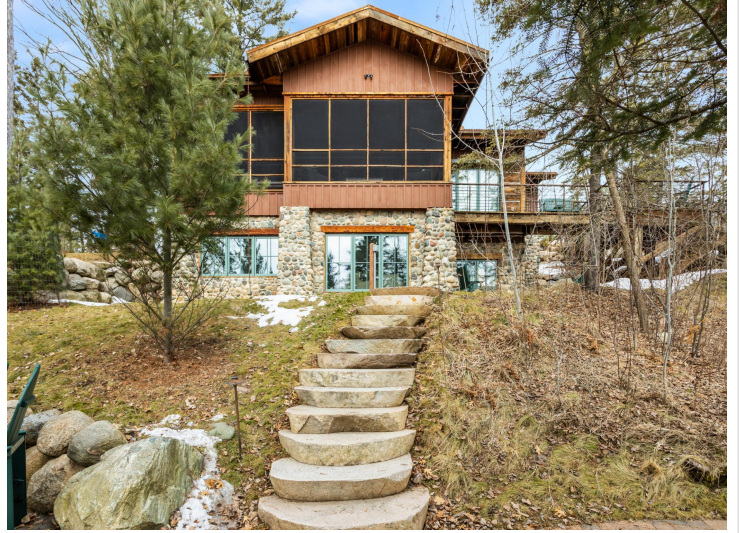
\$7,125,000
MLS 7037933 Residential
47023 Black Bear Beach
Road
Ponsford MN 56575



website: www.AffinityRealEstate.com | email: info@affinityrealestate.com | office: 218-237-3333 | fax: 218-237-3377

Affinity
REAL ESTATE INC

\$7,125,000
MLS 7037933 Residential
47023 Black Bear Beach
Road
Ponsford MN 56575



website: www.AffinityRealEstate.com | email: info@affinityrealestate.com | office: 218-237-3333 | fax:218-237-3377

Affinity
REAL ESTATE INC

\$7,125,000
MLS 7037933 Residential
47023 Black Bear Beach
Road
Ponsford MN 56575



website: www.AffinityRealEstate.com | email: info@affinityrealestate.com | office: 218-237-3333 | fax: 218-237-3377

Affinity
REAL ESTATE INC

\$7,125,000
MLS 7037933 Residential
47023 Black Bear Beach
Road
Ponsford MN 56575



website: www.AffinityRealEstate.com | email: info@affinityrealestate.com | office: 218-237-3333 | fax:218-237-3377



\$7,125,000
MLS 7037933 Residential
47023 Black Bear Beach
Road
Ponsford MN 56575



website: www.AffinityRealEstate.com | email: info@affinityrealestate.com | office: 218-237-3333 | fax: 218-237-3377

Affinity
REAL ESTATE INC

\$7,125,000
MLS 7037933 Residential
47023 Black Bear Beach
Road
Ponsford MN 56575



website: www.AffinityRealEstate.com | email: info@affinityrealestate.com | office: 218-237-3333 | fax:218-237-3377



\$7,125,000
MLS 7037933 Residential
47023 Black Bear Beach
Road
Ponsford MN 56575



website: www.AffinityRealEstate.com | email: info@affinityrealestate.com | office: 218-237-3333 | fax: 218-237-3377

Affinity
REAL ESTATE INC

\$7,125,000
MLS 7037933 Residential
47023 Black Bear Beach
Road
Ponsford MN 56575



website: www.AffinityRealEstate.com | email: info@affinityrealestate.com | office: 218-237-3333 | fax:218-237-3377

Affinity
REAL ESTATE INC

\$7,125,000
MLS 7037933 Residential
47023 Black Bear Beach
Road
Ponsford MN 56575



website: www.AffinityRealEstate.com | email: info@affinityrealestate.com | office: 218-237-3333 | fax:218-237-3377



\$7,125,000
MLS 7037933 Residential
47023 Black Bear Beach
Road
Ponsford MN 56575



website: www.AffinityRealEstate.com | email: info@affinityrealestate.com | office: 218-237-3333 | fax:218-237-3377

Affinity
REAL ESTATE INC

\$7,125,000
MLS 7037933 Residential
47023 Black Bear Beach
Road
Ponsford MN 56575



website: www.AffinityRealEstate.com | email: info@affinityrealestate.com | office: 218-237-3333 | fax:218-237-3377



\$7,125,000
MLS 7037933 Residential
47023 Black Bear Beach
Road
Ponsford MN 56575



website: www.AffinityRealEstate.com | email: info@affinityrealestate.com | office: 218-237-3333 | fax:218-237-3377

Affinity
REAL ESTATE INC

\$7,125,000
MLS 7037933 Residential
47023 Black Bear Beach
Road
Ponsford MN 56575



website: www.AffinityRealEstate.com | email: info@affinityrealestate.com | office: 218-237-3333 | fax: 218-237-3377

Affinity
REAL ESTATE INC

\$7,125,000
MLS 7037933 Residential
47023 Black Bear Beach
Road
Ponsford MN 56575