



MLS 7038024 Land

\$129,000

25.6 Acres
Raw Land

TBD 310th Street
Deer Creek MN 56527

Status: Pending

Description:

Heavily wooded 25 acre parcel outside Deer Creek, ready for your future plans! Parcel features rows of planted Aspen and Pine. Adjacent home and 40 acres available, see MLS#7037879.

Additional Details:

Lot Acres	25.6
Lot Dimensions	1377x1070x1315x659 IRR
School District	1053
Taxes	\$328
Taxes with Assessments	\$328
Tax Year	2025

Additional Features:

Driving Directions:

From Deer Creek, North on County Road 106, to Left on 310th St, to property on Left



Listed By:
Edina Realty, Inc.

Affinity Real Estate Inc. participates in the Regional Multiple Listing Service of Minnesota, Inc Broker Reciprocity (sm) program, allowing us to display other broker's listings on our website. All properties are subject to prior sale, change or withdrawal.



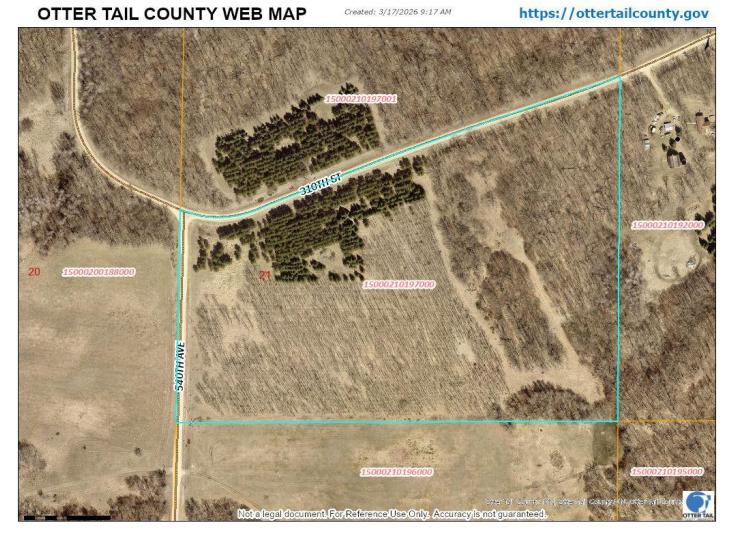
Call Affinity Real Estate

218-237-3333

info@affinityrealestate.com



Affinity Real Estate - 600 Park Avenue South - Park Rapids MN 56470



website: www.AffinityRealEstate.com | email: info@affinityrealestate.com | office: 218-237-3333 | fax:218-237-3377



\$129,000
MLS 7038024 Land
TBD 310th Street
Deer Creek MN 56527