



MLS 7038200 Residential

**\$380,000**

1,290 sq ft  
2 bedrooms  
2 baths

3583 Pine Ridge Road  
Brainerd MN 56401

Status: Active



**Description:**

COUNTRY LIVING AT IT'S FINEST! Close to lots of entertainment and recreation, year-round in the Brainerd Lakes Area. Ideal mix of comfort, space. and convenience. A brand-new home that has never been lived in. Built in 2021 all new appliances, flooring, fixtures, etc. Open kitchen with big walk-in pantry, center island for all your entertaining needs. Main bedroom has a large closet and bathroom ensuite with double sinks and beautiful tile shower. The second bedroom is nice sized with spacious walk-in closet. Large windows throughout the home for amazing natural lighting. Double attached garage that's heated and insulated. The property also offers another garage/guest house which is a 3-stall garage 40x26 with full kitchen and 3/4 bathroom which would be amazing for a mancave/entertaining area by adding big screen tv, foosball table, pool table or whatever works best for you. 2 additional sheds for storage. Lots of room for entertaining guests or just hanging out with family. Super cool outdoor furniture made from wire reels. Beautiful wildlife out the door to enjoy.

**Additional Details:**

Year Built	2021
Lot Acres	0.76
Lot Dimensions	320x199
Garage Stalls	5
School District	896
Taxes	\$2,203
Taxes with Assessments	\$2,228
Tax Year	2024

**Additional Features:**

**Basement:** Crawl Space **Fuel:** Array **Garage:** 5 **Heat:** Forced Air **Sewer:** Mound Septic, Private Sewer **Water:** Drilled **Air Conditioning:** Central Air

**Driving Directions:**

Highway 371 towards Nisswa take a left onto Green Gables Rd to left onto Shady Lane to right onto Pine Ridge.



Listed By:  
Edina Realty, Inc.

Affinity Real Estate Inc. participates in the Regional Multiple Listing Service of Minnesota, Inc Broker Reciprocity (sm) program, allowing us to display other broker's listings on our website. All properties are subject to prior sale, change or withdrawal.



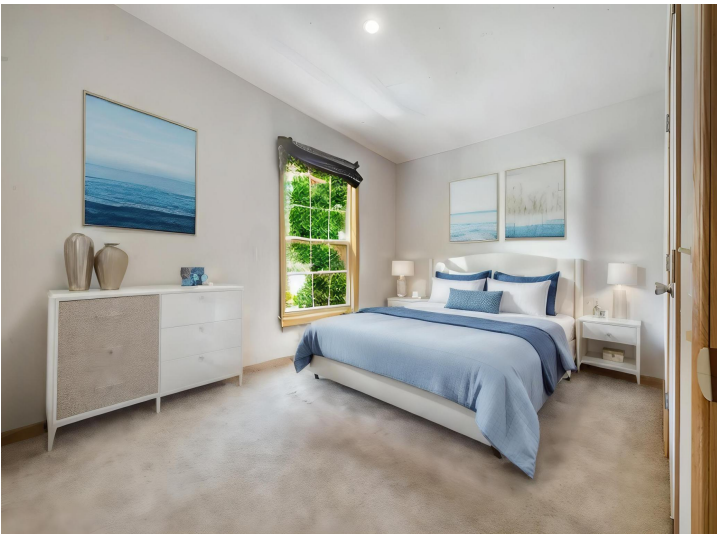
Call Affinity Real Estate

**218-237-3333**

[info@affinityrealestate.com](mailto:info@affinityrealestate.com)



Affinity Real Estate - 600 Park Avenue South - Park Rapids MN 56470



website: [www.AffinityRealEstate.com](http://www.AffinityRealEstate.com) | email: [info@affinityrealestate.com](mailto:info@affinityrealestate.com) | office: 218-237-3333 | fax: 218-237-3377

**Affinity**  
REAL ESTATE INC

**\$380,000**  
MLS 7038200 Residential  
3583 Pine Ridge Road  
Brainerd MN 56401



website: [www.AffinityRealEstate.com](http://www.AffinityRealEstate.com) | email: [info@affinityrealestate.com](mailto:info@affinityrealestate.com) | office: 218-237-3333 | fax: 218-237-3377

**Affinity**  
REAL ESTATE INC

**\$380,000**  
MLS 7038200 Residential  
3583 Pine Ridge Road  
Brainerd MN 56401



website: [www.AffinityRealEstate.com](http://www.AffinityRealEstate.com) | email: [info@affinityrealestate.com](mailto:info@affinityrealestate.com) | office: 218-237-3333 | fax: 218-237-3377

**Affinity**  
REAL ESTATE INC

**\$380,000**  
MLS 7038200 Residential  
3583 Pine Ridge Road  
Brainerd MN 56401



website: [www.AffinityRealEstate.com](http://www.AffinityRealEstate.com) | email: [info@affinityrealestate.com](mailto:info@affinityrealestate.com) | office: 218-237-3333 | fax: 218-237-3377

**Affinity**  
REAL ESTATE INC

**\$380,000**  
MLS 7038200 Residential  
3583 Pine Ridge Road  
Brainerd MN 56401



website: [www.AffinityRealEstate.com](http://www.AffinityRealEstate.com) | email: [info@affinityrealestate.com](mailto:info@affinityrealestate.com) | office: 218-237-3333 | fax:218-237-3377



**\$380,000**  
MLS 7038200 Residential  
3583 Pine Ridge Road  
Brainerd MN 56401