



MLS 7038252 Residential

**\$299,900**

1,264 sq ft  
3 bedrooms  
1 baths

27142 County Highway 73  
Deer Creek MN 56527

Status: Active

**Description:**

Country living on 18 acres! Find your happy place with this 3-bedroom, 1-bath home set on 18 acres. Located just off a main highway, this property offers the perfect balance of convenience and countryside charm. The property has some tillable, making it an excellent opportunity for farming, income rental, or expanding your agricultural footprint. A 3.51 acres is in CRP, adding both habitat value and additional income potential.

The home has great bones and is ready for your personal touch. With a little updating, this can be the country home you have been wanting. More photos to come

**Additional Details:**

Year Built	1957
Lot Acres	18.76
Lot Dimensions	18.76
Garage Stalls	2
School District	1053
Taxes	\$1,938
Taxes with Assessments	\$1,938
Tax Year	2025

**Additional Features:**

**Basement:** Block, Full **Fuel:** Array **Garage:** 2 **Heat:** Forced Air **Sewer:** Septic System Compliant - No **Water:** Sand Point **Air Conditioning:** Central Air

**Driving Directions:**

East out of Deer Creek on Hwy 50 to 73 South. South on Hwy 73 to property.



Listed By:  
Centennial Realty

Affinity Real Estate Inc. participates in the Regional Multiple Listing Service of Minnesota, Inc Broker Reciprocity (sm) program, allowing us to display other broker's listings on our website. All properties are subject to prior sale, change or withdrawal.



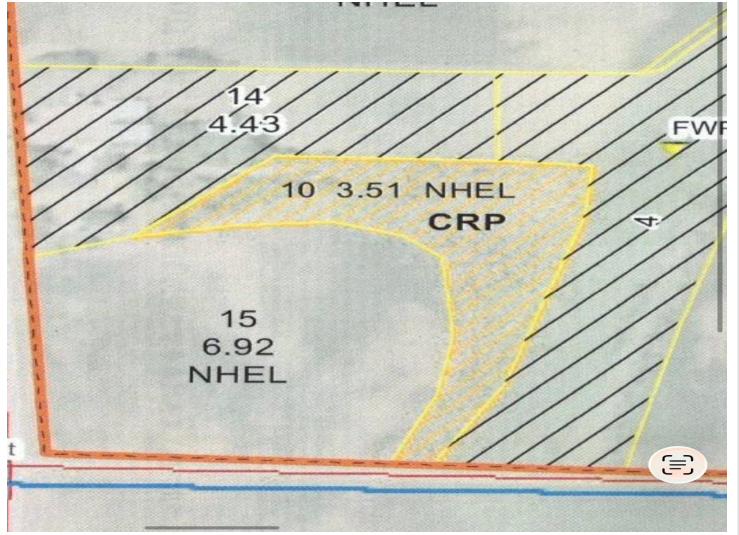
Call Affinity Real Estate

**218-237-3333**

[info@affinityrealestate.com](mailto:info@affinityrealestate.com)



Affinity Real Estate - 600 Park Avenue South - Park Rapids MN 56470



website: [www.AffinityRealEstate.com](http://www.AffinityRealEstate.com) | email: [info@affinityrealestate.com](mailto:info@affinityrealestate.com) | office: 218-237-3333 | fax:218-237-3377



**\$299,900**  
MLS 7038252 Residential  
27142 County Highway 73  
Deer Creek MN 56527

website: [www.AffinityRealEstate.com](http://www.AffinityRealEstate.com) | email: [info@affinityrealestate.com](mailto:info@affinityrealestate.com) | office: 218-237-3333 | fax:218-237-3377



**\$299,900**

MLS 7038252 Residential  
27142 County Highway 73  
Deer Creek MN 56527

website: [www.AffinityRealEstate.com](http://www.AffinityRealEstate.com) | email: [info@affinityrealestate.com](mailto:info@affinityrealestate.com) | office: 218-237-3333 | fax:218-237-3377



**\$299,900**

MLS 7038252 Residential  
27142 County Highway 73  
Deer Creek MN 56527

website: [www.AffinityRealEstate.com](http://www.AffinityRealEstate.com) | email: [info@affinityrealestate.com](mailto:info@affinityrealestate.com) | office: 218-237-3333 | fax:218-237-3377



**\$299,900**

MLS 7038252 Residential  
27142 County Highway 73  
Deer Creek MN 56527