



MLS 7038361 Residential

\$309,000

2,128 sq ft
4 bedrooms
2 baths

16050 280th Street
Sebeka MN 56477

Status: Active

Description:

Welcome to your private country oasis! This spacious home is nestled on 18 picturesque acres featuring mature trees and open fields, offering the perfect blend of privacy, recreation, and hobby farm potential. Inside, you'll find four generous bedrooms, each with its own walk-in closet. The primary suite also includes a full private bathroom for ultimate comfort. Outside, the 28x48 insulated and heated pole barn provides ample space for storage, a workshop, or all your toys. The home offers dual heating options, including a propane forced air furnace and a Classic Series outdoor wood furnace. For added efficiency, the water heater is set up to run off the outdoor furnace if desired. Additional updates include newer energy-efficient Andersen windows, a new drilled well in 2024, and all appliances are five years old or newer, giving you peace of mind for years to come. This is a rare opportunity to own an acreage property with flexible heating, abundant space, and endless possibilities – ready for you to make it your own.

Additional Details:

Year Built	1997
Lot Acres	18
Lot Dimensions	966x660x1300x397x329x264
Garage Stalls	6
School District	2285
Taxes	\$2,108
Taxes with Assessments	\$2,108
Tax Year	2025

Additional Features:

Basement: None **Fuel:** Array **Garage:** 6 **Heat:** Forced Air, Fireplace(s) **Sewer:** Mound Septic, Private Sewer **Water:** 4-Inch Submersible **Air Conditioning:** None

Driving Directions:

From Sebeka, Head East on 280th street for 2.7 miles. Property is on the left (north)



Listed By:
RE/MAX Results - Nisswa

Affinity Real Estate Inc. participates in the Regional Multiple Listing Service of Minnesota, Inc Broker Reciprocity (sm) program, allowing us to display other broker's listings on our website. All properties are subject to prior sale, change or withdrawal.



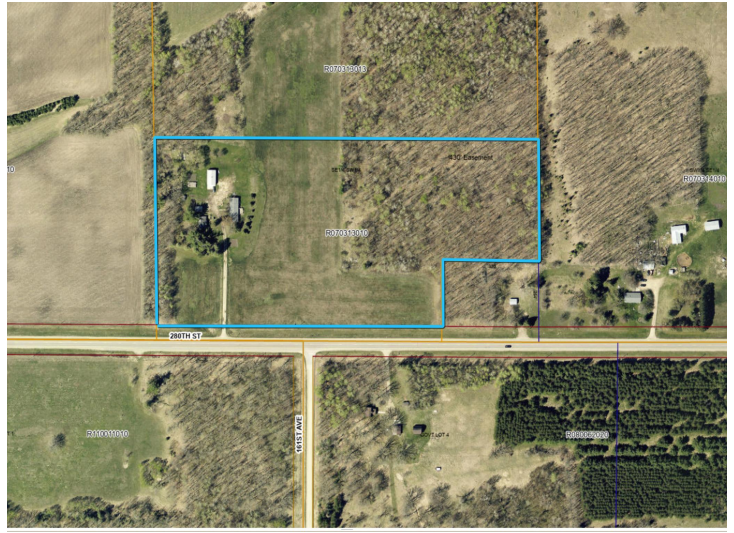
Call Affinity Real Estate

218-237-3333

info@affinityrealestate.com



Affinity Real Estate - 600 Park Avenue South - Park Rapids MN 56470



website: www.AffinityRealEstate.com | email: info@affinityrealestate.com | office: 218-237-3333 | fax: 218-237-3377

Affinity
REAL ESTATE INC

\$309,000
MLS 7038361 Residential
16050 280th Street
Sebeka MN 56477



website: www.AffinityRealEstate.com | email: info@affinityrealestate.com | office: 218-237-3333 | fax:218-237-3377

Affinity
REAL ESTATE INC

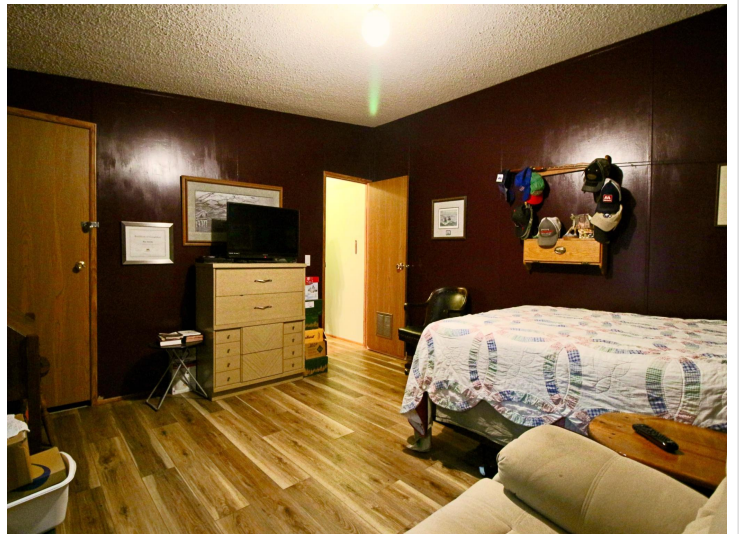
\$309,000
MLS 7038361 Residential
16050 280th Street
Sebeka MN 56477



website: www.AffinityRealEstate.com | email: info@affinityrealestate.com | office: 218-237-3333 | fax:218-237-3377

Affinity
REAL ESTATE INC

\$309,000
MLS 7038361 Residential
16050 280th Street
Sebeka MN 56477



website: www.AffinityRealEstate.com | email: info@affinityrealestate.com | office: 218-237-3333 | fax:218-237-3377



\$309,000
MLS 7038361 Residential
16050 280th Street
Sebeka MN 56477



website: www.AffinityRealEstate.com | email: info@affinityrealestate.com | office: 218-237-3333 | fax:218-237-3377

Affinity
REAL ESTATE INC

\$309,000
MLS 7038361 Residential
16050 280th Street
Sebeka MN 56477



website: www.AffinityRealEstate.com | email: info@affinityrealestate.com | office: 218-237-3333 | fax:218-237-3377



\$309,000
MLS 7038361 Residential
16050 280th Street
Sebeka MN 56477

website: www.AffinityRealEstate.com | email: info@affinityrealestate.com | office: 218-237-3333 | fax:218-237-3377



\$309,000
MLS 7038361 Residential
16050 280th Street
Sebeka MN 56477

website: www.AffinityRealEstate.com | email: info@affinityrealestate.com | office: 218-237-3333 | fax:218-237-3377



\$309,000
MLS 7038361 Residential
16050 280th Street
Sebeka MN 56477