



MLS 7038617 Residential

**\$519,900**

2,504 sq ft  
4 bedrooms  
3 baths

8080 County Road 127  
Brainerd MN 56401

Status: Active

**Description:**

Situated on 2.66 wooded acres in the lakes area, this well-maintained 4 bed, 3 bath home offers a clean, move-in ready feel with plenty of space inside and out. The layout includes comfortable living areas that work well for both everyday living and hosting. The yard is nicely landscaped with room for gardens and even a small wildlife pond. The property also features two separate double garages, both insulated and heated—ideal for storage, a workshop, or extra hangout space—with one including a small kitchenette. Outside, you'll find a ground-level deck, an upper composite deck off the dining area, and a fenced raised garden with its own shed.

**Additional Details:**

Year Built	2004
Lot Acres	2.66
Lot Dimensions	611x374x434
Garage Stalls	4
School District	896
Taxes	\$2,239
Taxes with Assessments	\$2,264
Tax Year	2026

**Additional Features:**

**Basement:** Finished, Full, Walkout **Fuel:** Array **Garage:** 4 **Heat:** Forced Air **Sewer:** Private Sewer, Septic System Compliant - Yes **Water:** Well **Air Conditioning:** Central Air

**Driving Directions:**

N on MN 371 to right onto Ojibwa Rd, right onto Ojibwa Park Rd N, continue to County Rd 127 N, property is on the left



Listed By:  
Positive Realty

Affinity Real Estate Inc. participates in the Regional Multiple Listing Service of Minnesota, Inc Broker Reciprocity (sm) program, allowing us to display other broker's listings on our website. All properties are subject to prior sale, change or withdrawal.



**Call Affinity Real Estate**

**218-237-3333**

**info@affinityrealestate.com**



**Affinity Real Estate - 600 Park Avenue South - Park Rapids MN 56470**



website: [www.AffinityRealEstate.com](http://www.AffinityRealEstate.com) | email: [info@affinityrealestate.com](mailto:info@affinityrealestate.com) | office: 218-237-3333 | fax: 218-237-3377

**Affinity**  
REAL ESTATE INC

**\$519,900**  
MLS 7038617 Residential  
8080 County Road 127  
Brainerd MN 56401



website: [www.AffinityRealEstate.com](http://www.AffinityRealEstate.com) | email: [info@affinityrealestate.com](mailto:info@affinityrealestate.com) | office: 218-237-3333 | fax:218-237-3377

**Affinity**  
REAL ESTATE INC

**\$519,900**  
MLS 7038617 Residential  
8080 County Road 127  
Brainerd MN 56401



website: [www.AffinityRealEstate.com](http://www.AffinityRealEstate.com) | email: [info@affinityrealestate.com](mailto:info@affinityrealestate.com) | office: 218-237-3333 | fax:218-237-3377

**Affinity**  
REAL ESTATE INC

**\$519,900**  
MLS 7038617 Residential  
8080 County Road 127  
Brainerd MN 56401



website: [www.AffinityRealEstate.com](http://www.AffinityRealEstate.com) | email: [info@affinityrealestate.com](mailto:info@affinityrealestate.com) | office: 218-237-3333 | fax: 218-237-3377

**Affinity**  
REAL ESTATE INC

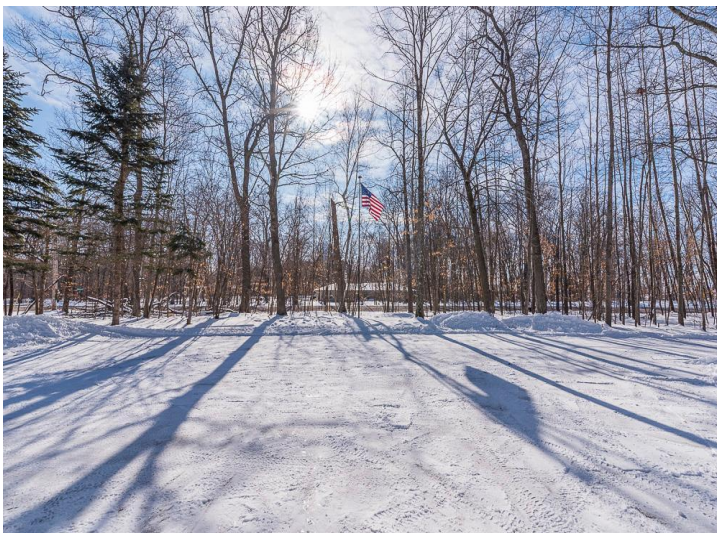
**\$519,900**  
MLS 7038617 Residential  
8080 County Road 127  
Brainerd MN 56401



website: [www.AffinityRealEstate.com](http://www.AffinityRealEstate.com) | email: [info@affinityrealestate.com](mailto:info@affinityrealestate.com) | office: 218-237-3333 | fax: 218-237-3377

**Affinity**  
REAL ESTATE INC

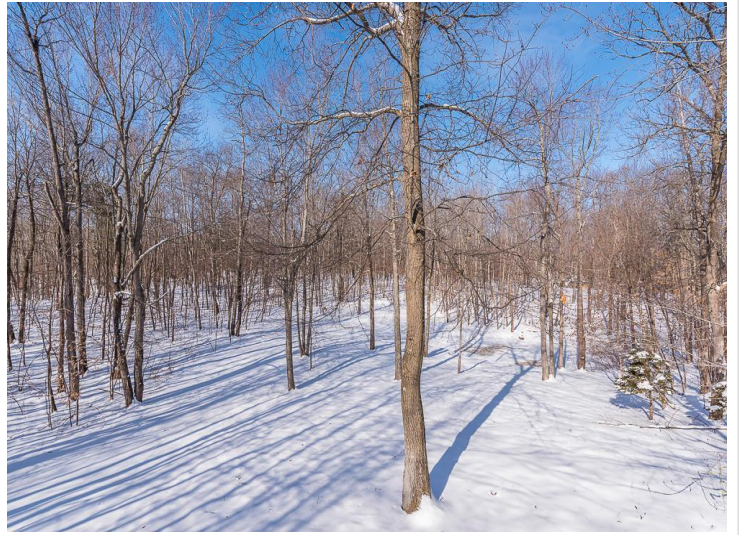
**\$519,900**  
MLS 7038617 Residential  
8080 County Road 127  
Brainerd MN 56401



website: [www.AffinityRealEstate.com](http://www.AffinityRealEstate.com) | email: [info@affinityrealestate.com](mailto:info@affinityrealestate.com) | office: 218-237-3333 | fax: 218-237-3377

**Affinity**  
REAL ESTATE INC

**\$519,900**  
MLS 7038617 Residential  
8080 County Road 127  
Brainerd MN 56401



website: [www.AffinityRealEstate.com](http://www.AffinityRealEstate.com) | email: [info@affinityrealestate.com](mailto:info@affinityrealestate.com) | office: 218-237-3333 | fax:218-237-3377



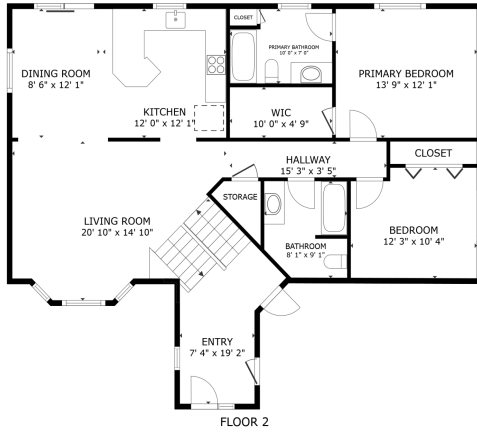
**\$519,900**  
MLS 7038617 Residential  
8080 County Road 127  
Brainerd MN 56401



website: [www.AffinityRealEstate.com](http://www.AffinityRealEstate.com) | email: [info@affinityrealestate.com](mailto:info@affinityrealestate.com) | office: 218-237-3333 | fax: 218-237-3377

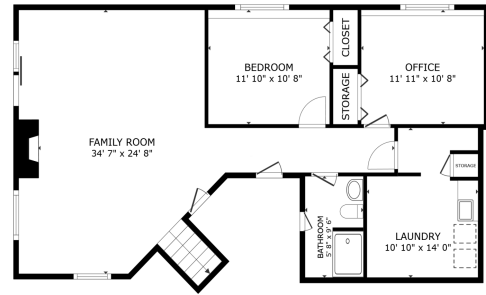


**\$519,900**  
 MLS 7038617 Residential  
 8080 County Road 127  
 Brainerd MN 56401



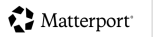
FLOOR 2

GROSS INTERNAL AREA  
 FLOOR 1 1,204 sq.ft. FLOOR 2 1,245 sq.ft.  
 TOTAL : 2,299 sq.ft.  
 SIZES AND DIMENSIONS ARE APPROXIMATE, ACTUAL MAY VARY.



FLOOR 1

GROSS INTERNAL AREA  
 FLOOR 1 1,204 sq.ft. FLOOR 2 1,245 sq.ft.  
 TOTAL : 2,299 sq.ft.  
 SIZES AND DIMENSIONS ARE APPROXIMATE, ACTUAL MAY VARY.



website: [www.AffinityRealEstate.com](http://www.AffinityRealEstate.com) | email: [info@affinityrealestate.com](mailto:info@affinityrealestate.com) | office: 218-237-3333 | fax:218-237-3377



**\$519,900**  
 MLS 7038617 Residential  
 8080 County Road 127  
 Brainerd MN 56401