



MLS 7038633 Residential

\$280,000

800 sq ft
1 bedrooms
1 baths

715 Lake Shore Drive
Bemidji MN 56601

Status: Active

Description:

Welcome to The Bixby, Bemidji's premier condominium development on the scenic south shores of Lake Bemidji. Unit 200, affectionately known as 'The Babe,' offers a front-row seat to spectacular sunsets and panoramic water views from your own private balcony.

This thoughtfully designed 800 sq. ft. home features:

9' ceilings, quartz countertops with an undercut sink, brand-new upper kitchen cabinetry, stainless steel appliances, a dedicated pantry, and a lake-facing primary bedroom. Triple-pane windows with quartz sills and soundproof insulation ensure a peaceful retreat. This building offers fully secured entry, two elevators, and heated indoor parking. Step out the back door to the city dock, where a portion of the slips are reserved exclusively for Bixby residents. You're steps away from the South Shore Beach, the state bike trail, and a short walk to the Sanford Center for Hockey! Hockey! Hockey! and other entertainment.

Comfort, quality, and lakefront convenience—all wrapped into one. Come see why life is better at The Bixby!

Additional Details:

Year Built	2021
Lot Acres	0.06
Lot Dimensions	348x228
Garage Stalls	1
School District	1386
Taxes	\$3,476
Taxes with Assessments	\$3,476
Tax Year	2026

Additional Features:

Basement: None **Fuel:** Array **Garage:** 1 **Heat:** Ductless Mini-Split **Sewer:** City Sewer/Connected **Water:** City Water/Connected **Air Conditioning:** Ductless Mini-Split

Driving Directions:

East on 1st Street to Central Ave SE, Left to Lakeshore Drive



Listed By:
Lake-N-Woods Realty

Affinity Real Estate Inc. participates in the Regional Multiple Listing Service of Minnesota, Inc Broker Reciprocity (sm) program, allowing us to display other broker's listings on our website. All properties are subject to prior sale, change or withdrawal.



Call Affinity Real Estate

218-237-3333

info@affinityrealestate.com



Affinity Real Estate - 600 Park Avenue South - Park Rapids MN 56470



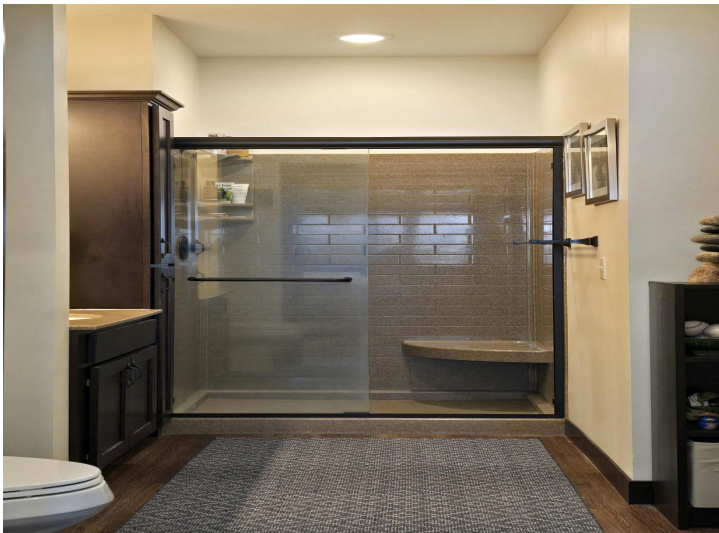
The **Babe**



website: www.AffinityRealEstate.com | email: info@affinityrealestate.com | office: 218-237-3333 | fax: 218-237-3377

Affinity
REAL ESTATE INC

\$280,000
MLS 7038633 Residential
715 Lake Shore Drive
Bemidji MN 56601



website: www.AffinityRealEstate.com | email: info@affinityrealestate.com | office: 218-237-3333 | fax:218-237-3377



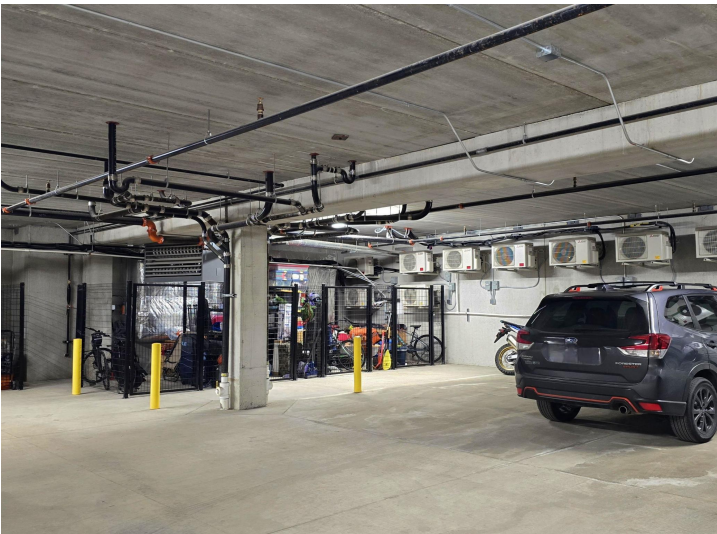
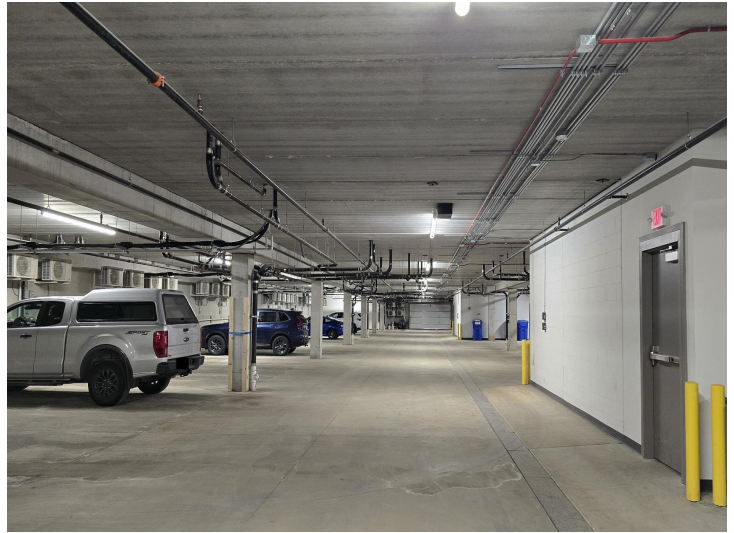
\$280,000
MLS 7038633 Residential
715 Lake Shore Drive
Bemidji MN 56601



website: www.AffinityRealEstate.com | email: info@affinityrealestate.com | office: 218-237-3333 | fax:218-237-3377

Affinity
REAL ESTATE INC

\$280,000
MLS 7038633 Residential
715 Lake Shore Drive
Bemidji MN 56601



website: www.AffinityRealEstate.com | email: info@affinityrealestate.com | office: 218-237-3333 | fax: 218-237-3377

Affinity
REAL ESTATE INC

\$280,000
MLS 7038633 Residential
715 Lake Shore Drive
Bemidji MN 56601



website: www.AffinityRealEstate.com | email: info@affinityrealestate.com | office: 218-237-3333 | fax:218-237-3377




\$280,000
MLS 7038633 Residential
715 Lake Shore Drive
Bemidji MN 56601



Attention all Bemidji Residents!

Pool passes are now available at the Country Inn and Suites! They are \$60 and give you 10 visits to the pool and hot tub. Passes may be used Sunday - Thursday, 7am-4pm. Stop by to get yours today!

For more information, call Brenda Bailey at 218-441-4881 or email Brenda.Bailey@countryinnamericas.com



COUNTRY INN & SUITES
by Wyndham

@ 927 Lake Shore Drive NE Bemidji, MN 56601



website: www.AffinityRealEstate.com | email: info@affinityrealestate.com | office: 218-237-3333 | fax: 218-237-3377



\$280,000
MLS 7038633 Residential
715 Lake Shore Drive
Bemidji MN 56601