



MLS 7038707 Land

\$40,000

5.12 Acres
Plat Designed

36XXX 395th Street
Dent MN 56528

Status: Active

Description:

Embrace the ultimate Lakes Country lifestyle with this expansive 5-acre vacant lot, offering the perfect blend of seclusion and convenience. Located just one mile from the charming town of Dent, this property serves as a blank slate for your Northwoods vision.

Your piece of Minnesota paradise awaits. Build, camp, and explore—all from your own 5-acre retreat.

Additional Details:

Lot Acres	5.12
Lot Dimensions	5.12 ac
School District	1955
Taxes	\$344
Taxes with Assessments	\$344
Tax Year	2025

Additional Features:

Driving Directions:

Corner of County Highway 35 and 395th St South of Dent, MN



Listed By:
eXp Realty

Affinity Real Estate Inc. participates in the Regional Multiple Listing Service of Minnesota, Inc Broker Reciprocity (sm) program, allowing us to display other broker's listings on our website. All properties are subject to prior sale, change or withdrawal.



Call Affinity Real Estate

218-237-3333

info@affinityrealestate.com



Affinity Real Estate - 600 Park Avenue South - Park Rapids MN 56470



website: www.AffinityRealEstate.com | email: info@affinityrealestate.com | office: 218-237-3333 | fax:218-237-3377

Affinity
REAL ESTATE INC

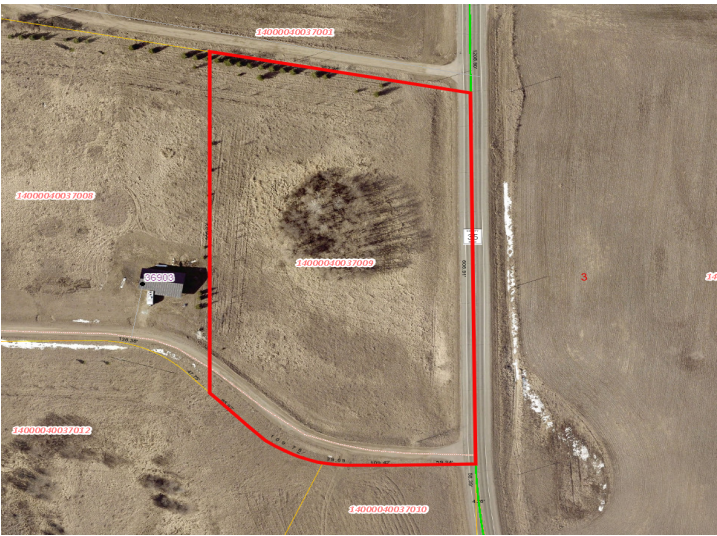
\$40,000
MLS 7038707 Land
36XXX 395th Street
Dent MN 56528



website: www.AffinityRealEstate.com | email: info@affinityrealestate.com | office: 218-237-3333 | fax:218-237-3377



\$40,000
MLS 7038707 Land
36XXX 395th Street
Dent MN 56528



website: www.AffinityRealEstate.com | email: info@affinityrealestate.com | office: 218-237-3333 | fax:218-237-3377



\$40,000
MLS 7038707 Land
36XXX 395th Street
Dent MN 56528