



MLS 7038891 Residential

\$267,500

800 sq ft
1 bedrooms
1 baths

715 Lake Shore Drive
Bemidji MN 56601

Status: Active

Description:

Welcome to The Bixby ~ your serene lakeside retreat!

Nestled on the scenic south shores of Lake Bemidji, and located on the first floor, Unit 100 is a dream come true for those seeking a blend of luxury and tranquility. Imagine ending every day with a front-row seat to golden sunsets and shimmering water views, all from the comfort of your own private balcony.

This thoughtfully curated 800 sq. ft. sanctuary is designed with beauty in mind:

Elegant Finishes: Feel the touch of luxury with soaring 9' ceilings, graceful quartz countertops, and a stunning onyx shower system.

A Thoughtful Layout: Wake up to the gentle light of the lake in your primary bedroom, and enjoy the ease of a dedicated pantry and private laundry room.

Peace & Quiet: Wrapped in triple-pane windows and soundproof insulation, "The Babe" is a quiet retreat from the world outside.


Building Amenities: Enjoy the peace of mind that comes with a fully secured entry, heated indoor parking, and the ease of two elevators.

Step out your back door to the city dock, where private slips await Bixby residents. Whether you're strolling along the South Shore beach, cycling the lake-loop trail, or catching a hockey game at the Sanford Center, everything you love is just a heartbeat away.

Comfort, quality, and effortless lakefront living—all wrapped into one. Come discover why life is simply more beautiful at The Bixby!

Additional Details:

| | |
|------------------------|---------|
| Year Built | 2021 |
| Lot Acres | 0.06 |
| Lot Dimensions | 348x228 |
| Garage Stalls | 1 |
| School District | 1386 |
| Taxes | \$3,476 |
| Taxes with Assessments | \$3,476 |
| Tax Year | 2026 |



Listed By:
Lake-N-Woods Realty

Basement: None **Fuel:** Array **Garage:** 1 **Heat:** Ductless Mini-Split **Sewer:** City Sewer/Water Connected **Water:** City Water/Connected **Air Conditioning:** Ductless Mini-Split

Affinity Real Estate Inc. participates in the Regional Multiple Listing Service of Minnesota, Inc Broker Reciprocity (sm) program, allowing us to display other broker's listings on our website. All properties are subject to prior sale, change or withdrawal.

Driving Directions:
East on 1st Street to Central Ave SE, Left to Lakeshore Drive



Call Affinity Real Estate

218-237-3333

info@affinityrealestate.com



Affinity Real Estate - 600 Park Avenue South - Park Rapids MN 56470



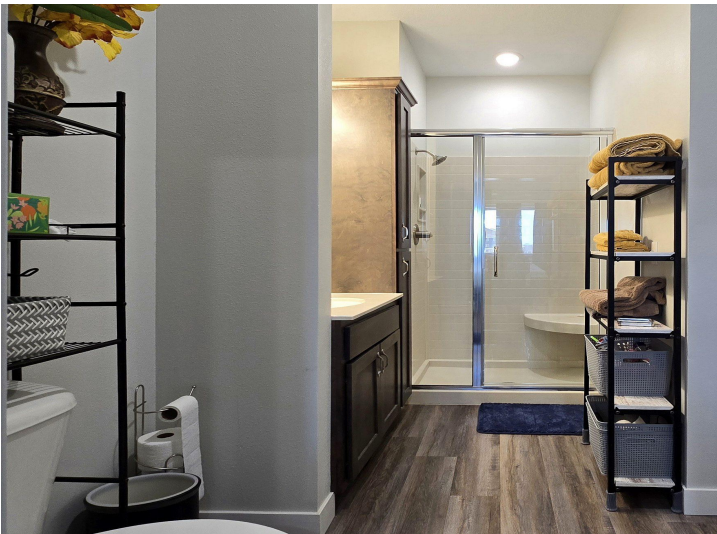
The **Babe**



website: www.AffinityRealEstate.com | email: info@affinityrealestate.com | office: 218-237-3333 | fax: 218-237-3377



\$267,500
MLS 7038891 Residential
715 Lake Shore Drive
Bemidji MN 56601



website: www.AffinityRealEstate.com | email: info@affinityrealestate.com | office: 218-237-3333 | fax:218-237-3377



\$267,500
MLS 7038891 Residential
715 Lake Shore Drive
Bemidji MN 56601



website: www.AffinityRealEstate.com | email: info@affinityrealestate.com | office: 218-237-3333 | fax:218-237-3377



\$267,500
MLS 7038891 Residential
715 Lake Shore Drive
Bemidji MN 56601



website: www.AffinityRealEstate.com | email: info@affinityrealestate.com | office: 218-237-3333 | fax: 218-237-3377

Affinity
REAL ESTATE INC

\$267,500
MLS 7038891 Residential
715 Lake Shore Drive
Bemidji MN 56601

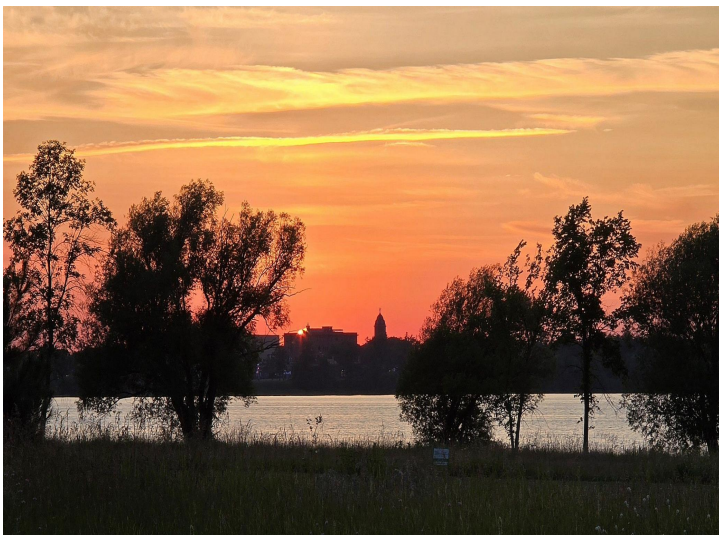


Attention all Bemidji Residents!

Pool passes are now available at the Country Inn and Suites! They are \$60 and give you 10 visits to the pool and hot tub. Passes may be used Sunday - Thursday, 7am-4pm. Stop by to get yours today!

For more information, call Brenda Bailey at 218-441-4881 or email Brenda.Bailey@countryinnamericas.com

COUNTRY INN & SUITES
 @ 927 Lake Shore Drive NE Bemidji, MN 56601



website: www.AffinityRealEstate.com | email: info@affinityrealestate.com | office: 218-237-3333 | fax: 218-237-3377



\$267,500
 MLS 7038891 Residential
 715 Lake Shore Drive
 Bemidji MN 56601