



MLS 7038904 Residential

\$279,000

2,968 sq ft
5 bedrooms
3 baths

1019 Beltrami Avenue
Bemidji MN 56601

Status: Active

Description:

Move-in ready and thoughtfully updated throughout, this spacious two-story home offers 5 bedrooms and 3 bathrooms, along with a full basement. Recent improvements include the addition of a main-floor bathroom, updated kitchen cabinetry, new flooring, a new furnace, and a new roof scheduled for completion in 2026. Additional features include a double detached garage and a fenced backyard. Conveniently located within walking distance of Bemidji State University, parks, Lake Bemidji, restaurants, and shopping.

Additional Details:

| | |
|------------------------|---------|
| Year Built | 1910 |
| Lot Acres | 0.16 |
| Lot Dimensions | 50x140 |
| Garage Stalls | 2 |
| School District | 1386 |
| Taxes | \$2,314 |
| Taxes with Assessments | \$2,314 |
| Tax Year | 2025 |

Additional Features:

Fuel: Array Heat: Boiler

Driving Directions:

From downtown Bemidji take Bemidji Ave to 10th St NW. Left on 10th St (turn west) to Beltrami Ave. Right on Beltrami Ave (north). Home will be on your left.



Listed By:
Better Homes and Gardens Real Estate First Cho

Affinity Real Estate Inc. participates in the Regional Multiple Listing Service of Minnesota, Inc Broker Reciprocity (sm) program, allowing us to display other broker's listings on our website. All properties are subject to prior sale, change or withdrawal.



Call Affinity Real Estate

218-237-3333

info@affinityrealestate.com



Affinity Real Estate - 600 Park Avenue South - Park Rapids MN 56470



website: www.AffinityRealEstate.com | email: info@affinityrealestate.com | office: 218-237-3333 | fax:218-237-3377



\$279,000
MLS 7038904 Residential
1019 Beltrami Avenue
Bemidji MN 56601



website: www.AffinityRealEstate.com | email: info@affinityrealestate.com | office: 218-237-3333 | fax:218-237-3377

Affinity
REAL ESTATE INC

\$279,000
MLS 7038904 Residential
1019 Beltrami Avenue
Bemidji MN 56601



website: www.AffinityRealEstate.com | email: info@affinityrealestate.com | office: 218-237-3333 | fax:218-237-3377

Affinity
REAL ESTATE INC

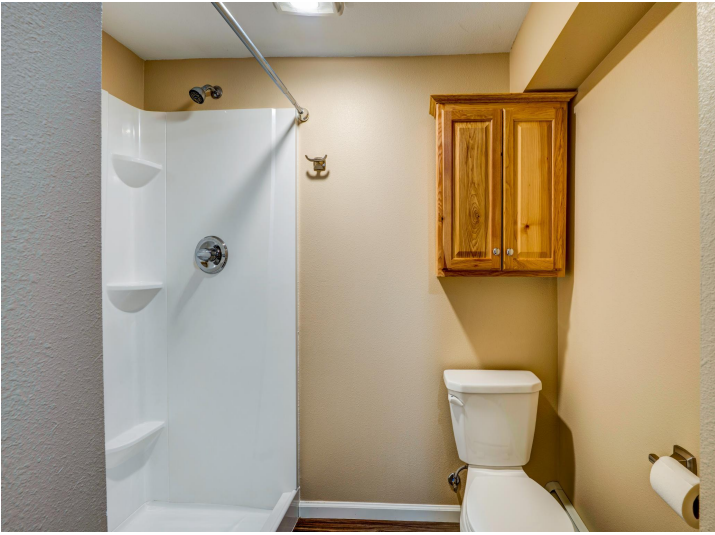
\$279,000
MLS 7038904 Residential
1019 Beltrami Avenue
Bemidji MN 56601



website: www.AffinityRealEstate.com | email: info@affinityrealestate.com | office: 218-237-3333 | fax: 218-237-3377

Affinity
REAL ESTATE INC

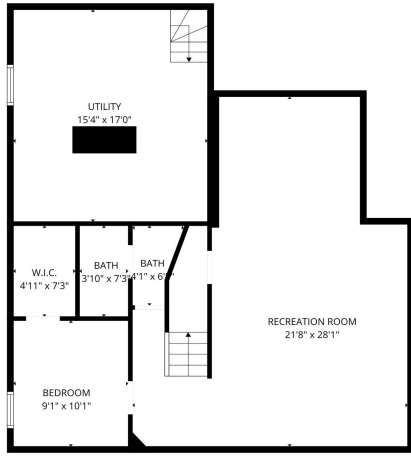
\$279,000
MLS 7038904 Residential
1019 Beltrami Avenue
Bemidji MN 56601



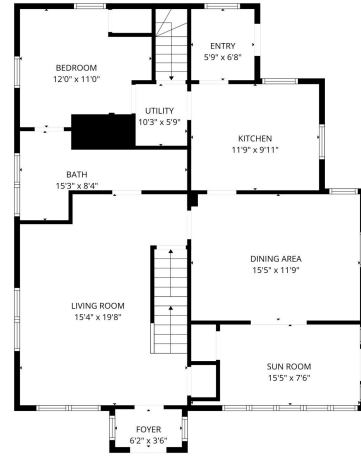
website: www.AffinityRealEstate.com | email: info@affinityrealestate.com | office: 218-237-3333 | fax: 218-237-3377



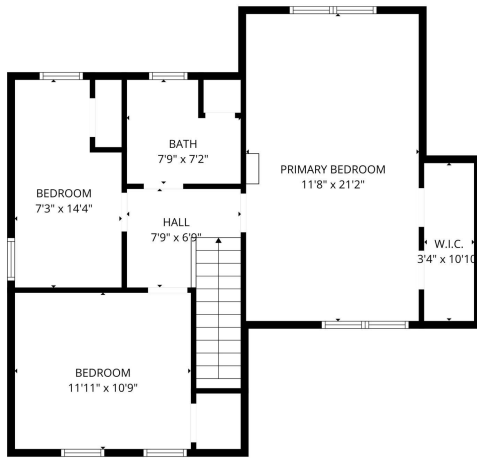
\$279,000
MLS 7038904 Residential
1019 Beltrami Avenue
Bemidji MN 56601



FLOOR PLAN CREATED BY CUBICSCA APP. MEASUREMENTS DEEMED HIGHLY RELIABLE BUT NOT GUARANTEED.



FLOOR PLAN CREATED BY CUBICSCA APP. MEASUREMENTS DEEMED HIGHLY RELIABLE BUT NOT GUARANTEED.



FLOOR PLAN CREATED BY CUBICSCA APP. MEASUREMENTS DEEMED HIGHLY RELIABLE BUT NOT GUARANTEED.



website: www.AffinityRealEstate.com | email: info@affinityrealestate.com | office: 218-237-3333 | fax: 218-237-3377



\$279,000
 MLS 7038904 Residential
 1019 Beltrami Avenue
 Bemidji MN 56601