



MLS 7039047 Lake Home

\$999,900

1,540 sq ft
3 bedrooms
2 baths

1128 Wienzel Point Road
Nisswa MN 56468

Waterfront: Gull

Status: Coming Soon

Description:

Experience peaceful lakeside living in this quaint Upper Gull Lake home nestled on the coveted Wienzel Point. Boasting 100 feet of level, west-facing shoreline, this property offers breathtaking sunset views. Step Inside to a spacious family room featuring tongue-and-groove vaulted & beamed ceilings, warmed by a wood-burning brick fireplace—perfect for cozy gatherings. The home includes three comfortable bedrooms on the main floor, complemented by a vintage kitchen with charming metal cabinets that add character.

Additional highlights include a newer roof and drilled well, and city sewer. The heated garage houses a convenient second ¾ bathroom and laundry area, with a bonus room above, providing extra space for work or play. Whether you're looking for a year-round residence or a relaxing summer retreat, this lakefront gem on Upper Gull Lake is ready to welcome you home. Don't miss your chance to embrace the serene lake lifestyle—schedule your tour today!

Additional Details:

Year Built	1965
Lot Acres	0.034
Lot Dimensions	100x155x92x150
Garage Stalls	2
School District	186
Taxes	\$5,014
Taxes with Assessments	\$5,080
Tax Year	2025

Additional Features:

Basement: Crawl Space **Fuel:** Natural Gas **Garage:** 2 **Heat:** Boiler **Sewer:** City Sewer/Connected **Water:** Drilled **Air Conditioning:** None

Driving Directions:

Hwy 371 N to left on CR 29. Take a left onto Upper Roy Lake Road and a right on Wienzel Point Road to property on right



Listed By:
LPT Realty, LLC.

Affinity Real Estate Inc. participates in the Regional Multiple Listing Service of Minnesota, Inc Broker Reciprocity (sm) program, allowing us to display other broker's listings on our website. All properties are subject to prior sale, change or withdrawal.



Call Affinity Real Estate

218-237-3333

info@affinityrealestate.com



Affinity Real Estate - 600 Park Avenue South - Park Rapids MN 56470



website: www.AffinityRealEstate.com | email: info@affinityrealestate.com | office: 218-237-3333 | fax:218-237-3377

Affinity
REAL ESTATE INC

\$999,900
MLS 7039047 Lake Home
1128 Wienzel Point Road
Nisswa MN 56468



website: www.AffinityRealEstate.com | email: info@affinityrealestate.com | office: 218-237-3333 | fax: 218-237-3377

Affinity
REAL ESTATE INC

\$999,900
MLS 7039047 Lake Home
1128 Wienzel Point Road
Nisswa MN 56468



website: www.AffinityRealEstate.com | email: info@affinityrealestate.com | office: 218-237-3333 | fax:218-237-3377



\$999,900
MLS 7039047 Lake Home
1128 Wienzel Point Road
Nisswa MN 56468



website: www.AffinityRealEstate.com | email: info@affinityrealestate.com | office: 218-237-3333 | fax:218-237-3377



\$999,900
MLS 7039047 Lake Home
1128 Wienzel Point Road
Nisswa MN 56468



website: www.AffinityRealEstate.com | email: info@affinityrealestate.com | office: 218-237-3333 | fax:218-237-3377

Affinity
REAL ESTATE INC

\$999,900
MLS 7039047 Lake Home
1128 Wienzel Point Road
Nisswa MN 56468



website: www.AffinityRealEstate.com | email: info@affinityrealestate.com | office: 218-237-3333 | fax: 218-237-3377

Affinity
REAL ESTATE INC

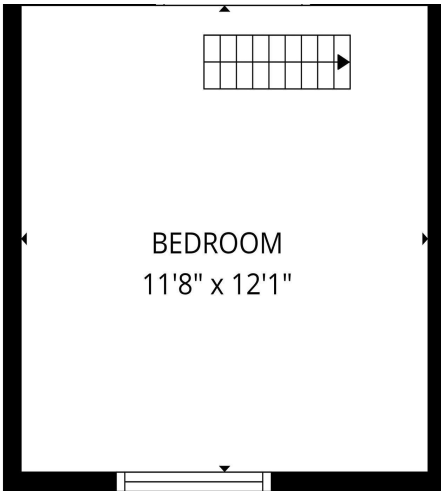
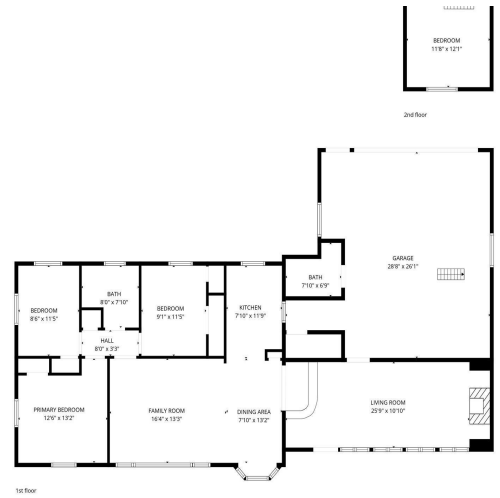
\$999,900
MLS 7039047 Lake Home
1128 Wienzel Point Road
Nisswa MN 56468



website: www.AffinityRealEstate.com | email: info@affinityrealestate.com | office: 218-237-3333 | fax:218-237-3377



\$999,900
MLS 7039047 Lake Home
1128 Wienzel Point Road
Nisswa MN 56468



website: www.AffinityRealEstate.com | email: info@affinityrealestate.com | office: 218-237-3333 | fax: 218-237-3377



\$999,900
 MLS 7039047 Lake Home
 1128 Wienzel Point Road
 Nisswa MN 56468