



MLS 7039069 Residential

\$369,500

2,156 sq ft
3 bedrooms
2 baths

608 Forest View Avenue
Park Rapids MN 56470

Status: Active

Description:

3 Bedroom, 2 bath Park Rapids City home situated on half an acre with lots of yard space. This home has been well maintained and cared for. Enjoy the breezeway connecting the attached garage to the home. (Breezeway is not heated, ducts on floor are from the air exchanger only.) Lots of living space in the full basement with family room. There is also a bathroom and bedroom on the lower level. Outdoor shed in the backyard has a roll door, concrete floor and electricity. Great location to city amenities!

Additional Details:

Year Built	1998
Lot Acres	0.5
Lot Dimensions	192x112.50
Garage Stalls	2
School District	1384
Taxes	\$2,523
Taxes with Assessments	\$2,744
Tax Year	2025

Additional Features:

Fuel: Array **Heat:** Forced Air

Driving Directions:

From Highway 71 and 34 in Park Rapids, go East on 34. Take a Left on Central Ave N. Take A Right On North Street. Take a left on Forest View. House is on Right.



Listed By:
National Realty Guild

Affinity Real Estate Inc. participates in the Regional Multiple Listing Service of Minnesota, Inc Broker Reciprocity (sm) program, allowing us to display other broker's listings on our website. All properties are subject to prior sale, change or withdrawal.



Call Affinity Real Estate

218-237-3333

info@affinityrealestate.com



Affinity Real Estate - 600 Park Avenue South - Park Rapids MN 56470



website: www.AffinityRealEstate.com | email: info@affinityrealestate.com | office: 218-237-3333 | fax:218-237-3377

Affinity
REAL ESTATE INC

\$369,500
MLS 7039069 Residential
608 Forest View Avenue
Park Rapids MN 56470



website: www.AffinityRealEstate.com | email: info@affinityrealestate.com | office: 218-237-3333 | fax: 218-237-3377

Affinity
REAL ESTATE INC

\$369,500
MLS 7039069 Residential
608 Forest View Avenue
Park Rapids MN 56470



website: www.AffinityRealEstate.com | email: info@affinityrealestate.com | office: 218-237-3333 | fax:218-237-3377

Affinity
REAL ESTATE INC

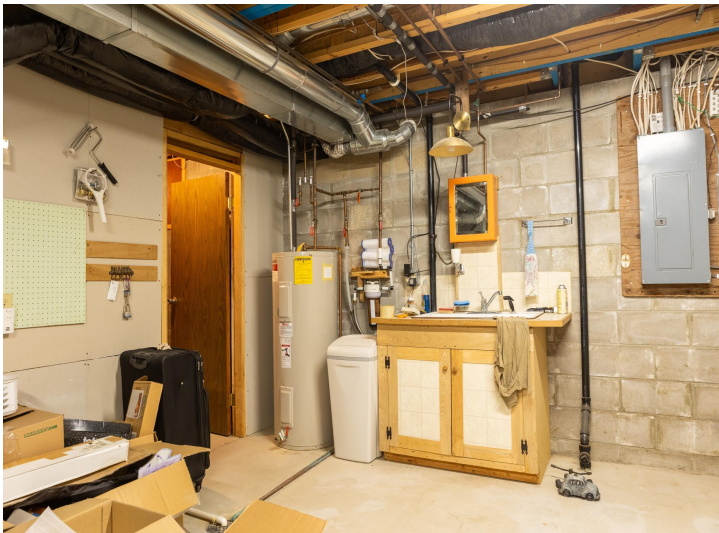
\$369,500
MLS 7039069 Residential
608 Forest View Avenue
Park Rapids MN 56470



website: www.AffinityRealEstate.com | email: info@affinityrealestate.com | office: 218-237-3333 | fax:218-237-3377



\$369,500
MLS 7039069 Residential
608 Forest View Avenue
Park Rapids MN 56470



website: www.AffinityRealEstate.com | email: info@affinityrealestate.com | office: 218-237-3333 | fax:218-237-3377



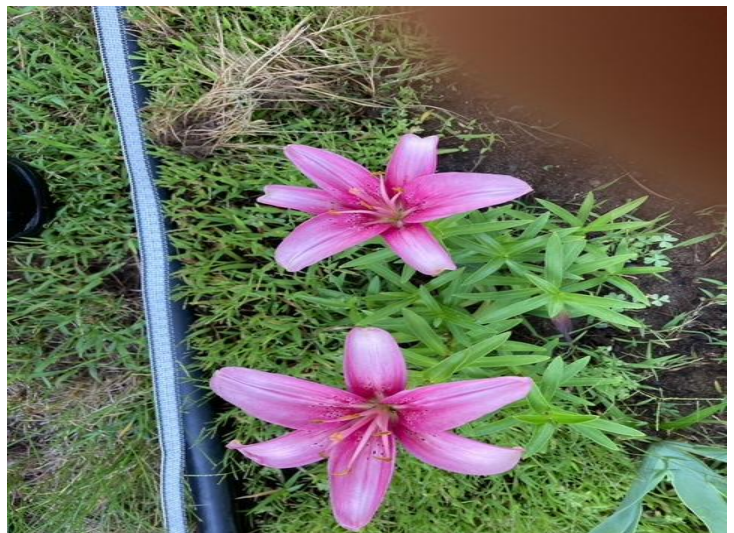
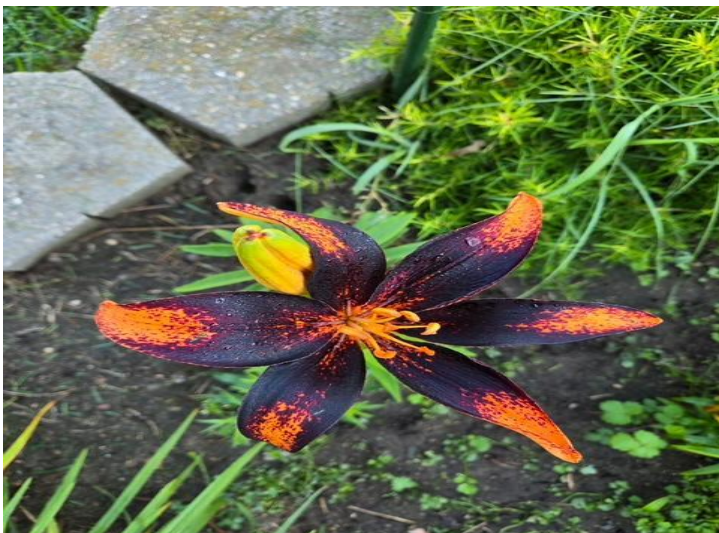
\$369,500
MLS 7039069 Residential
608 Forest View Avenue
Park Rapids MN 56470



website: www.AffinityRealEstate.com | email: info@affinityrealestate.com | office: 218-237-3333 | fax:218-237-3377



\$369,500
MLS 7039069 Residential
608 Forest View Avenue
Park Rapids MN 56470



website: www.AffinityRealEstate.com | email: info@affinityrealestate.com | office: 218-237-3333 | fax:218-237-3377



\$369,500
MLS 7039069 Residential
608 Forest View Avenue
Park Rapids MN 56470



website: www.AffinityRealEstate.com | email: info@affinityrealestate.com | office: 218-237-3333 | fax:218-237-3377



\$369,500
MLS 7039069 Residential
608 Forest View Avenue
Park Rapids MN 56470