



MLS 7039080 Residential

\$799,900

2,755 sq ft
5 bedrooms
3 baths

16296 Tower Drive
Brainerd MN 56401

Status: Active

Description:

Welcome to your dream home offering expansive river views in the perfect location for convenience in the Ahren's Hill neighborhood. Conveniently located near the hospital, schools and Brainerd/Baxter. This 5-bedroom, 3-bathroom residence boasts over 2,600 square feet of luxurious living space, all meticulously remodeled from top to bottom by an unmatched builder renowned for their attention to detail.

As you step inside, you'll immediately be captivated by the expansive open-concept layout, featuring gorgeous hardwood floors throughout the main level. The heart of the home is the beautifully appointed kitchen, complete with granite countertops, custom cabinetry, and an innovative coffee bar equipped with an insta-hot water system. It's the perfect space to gather with family and friends.

With three spacious bedrooms on the main floor, including a serene master suite, this home provides ample space for relaxation and privacy. The lower level is an entertainer's paradise, featuring a stylish wet bar complete with a beverage cooler and microwave, along with a cozy family room highlighted by one of the two gas fireplaces.

Step outside onto the wrap-around composite decking and take in the breathtaking views of the river – the ideal backdrop for your morning coffee or evening gatherings. This outdoor space is perfect for entertaining or simply enjoying nature. The property also boasts a large 4+ car garage that is heated, features a drain, and is fully finished, providing ample space for cars and the flexibility to store or park all your recreational toys inside or on the paved expansive driveway. With a focus on modern comfort and elegance, this home is a rare find that blends quality craftsmanship with stunning aesthetics. Don't miss the opportunity to make this exceptional property your own!

Additional Details:

Year Built	1979
Lot Acres	0.61
Lot Dimensions	See GIS
Garage Stalls	4
School District	896
Taxes	\$1,647
Taxes with Assessments	\$1,672
Tax Year	2025

Listed By: **Broker Reciprocity**
 Equal Housing Opportunity
 Affinity Real Estate Inc. participates in the Regional Multiple Listing Service of Minnesota, Inc Broker Reciprocity (sm) program, allowing us to display other broker's listings on our website. All properties are subject to prior sale, change or withdrawal.



Call Affinity Real Estate

218-237-3333 Garage: 4 Heat:

info@affinityrealestate.com Air Conditioning: Central Air



Affinity Real Estate - 600 Park Avenue South - Park Rapids MN 56470



website: www.AffinityRealEstate.com | email: info@affinityrealestate.com | office: 218-237-3333 | fax:218-237-3377



\$799,900
MLS 7039080 Residential
16296 Tower Drive
Brainerd MN 56401



website: www.AffinityRealEstate.com | email: info@affinityrealestate.com | office: 218-237-3333 | fax:218-237-3377



\$799,900
MLS 7039080 Residential
16296 Tower Drive
Brainerd MN 56401



website: www.AffinityRealEstate.com | email: info@affinityrealestate.com | office: 218-237-3333 | fax:218-237-3377



\$799,900
MLS 7039080 Residential
16296 Tower Drive
Brainerd MN 56401



website: www.AffinityRealEstate.com | email: info@affinityrealestate.com | office: 218-237-3333 | fax: 218-237-3377

Affinity
REAL ESTATE INC

\$799,900
MLS 7039080 Residential
16296 Tower Drive
Brainerd MN 56401



website: www.AffinityRealEstate.com | email: info@affinityrealestate.com | office: 218-237-3333 | fax: 218-237-3377

Affinity
REAL ESTATE INC

\$799,900
MLS 7039080 Residential
16296 Tower Drive
Brainerd MN 56401



website: www.AffinityRealEstate.com | email: info@affinityrealestate.com | office: 218-237-3333 | fax:218-237-3377

Affinity
REAL ESTATE INC

\$799,900
MLS 7039080 Residential
16296 Tower Drive
Brainerd MN 56401



website: www.AffinityRealEstate.com | email: info@affinityrealestate.com | office: 218-237-3333 | fax:218-237-3377

Affinity
REAL ESTATE INC

\$799,900
MLS 7039080 Residential
16296 Tower Drive
Brainerd MN 56401



website: www.AffinityRealEstate.com | email: info@affinityrealestate.com | office: 218-237-3333 | fax: 218-237-3377

Affinity
REAL ESTATE INC

\$799,900
MLS 7039080 Residential
16296 Tower Drive
Brainerd MN 56401



website: www.AffinityRealEstate.com | email: info@affinityrealestate.com | office: 218-237-3333 | fax: 218-237-3377

Affinity
REAL ESTATE INC

\$799,900
MLS 7039080 Residential
16296 Tower Drive
Brainerd MN 56401



website: www.AffinityRealEstate.com | email: info@affinityrealestate.com | office: 218-237-3333 | fax:218-237-3377

Affinity
REAL ESTATE INC

\$799,900
MLS 7039080 Residential
16296 Tower Drive
Brainerd MN 56401



website: www.AffinityRealEstate.com | email: info@affinityrealestate.com | office: 218-237-3333 | fax:218-237-3377

Affinity
REAL ESTATE INC

\$799,900
MLS 7039080 Residential
16296 Tower Drive
Brainerd MN 56401



website: www.AffinityRealEstate.com | email: info@affinityrealestate.com | office: 218-237-3333 | fax:218-237-3377



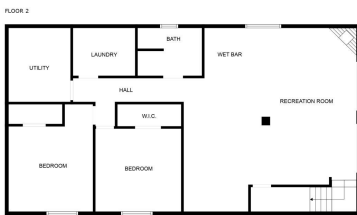
\$799,900
MLS 7039080 Residential
16296 Tower Drive
Brainerd MN 56401



website: www.AffinityRealEstate.com | email: info@affinityrealestate.com | office: 218-237-3333 | fax:218-237-3377



\$799,900
MLS 7039080 Residential
16296 Tower Drive
Brainerd MN 56401



FLOOR 1

FLOOR PLAN CREATED BY CUBICASA APP. MEASUREMENTS DEEMED HIGHLY RELIABLE BUT NOT GUARANTEED.

website: www.AffinityRealEstate.com | email: info@affinityrealestate.com | office: 218-237-3333 | fax:218-237-3377



\$799,900
MLS 7039080 Residential
16296 Tower Drive
Brainerd MN 56401