



MLS 7039293 Residential

\$379,900

1,580 sq ft
2 bedrooms
2 baths

34235 Moose Drive
Laporte MN 56461

Status: Active

Description:

Discover your dream retreat at this beautifully maintained, year-round home on Beauty Lake, featuring 2 spacious bedrooms and 2 baths, along with an impressive 200 feet of lakeshore. Picture yourself enjoying cozy evenings by the fireplace while soaking in the stunning lake views. Ideally located just minutes from the enchanting Itasca State Park, this property is truly a nature lover's paradise. Set on over 2.5 acres of serene mixed hardwoods, the property is graced with an abundance of lady slippers that enhance its natural beauty, providing a tranquil escape from the hustle and bustle of everyday life. With breathtaking vistas all around, you can start your lake life adventure immediately, as the sale includes all furniture, minus a few personal items. The generous 24 x 32 garage offers plenty of room for your water toys and hunting gear, ensuring you're always ready for your next outdoor adventure. Plus, you'll enjoy exclusive 1/29th shared ownership of outlots A, B, and C, which encompass approximately 97 acres of untouched beauty surrounding this desirable lakeshore community. This shared ownership gives you direct access to breathtaking county lands, perfect for hiking, exploring, or simply basking in the wonders of nature. Don't miss your chance to own this incredible lakeshore getaway!

Additional Details:

Year Built	2008
Lot Acres	2.52
Lot Dimensions	200x571x203x523
Garage Stalls	2
School District	1384
Taxes	\$2,198
Taxes with Assessments	\$2,198
Tax Year	2025

Additional Features:

Basement: Block **Fuel:** Array **Garage:** 2 **Heat:** Forced Air **Sewer:** Private Sewer **Water:** 4-Inch Submersible, Drilled **Air Conditioning:** Wall Unit(s)

Driving Directions:

From 34/71 in Park Rapids, North on 71 to Moose Drive. Make a right on Moose Drive (keep Affinity in the Y on State Moose Dr.) to



Listed By:
Wolff & Simon Real Estate



Call Affinity Real Estate

218-237-3333

info@affinityrealestate.com



Affinity Real Estate - 600 Park Avenue South - Park Rapids MN 56470



website: www.AffinityRealEstate.com | email: info@affinityrealestate.com | office: 218-237-3333 | fax:218-237-3377

Affinity
REAL ESTATE INC

\$379,900
MLS 7039293 Residential
34235 Moose Drive
Laporte MN 56461



website: www.AffinityRealEstate.com | email: info@affinityrealestate.com | office: 218-237-3333 | fax: 218-237-3377

Affinity
REAL ESTATE INC

\$379,900
MLS 7039293 Residential
34235 Moose Drive
Laporte MN 56461



website: www.AffinityRealEstate.com | email: info@affinityrealestate.com | office: 218-237-3333 | fax:218-237-3377

Affinity
REAL ESTATE INC

\$379,900
MLS 7039293 Residential
34235 Moose Drive
Laporte MN 56461



website: www.AffinityRealEstate.com | email: info@affinityrealestate.com | office: 218-237-3333 | fax:218-237-3377

Affinity
REAL ESTATE INC

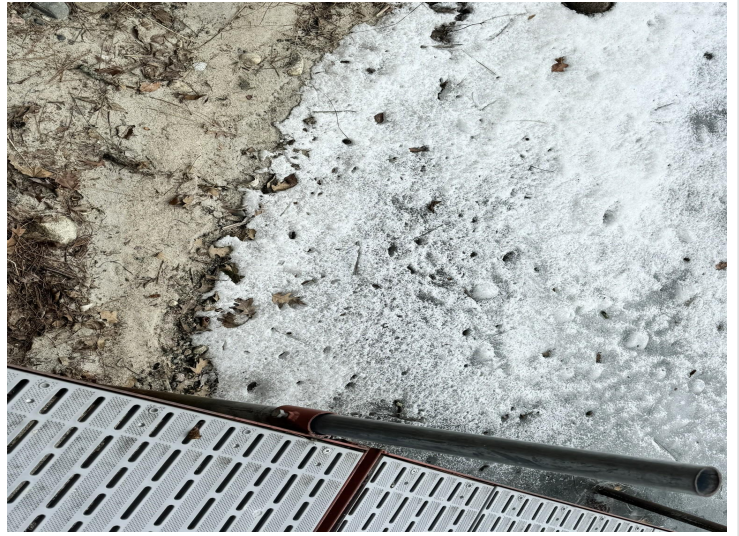
\$379,900
MLS 7039293 Residential
34235 Moose Drive
Laporte MN 56461



website: www.AffinityRealEstate.com | email: info@affinityrealestate.com | office: 218-237-3333 | fax:218-237-3377



\$379,900
MLS 7039293 Residential
34235 Moose Drive
Laporte MN 56461



website: www.AffinityRealEstate.com | email: info@affinityrealestate.com | office: 218-237-3333 | fax: 218-237-3377

Affinity
REAL ESTATE INC

\$379,900
MLS 7039293 Residential
34235 Moose Drive
Laporte MN 56461



website: www.AffinityRealEstate.com | email: info@affinityrealestate.com | office: 218-237-3333 | fax:218-237-3377



\$379,900
MLS 7039293 Residential
34235 Moose Drive
Laporte MN 56461

website: www.AffinityRealEstate.com | email: info@affinityrealestate.com | office: 218-237-3333 | fax:218-237-3377



\$379,900
MLS 7039293 Residential
34235 Moose Drive
Laporte MN 56461