



MLS 7039396 Residential

\$279,900

1,380 sq ft
3 bedrooms
1 baths

21690 County Road 28
Deerwood MN 56444

Status: Coming Soon

Description:

This 3 bedroom home is located in the heart of Cuyuna Country just outside of town south of Crosby and north of Deerwood! Main level living with 3-bedrooms, large living room, main floor laundry hookups and lower-level family room. Large yard with 2.3 acres, ample garage space with a 42x30 pole shed, 24x22 garage and garden sheds. Hiking, biking, fishing, boating and top of the line healthcare all out your backdoor!

Additional Details:

Year Built	1950
Lot Acres	2.33
Lot Dimensions	367x440x271x148
Garage Stalls	6
School District	182
Taxes	\$954
Taxes with Assessments	\$954
Tax Year	2025

Additional Features:

Basement: Block, Full, Partially Finished **Fuel:** Natural Gas **Garage:** 6 **Heat:** Forced Air **Sewer:** Tank with Drainage Field **Water:** Drilled **Air Conditioning:** None

Driving Directions:

21690 County Road 28



Listed By:
RE/MAX Results - Nisswa

Affinity Real Estate Inc. participates in the Regional Multiple Listing Service of Minnesota, Inc Broker Reciprocity (sm) program, allowing us to display other broker's listings on our website. All properties are subject to prior sale, change or withdrawal.



Call Affinity Real Estate

218-237-3333

info@affinityrealestate.com



Affinity Real Estate - 600 Park Avenue South - Park Rapids MN 56470



website: www.AffinityRealEstate.com | email: info@affinityrealestate.com | office: 218-237-3333 | fax:218-237-3377



\$279,900
MLS 7039396 Residential
21690 County Road 28
Deerwood MN 56444



website: www.AffinityRealEstate.com | email: info@affinityrealestate.com | office: 218-237-3333 | fax: 218-237-3377

Affinity
REAL ESTATE INC

\$279,900
MLS 7039396 Residential
21690 County Road 28
Deerwood MN 56444



website: www.AffinityRealEstate.com | email: info@affinityrealestate.com | office: 218-237-3333 | fax: 218-237-3377

Affinity
REAL ESTATE INC

\$279,900
MLS 7039396 Residential
21690 County Road 28
Deerwood MN 56444



website: www.AffinityRealEstate.com | email: info@affinityrealestate.com | office: 218-237-3333 | fax:218-237-3377

Affinity
REAL ESTATE INC

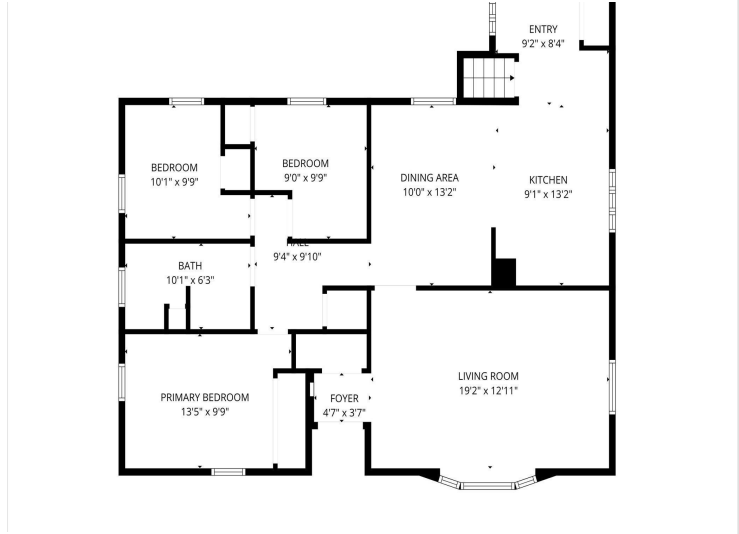
\$279,900
MLS 7039396 Residential
21690 County Road 28
Deerwood MN 56444



website: www.AffinityRealEstate.com | email: info@affinityrealestate.com | office: 218-237-3333 | fax:218-237-3377



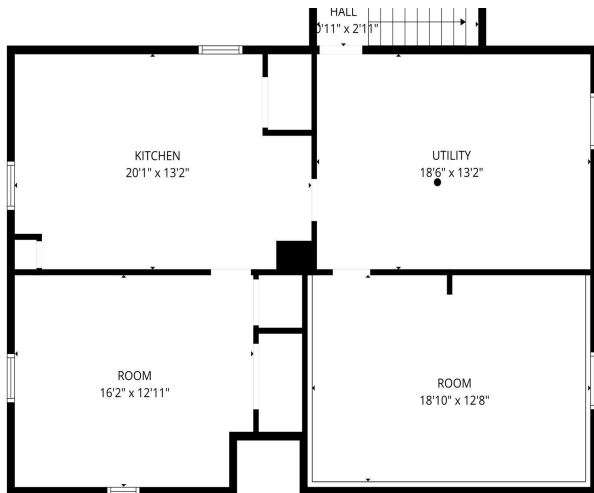
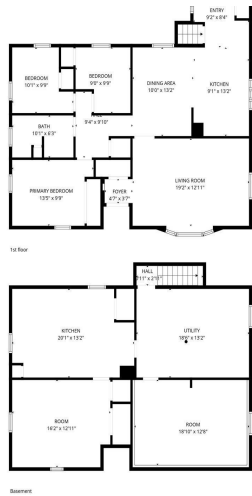
\$279,900
MLS 7039396 Residential
21690 County Road 28
Deerwood MN 56444



website: www.AffinityRealEstate.com | email: info@affinityrealestate.com | office: 218-237-3333 | fax:218-237-3377



\$279,900
MLS 7039396 Residential
21690 County Road 28
Deerwood MN 56444



website: www.AffinityRealEstate.com | email: info@affinityrealestate.com | office: 218-237-3333 | fax: 218-237-3377



\$279,900
 MLS 7039396 Residential
 21690 County Road 28
 Deerwood MN 56444