



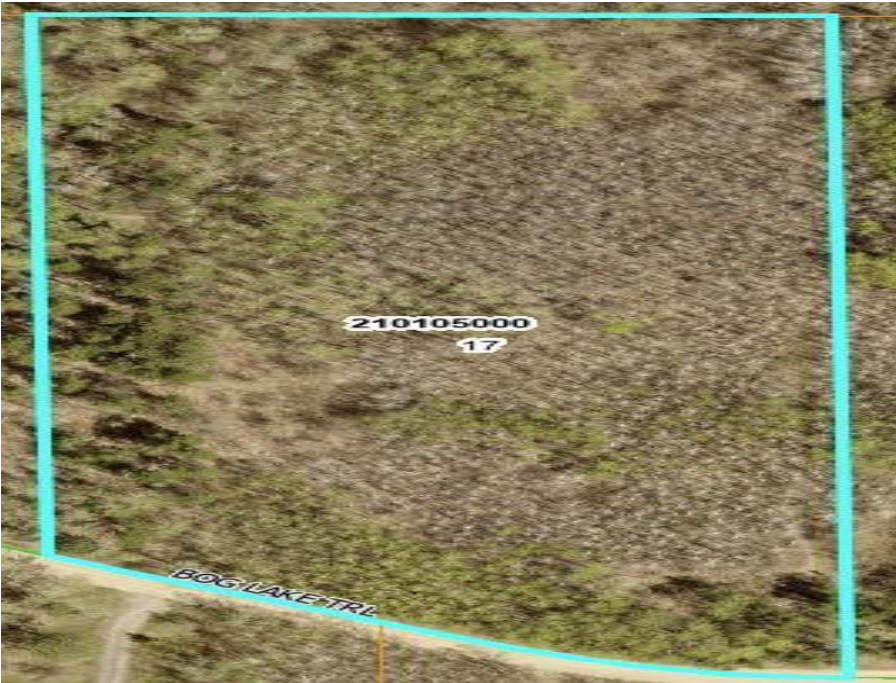
MLS 7039565 Land

**\$74,900**

5.3 Acres  
Raw Land

TBD 10 Bog Lake Trail  
Osage MN 56570

Status: Active



**Description:**

Trade the noise for the rustle of pines. Nestled just north of Osage, MN, this 5.3-acre lot on Bog Lake Trail offers the perfect canvas for your dream cabin, year-round home, or weekend basecamp. Whether you're looking to disappear into the woods or build a legacy for your family, this property delivers the ultimate Up North experience.

**Additional Details:**

Lot Acres	5.3
Lot Dimensions	320x770x629
School District	1384
Taxes	\$54
Taxes with Assessments	\$54
Tax Year	2025

**Additional Features:**

**Driving Directions:**

From 34/71 in Park Rapids, West on 34 to Osage. Take a right onto County 48 heading North, take a left on Bog Lake Trail to property on right.



Listed By:  
Wolff & Simon Real Estate

Affinity Real Estate Inc. participates in the Regional Multiple Listing Service of Minnesota, Inc Broker Reciprocity (sm) program, allowing us to display other broker's listings on our website. All properties are subject to prior sale, change or withdrawal.



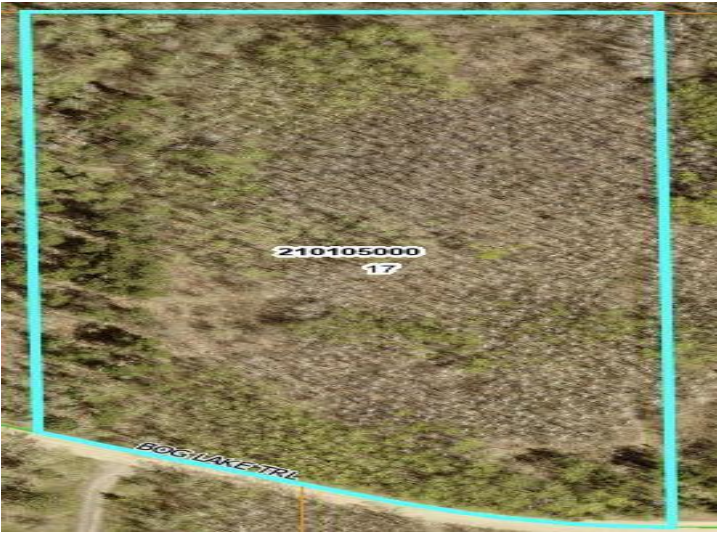
Call Affinity Real Estate

**218-237-3333**

[info@affinityrealestate.com](mailto:info@affinityrealestate.com)



Affinity Real Estate - 600 Park Avenue South - Park Rapids MN 56470



website: [www.AffinityRealEstate.com](http://www.AffinityRealEstate.com) | email: [info@affinityrealestate.com](mailto:info@affinityrealestate.com) | office: 218-237-3333 | fax: 218-237-3377



**\$74,900**  
MLS 7039565 Land  
TBD 10 Bog Lake Trail  
Osage MN 56570

website: [www.AffinityRealEstate.com](http://www.AffinityRealEstate.com) | email: [info@affinityrealestate.com](mailto:info@affinityrealestate.com) | office: 218-237-3333 | fax:218-237-3377



**\$74,900**  
MLS 7039565 Land  
TBD 10 Bog Lake Trail  
Osage MN 56570