



MLS 7039591 Residential

\$425,000

1,430 sq ft
3 bedrooms
2 baths

Lot 6 See Gull Cove
Brainerd MN 56401

Status: Active

Description:

Perfectly situated between Baxter and Nisswa, this home offers the best of convenience and privacy. Nestled on a 3.3 acre lot surrounded by towering pines and a pond. You'll enjoy the serene, wooded setting while still being close to town. Inside you'll find 3 bedrooms, 2 bathrooms, and a functional open layout with all living facilities on one level. The kitchen features stainless steel appliances and granite countertops, while the primary suite includes a private bath with a walk-in shower. Additional highlights include a two-stall garage, no internal or external stairs, and a low-maintenance exterior. A wonderful combination of comfort, style, and location! Model will be starting soon, there is still time to pick out your selections!

Additional Details:

Year Built	2026
Lot Acres	3.32
Lot Dimensions	Irregular
Garage Stalls	2
School District	896
Taxes	\$220
Taxes with Assessments	\$220
Tax Year	2024

Additional Features:

Basement: None **Fuel:** Array **Garage:** 2 **Heat:** Forced Air **Sewer:** Private Sewer, Tank with Drainage Field **Water:** Private, Well **Air Conditioning:** Central Air

Driving Directions:

From Baxter, take Hwy 371 North towards Nisswa. Turn left onto See Gull Road. Take a right onto See Gull Cove, the property will be in the cul de sac.



Listed By:
Counselor Realty Brainerd Lakes

Affinity Real Estate Inc. participates in the Regional Multiple Listing Service of Minnesota, Inc Broker Reciprocity (sm) program, allowing us to display other broker's listings on our website. All properties are subject to prior sale, change or withdrawal.



Call Affinity Real Estate

218-237-3333

info@affinityrealestate.com



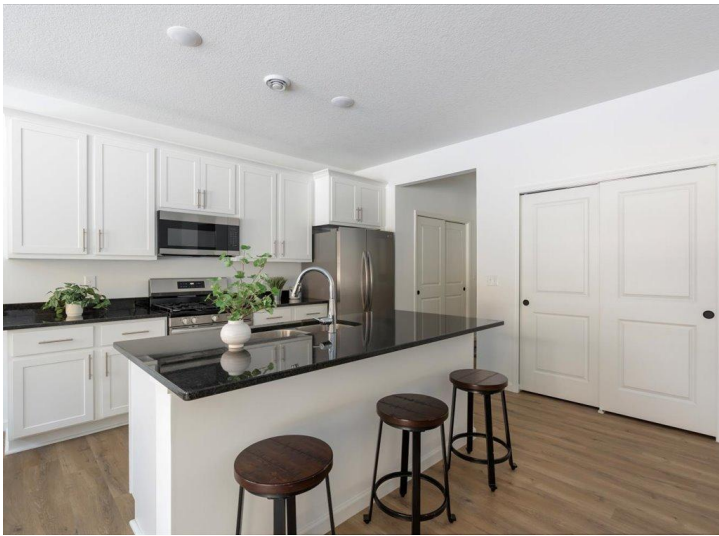
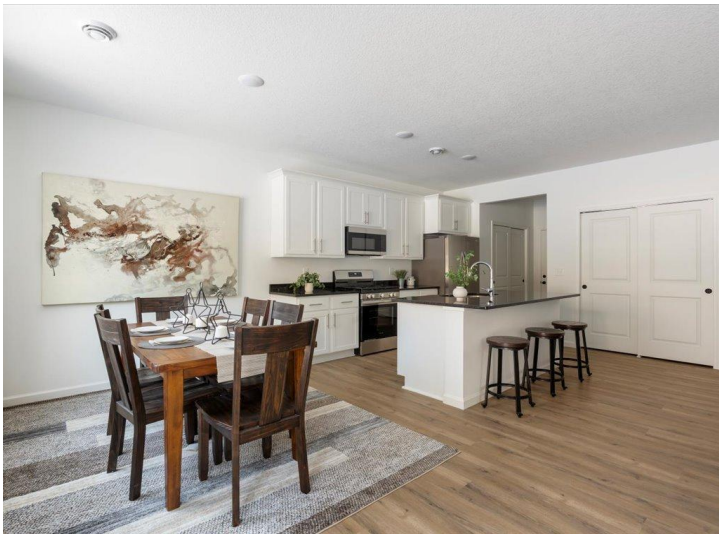
Affinity Real Estate - 600 Park Avenue South - Park Rapids MN 56470



website: www.AffinityRealEstate.com | email: info@affinityrealestate.com | office: 218-237-3333 | fax:218-237-3377



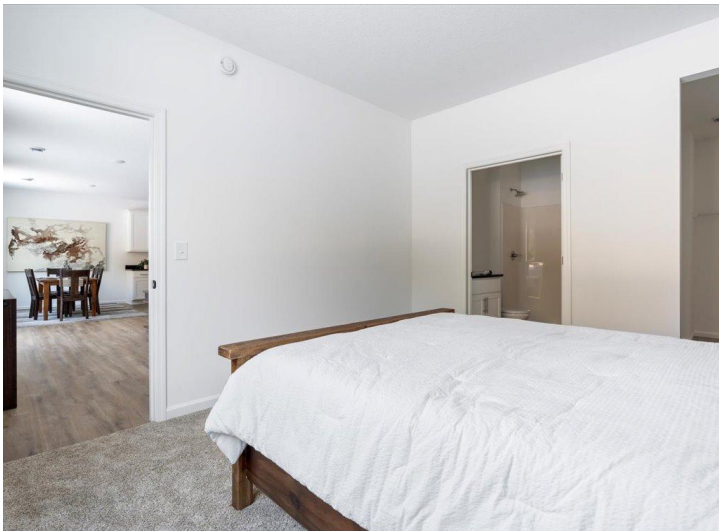
\$425,000
MLS 7039591 Residential
Lot 6 See Gull Cove
Brainerd MN 56401



website: www.AffinityRealEstate.com | email: info@affinityrealestate.com | office: 218-237-3333 | fax: 218-237-3377

Affinity
REAL ESTATE INC

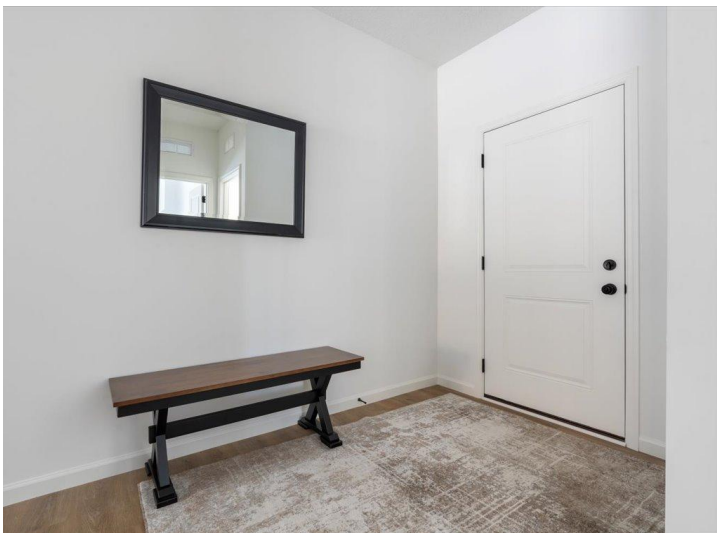
\$425,000
MLS 7039591 Residential
Lot 6 See Gull Cove
Brainerd MN 56401



website: www.AffinityRealEstate.com | email: info@affinityrealestate.com | office: 218-237-3333 | fax:218-237-3377



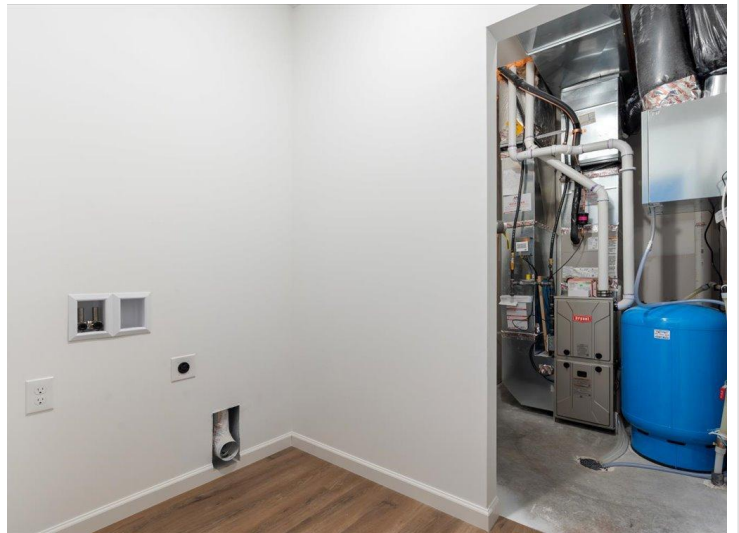
\$425,000
MLS 7039591 Residential
Lot 6 See Gull Cove
Brainerd MN 56401



website: www.AffinityRealEstate.com | email: info@affinityrealestate.com | office: 218-237-3333 | fax: 218-237-3377

Affinity
REAL ESTATE INC

\$425,000
MLS 7039591 Residential
Lot 6 See Gull Cove
Brainerd MN 56401



website: www.AffinityRealEstate.com | email: info@affinityrealestate.com | office: 218-237-3333 | fax:218-237-3377



\$425,000
MLS 7039591 Residential
Lot 6 See Gull Cove
Brainerd MN 56401



website: www.AffinityRealEstate.com | email: info@affinityrealestate.com | office: 218-237-3333 | fax:218-237-3377

Affinity
REAL ESTATE INC

\$425,000
MLS 7039591 Residential
Lot 6 See Gull Cove
Brainerd MN 56401



website: www.AffinityRealEstate.com | email: info@affinityrealestate.com | office: 218-237-3333 | fax:218-237-3377



\$425,000
MLS 7039591 Residential
Lot 6 See Gull Cove
Brainerd MN 56401