



MLS 7039774 Residential

\$311,000

1,447 sq ft
4 bedrooms
1 baths

38213 State Highway 87
Frazee MN 56544

Status: Active

Description:

Rural property on 3.28 surveyed acres featuring an updated 4-bedroom, 1-bath, 1.5-story home. The spacious yard includes mature crab apple trees, wild grapes, and a large garden area, with abundant wildlife throughout the property. Outbuildings include a large detached garage (32x34), storage sheds (12x19 & 12x16), and a steel shop currently used as a chicken coop with wood heat capability (14x44), and a large white silo. Enjoy a dedicated campfire area and plenty of room for outdoor living. Conveniently located just 5 miles east of Frazee, 15 miles from Detroit Lakes, and 14 miles from Perham. Ideal set up for a hobby farm or family home.

Additional Details:

Year Built	1904
Lot Acres	3.28
Lot Dimensions	3.28 acres
Garage Stalls	2
School District	1106
Taxes	\$666
Taxes with Assessments	\$666
Tax Year	2025

Additional Features:

Basement: Partial, Storage Space, Unfinished **Fuel:** Array **Garage:** 2 **Heat:** Forced Air **Sewer:** Private Sewer, Tank with Drainage Field
Water: Drilled, Private **Air Conditioning:** None

Driving Directions:

From Frazee go 5 miles East on St. Hwy 87 for 5 miles to the property on the right side.



Listed By:
Counselor Realty Detroit Lakes

Affinity Real Estate Inc. participates in the Regional Multiple Listing Service of Minnesota, Inc Broker Reciprocity (sm) program, allowing us to display other broker's listings on our website. All properties are subject to prior sale, change or withdrawal.



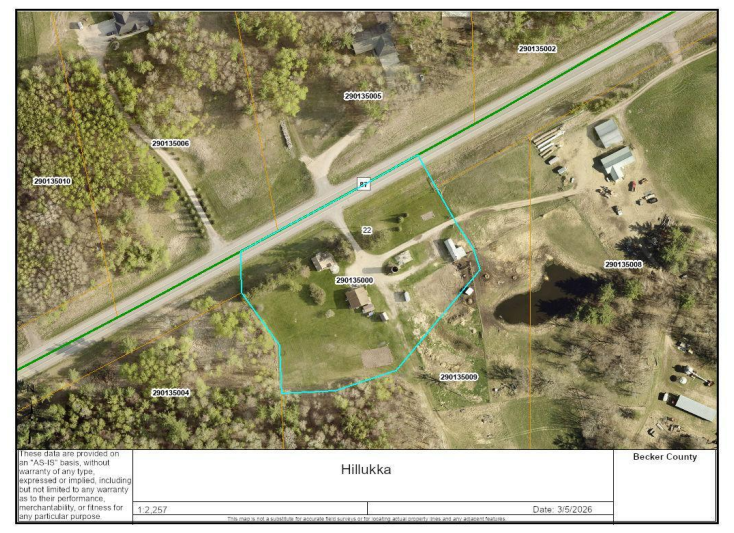
Call Affinity Real Estate

218-237-3333

info@affinityrealestate.com



Affinity Real Estate - 600 Park Avenue South - Park Rapids MN 56470



website: www.AffinityRealEstate.com | email: info@affinityrealestate.com | office: 218-237-3333 | fax: 218-237-3377



\$311,000
 MLS 7039774 Residential
 38213 State Highway 87
 Frazee MN 56544



website: www.AffinityRealEstate.com | email: info@affinityrealestate.com | office: 218-237-3333 | fax:218-237-3377



\$311,000
MLS 7039774 Residential
38213 State Highway 87
Frazee MN 56544



website: www.AffinityRealEstate.com | email: info@affinityrealestate.com | office: 218-237-3333 | fax:218-237-3377



\$311,000
MLS 7039774 Residential
38213 State Highway 87
Frazee MN 56544



website: www.AffinityRealEstate.com | email: info@affinityrealestate.com | office: 218-237-3333 | fax: 218-237-3377

Affinity
REAL ESTATE INC

\$311,000
MLS 7039774 Residential
38213 State Highway 87
Frazee MN 56544



website: www.AffinityRealEstate.com | email: info@affinityrealestate.com | office: 218-237-3333 | fax:218-237-3377

Affinity
REAL ESTATE INC

\$311,000
MLS 7039774 Residential
38213 State Highway 87
Frazee MN 56544



website: www.AffinityRealEstate.com | email: info@affinityrealestate.com | office: 218-237-3333 | fax:218-237-3377



\$311,000
MLS 7039774 Residential
38213 State Highway 87
Frazee MN 56544



website: www.AffinityRealEstate.com | email: info@affinityrealestate.com | office: 218-237-3333 | fax:218-237-3377

Affinity
REAL ESTATE INC

\$311,000
MLS 7039774 Residential
38213 State Highway 87
Frazee MN 56544



website: www.AffinityRealEstate.com | email: info@affinityrealestate.com | office: 218-237-3333 | fax:218-237-3377



\$311,000
MLS 7039774 Residential
38213 State Highway 87
Frazee MN 56544



website: www.AffinityRealEstate.com | email: info@affinityrealestate.com | office: 218-237-3333 | fax:218-237-3377



\$311,000
MLS 7039774 Residential
38213 State Highway 87
Frazee MN 56544



website: www.AffinityRealEstate.com | email: info@affinityrealestate.com | office: 218-237-3333 | fax: 218-237-3377



\$311,000
 MLS 7039774 Residential
 38213 State Highway 87
 Frazee MN 56544