



MLS 7039776 Land

\$44,900

0.46 Acres
Raw Land

TBD Clearwater Road
Brainerd MN 56425

Status: Active

Description:

Hard-to-find wooded lot in a highly desirable Baxter location! This level parcel is loaded with mature trees, giving you the perfect blend of privacy and build-ready convenience. Located just minutes from Baxter's top shopping, dining, and everyday amenities—plus outdoor recreation right at your fingertips. Spend your summers at nearby Whipple Lake with its public beach, boat launch, playground, and picnic areas, or explore White Sand Lake and Red Sand Lake just minutes away. Opportunities like this don't come around often in Baxter—secure your spot and start building your dream home today before it's gone! Will also build to suit.

Additional Details:

Lot Acres	0.46
Lot Dimensions	100x200
School District	896
Taxes	\$264
Taxes with Assessments	\$264
Tax Year	2025

Additional Features:

Driving Directions:

From Brainerd - 210 W - Right on Memorywood Dr - Follow to end - Left on Clearwater - Property is on the Left



Listed By:
NextHome Horizons

Affinity Real Estate Inc. participates in the Regional Multiple Listing Service of Minnesota, Inc Broker Reciprocity (sm) program, allowing us to display other broker's listings on our website. All properties are subject to prior sale, change or withdrawal.



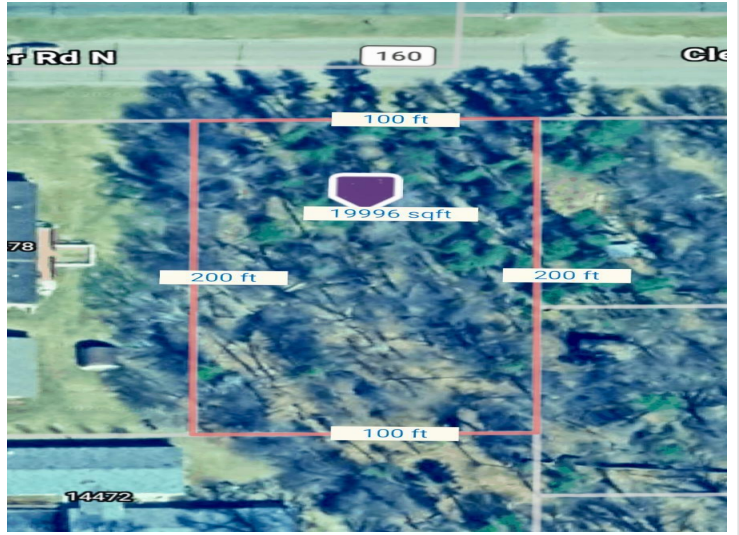
Call Affinity Real Estate

218-237-3333

info@affinityrealestate.com



Affinity Real Estate - 600 Park Avenue South - Park Rapids MN 56470



website: www.AffinityRealEstate.com | email: info@affinityrealestate.com | office: 218-237-3333 | fax:218-237-3377



\$44,900
MLS 7039776 Land
TBD Clearwater Road
Brainerd MN 56425