



MLS 7040771 Residential

\$399,000

1,344 sq ft
4 bedrooms
3 baths

22901 240th Street
Nevis MN 56467

Status: Active

Description:

Discover a true hidden gem that seamlessly combines charm and functionality! This unique property features a delightful main house and a spacious workshop, perfect for a variety of uses. With a generous 4-bedroom, 3-bathroom layout, it's ideal for families or hosting guests. Set on a picturesque 15-acre lot, you'll find a beautiful mix of wooded areas and open fields—perfect for your dream projects. The nearly fully fenced property includes a paddock adjacent to the barn, offering opportunities for animals, gardening, or outdoor activities. Plus, most furnishings in the house and a large air compressor in the workshop are included, making this property move-in ready! Whether you're an investor seeking a promising project or a buyer looking to create your personal oasis, this property is a blank canvas just waiting for your vision. Its adaptable layout and sprawling grounds present the ideal setting for a private residence or an income-generating venture. Surrounded by excellent hunting and fishing opportunities and just minutes away from downtown Park Rapids, you can enjoy delightful dining and unique shopping experiences. Don't let this rare opportunity slip away! Schedule your showing today and take the first step toward owning your own slice of paradise!

Additional Details:

| | |
|------------------------|-----------------|
| Year Built | 2006 |
| Lot Acres | 15 |
| Lot Dimensions | 990x660x990x660 |
| Garage Stalls | 3 |
| School District | 1380 |
| Taxes | \$3,082 |
| Taxes with Assessments | \$3,082 |
| Tax Year | 2025 |

Additional Features:

Fuel: Array **Heat:** Boiler, Hot Water, Wood Stove

Driving Directions:

From Hwy's. 71/34 in Park Rapids. East on Hwy 34. Left onto 226. Right onto County 50. Right onto County 40. Left onto 225th Ave. Right onto 240th St to the property on the right.



Listed By:
Coldwell Banker Realty

Affinity Real Estate Inc. participates in the Regional Multiple Listing Service of Minnesota, Inc Broker Reciprocity (sm) program, allowing us to display other broker's listings on our website. All properties are subject to prior sale, change or withdrawal.



Call Affinity Real Estate

218-237-3333

info@affinityrealestate.com



Affinity Real Estate - 600 Park Avenue South - Park Rapids MN 56470



website: www.AffinityRealEstate.com | email: info@affinityrealestate.com | office: 218-237-3333 | fax:218-237-3377

Affinity
REAL ESTATE INC

\$399,000
MLS 7040771 Residential
22901 240th Street
Nevis MN 56467



website: www.AffinityRealEstate.com | email: info@affinityrealestate.com | office: 218-237-3333 | fax: 218-237-3377

Affinity
REAL ESTATE INC

\$399,000
MLS 7040771 Residential
22901 240th Street
Nevis MN 56467



website: www.AffinityRealEstate.com | email: info@affinityrealestate.com | office: 218-237-3333 | fax:218-237-3377



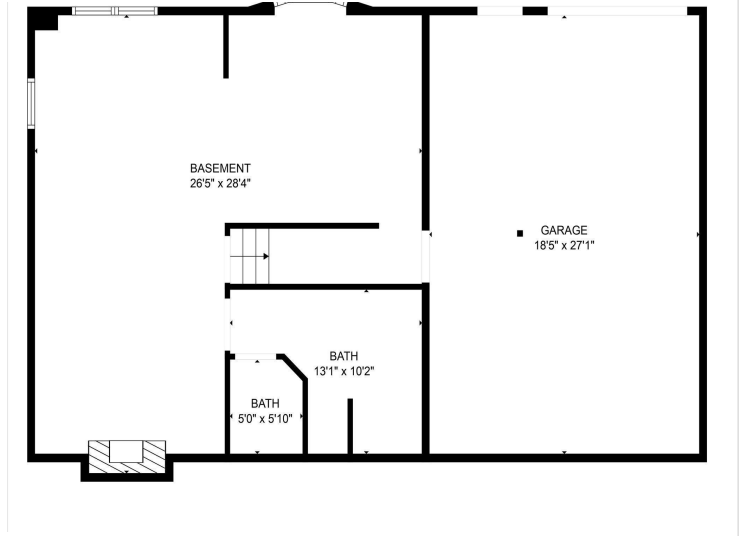
\$399,000
MLS 7040771 Residential
22901 240th Street
Nevis MN 56467



website: www.AffinityRealEstate.com | email: info@affinityrealestate.com | office: 218-237-3333 | fax:218-237-3377

Affinity
REAL ESTATE INC

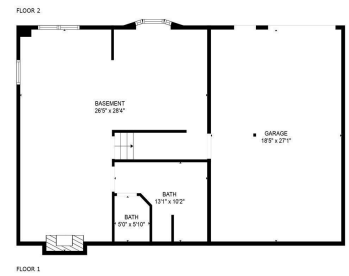
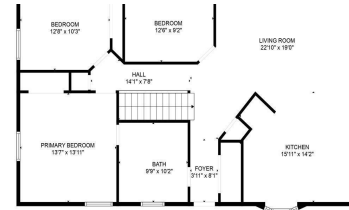
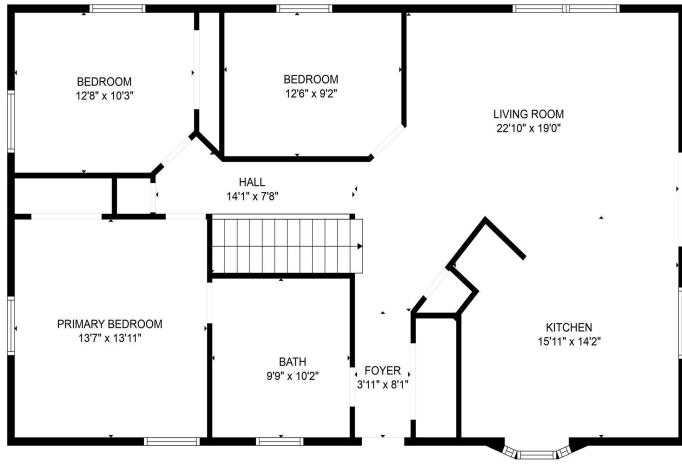
\$399,000
MLS 7040771 Residential
22901 240th Street
Nevis MN 56467



website: www.AffinityRealEstate.com | email: info@affinityrealestate.com | office: 218-237-3333 | fax:218-237-3377



\$399,000
MLS 7040771 Residential
22901 240th Street
Nevis MN 56467



website: www.AffinityRealEstate.com | email: info@affinityrealestate.com | office: 218-237-3333 | fax: 218-237-3377



\$399,000
 MLS 7040771 Residential
 22901 240th Street
 Nevis MN 56467