



MLS 7040808 Lake Home

\$399,900

752 sq ft
2 bedrooms
0 baths

20008 County 84
Akeley MN 56433

Waterfront: Doe

Status: Coming Soon

Description:

Escape to true Northwoods seclusion with this hand-scribed Andersen log home nestled on 14.88 private acres and adjoining 80 acres public land.

Boasting an incredible 1,538 feet of shoreline on Doe Lake, this rare property offers unmatched privacy and natural beauty. A private driveway leads you into a peaceful retreat where a narrow river connects to Mary Lake, creating a unique and scenic waterfront experience.

With no public access, you'll enjoy quiet surroundings, abundant wildlife, and uninterrupted sunset views. Designed for off-the-grid living, the home is equipped with solar power and a deep well, blending rustic charm with self-sufficient convenience.

Whether you're seeking a private getaway, hunting base, or serene lakeside escape, this one-of-a-kind property delivers the ultimate in Minnesota wilderness living.

Additional Details:

Year Built	2007
Lot Acres	14.88
Lot Dimensions	irregular
School District	113
Taxes	\$1,983
Taxes with Assessments	\$2,227
Tax Year	2026

Additional Features:

Basement: None **Fuel:** Array **Heat:** Fireplace(s), Other **Sewer:** Outhouse **Water:** 4-Inch Submersible **Air Conditioning:** None

Driving Directions:

From Park Rapids go 11 miles, turn right onto County 33, go 7.3 miles (crossing Hwy 64). Property is straight ahead at the T



Listed By:
Real Broker, LLC

Affinity Real Estate Inc. participates in the Regional Multiple Listing Service of Minnesota, Inc Broker Reciprocity (sm) program, allowing us to display other broker's listings on our website. All properties are subject to prior sale, change or withdrawal.



Call Affinity Real Estate

218-237-3333

info@affinityrealestate.com



Affinity Real Estate - 600 Park Avenue South - Park Rapids MN 56470



website: www.AffinityRealEstate.com | email: info@affinityrealestate.com | office: 218-237-3333 | fax: 218-237-3377

Affinity
REAL ESTATE INC

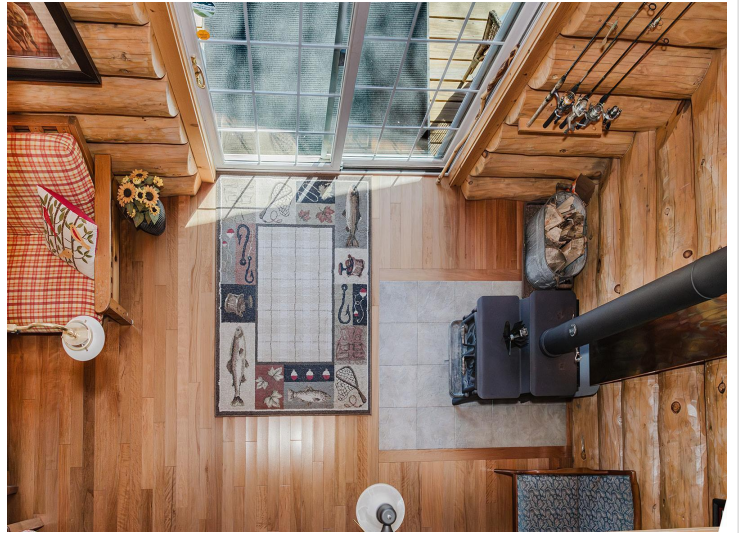
\$399,900
MLS 7040808 Lake Home
20008 County 84
Akeley MN 56433



website: www.AffinityRealEstate.com | email: info@affinityrealestate.com | office: 218-237-3333 | fax: 218-237-3377

Affinity
REAL ESTATE INC

\$399,900
MLS 7040808 Lake Home
2008 County 84
Akeley MN 56433



website: www.AffinityRealEstate.com | email: info@affinityrealestate.com | office: 218-237-3333 | fax: 218-237-3377

Affinity
REAL ESTATE INC

\$399,900
MLS 7040808 Lake Home
20008 County 84
Akeley MN 56433



website: www.AffinityRealEstate.com | email: info@affinityrealestate.com | office: 218-237-3333 | fax:218-237-3377



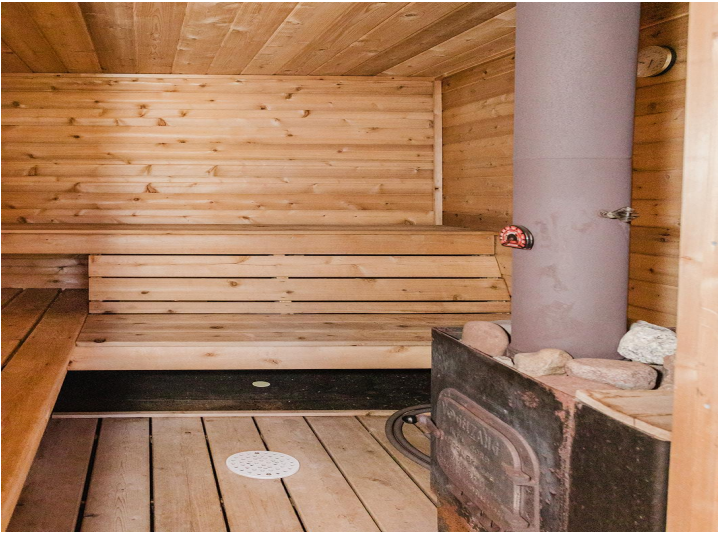
\$399,900
MLS 7040808 Lake Home
20008 County 84
Akeley MN 56433



website: www.AffinityRealEstate.com | email: info@affinityrealestate.com | office: 218-237-3333 | fax:218-237-3377

Affinity
REAL ESTATE INC

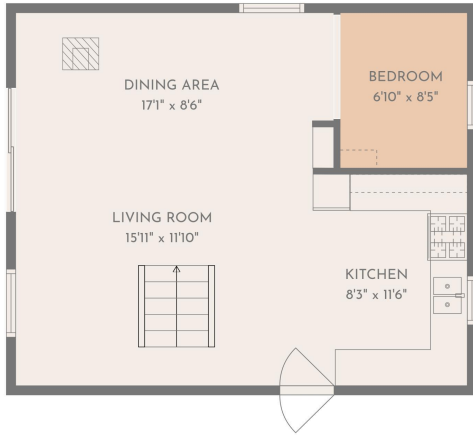
\$399,900
MLS 7040808 Lake Home
20008 County 84
Akeley MN 56433



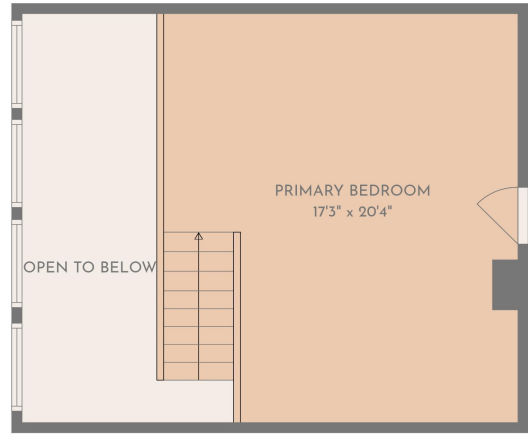
website: www.AffinityRealEstate.com | email: info@affinityrealestate.com | office: 218-237-3333 | fax:218-237-3377

Affinity
REAL ESTATE INC

\$399,900
MLS 7040808 Lake Home
20008 County 84
Akeley MN 56433



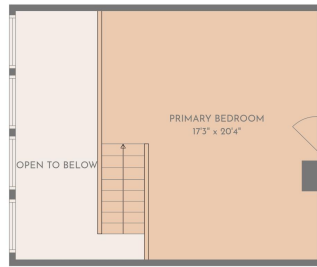
TOTAL: 841 sq. ft.
 1st floor: 491 sq. ft. 2nd floor: 350 sq. ft.
 EXCLUDED AREAS: OPEN TO BELOW: 141 sq. ft. WALLS: 92 sq. ft.
FLOOR PLAN CREATED BY CURISAN AFF. MANAGEMENTS. DIMENSIONS TAKEN FROM BLUEPRINTS BUT NOT GUARANTEED.



TOTAL: 841 sq. ft.
 1st floor: 491 sq. ft. 2nd floor: 350 sq. ft.
 EXCLUDED AREAS: OPEN TO BELOW: 141 sq. ft. WALLS: 92 sq. ft.
FLOOR PLAN CREATED BY CURISAN AFF. MANAGEMENTS. DIMENSIONS TAKEN FROM BLUEPRINTS BUT NOT GUARANTEED.



1st floor



2nd floor

TOTAL: 841 sq. ft.
 1st floor: 491 sq. ft. 2nd floor: 350 sq. ft.
 EXCLUDED AREAS: OPEN TO BELOW: 141 sq. ft. WALLS: 92 sq. ft.
FLOOR PLAN CREATED BY CURISAN AFF. MANAGEMENTS. DIMENSIONS TAKEN FROM BLUEPRINTS BUT NOT GUARANTEED.

website: www.AffinityRealEstate.com | email: info@affinityrealestate.com | office: 218-237-3333 | fax: 218-237-3377



\$399,900
 MLS 7040808 Lake Home
 20008 County 84
 Akeley MN 56433