



MLS 7041248 Residential

\$889,500

2,952 sq ft
3 bedrooms
3 baths

16634 Hightop Way
Cass Lake MN 56633

Status: Active

Description:

Welcome to elevated lake living in the premier development of Tom's Harbor on the highly sought-after Cass Lake Chain of Lakes.

This new (in summer of 2024) upscale home offers 3 bedrooms and 3 bathrooms with a thoughtfully designed custom layout and high-end finishes throughout. From the moment you step inside, you'll appreciate the spacious entryway with access to a convenient half bath and the attached garage. The attached garage offers ample space for vehicles and all your lake toys. Custom wrought iron railings by Cass Lake Metal add a one-of-a-kind, handcrafted touch. This home was skillfully built by Zetah Construction.

The open-concept main level is designed for both comfort and entertaining, featuring a cozy living room with a fireplace and a stunning kitchen complete with Cambria countertops, custom cabinetry, double wall oven, a large center island, and a butler's pantry with a wine cooler to keep everything neatly tucked away. The dining area overlooks the lake, offering beautiful views.

Just off the living room, the sun porch is a standout feature—currently set up with a large hot tub and complete with a garage door to easily bring the outdoors in. This allows views of the back yard patio that is protected by a canopy of mature trees and wetland.

Upstairs, you'll find three spacious bedrooms, including a walk-through bathroom connecting bedrooms two and three with dual vanity, along with a conveniently located laundry room. The massive primary suite is a true retreat, featuring two large walk-in closets, a private sitting area, and a spa-like bathroom with a soaking tub, tiled walk-in shower, dual vanity, and custom cabinetry.

As a member of the Tom's Harbor community, enjoy exceptional amenities including a heated in ground pool, community room and kitchen facility, fish cleaning house, walking trails, beach, and approximately 50+ acres of shared green space. This property also includes a second lot which can be built on- and two boat slips in the protected harbor—an incredible bonus for lake enthusiasts. This lake chain features 8 interconnected lakes and over 25,000 acres of water to explore, fish, and enjoy year-round. Spend your days boating to Star Island, relaxing at sandbars, or cruising to local restaurants.

To savor every sweet moment of your days and to make this property your own, please contact **Affinity Real Estate** for more information. You can move right in and enjoy the up north Minnesota lake life without the hassle of exterior maintenance.

Affinity Real Estate Inc. participates in the Regional Multiple Listing Service of Minnesota, Inc. Broker Reciprocity (sm) program, allowing us to display other broker's listings on our website. All properties are subject to prior sale, change or withdrawal.



218-237-3333
info@affinityrealestate.com
nities, and access to

Additional Details:

Year Built	2024
Lot Acres	0.22
Lot Dimensions	110' x 90'

Affinity Real Estate - 600 Park Avenue South - Park Rapids MN 56470



website: www.AffinityRealEstate.com | email: info@affinityrealestate.com | office: 218-237-3333 | fax:218-237-3377

Affinity
REAL ESTATE INC

\$889,500
MLS 7041248 Residential
16634 Hightop Way
Cass Lake MN 56633



website: www.AffinityRealEstate.com | email: info@affinityrealestate.com | office: 218-237-3333 | fax: 218-237-3377

Affinity
REAL ESTATE INC

\$889,500
MLS 7041248 Residential
16634 Hightop Way
Cass Lake MN 56633



website: www.AffinityRealEstate.com | email: info@affinityrealestate.com | office: 218-237-3333 | fax: 218-237-3377

Affinity
REAL ESTATE INC

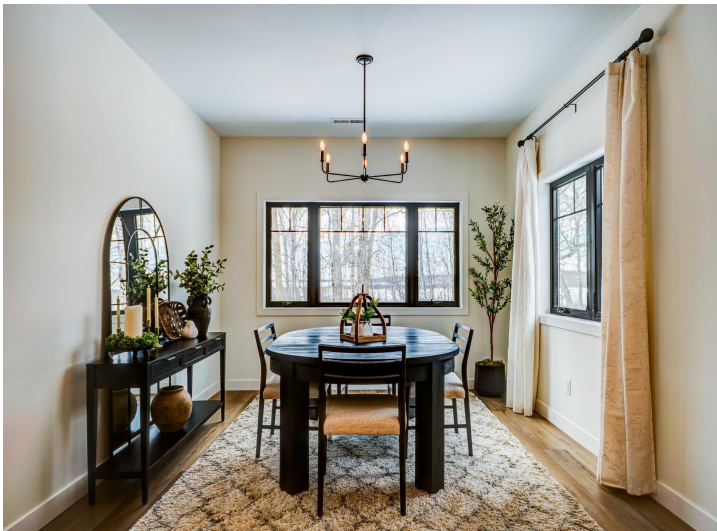
\$889,500
MLS 7041248 Residential
16634 Hightop Way
Cass Lake MN 56633



website: www.AffinityRealEstate.com | email: info@affinityrealestate.com | office: 218-237-3333 | fax: 218-237-3377

Affinity
REAL ESTATE INC

\$889,500
MLS 7041248 Residential
16634 Hightop Way
Cass Lake MN 56633



website: www.AffinityRealEstate.com | email: info@affinityrealestate.com | office: 218-237-3333 | fax:218-237-3377

Affinity
REAL ESTATE INC

\$889,500
MLS 7041248 Residential
16634 Hightop Way
Cass Lake MN 56633



website: www.AffinityRealEstate.com | email: info@affinityrealestate.com | office: 218-237-3333 | fax:218-237-3377



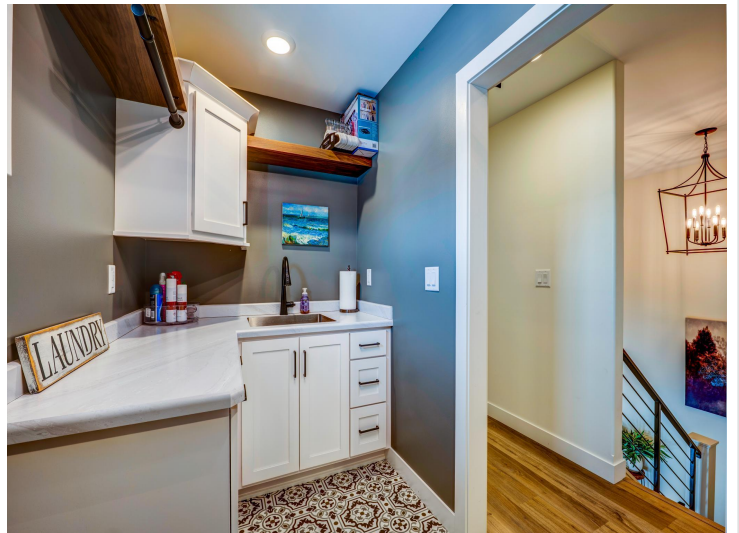
\$889,500
MLS 7041248 Residential
16634 Hightop Way
Cass Lake MN 56633



website: www.AffinityRealEstate.com | email: info@affinityrealestate.com | office: 218-237-3333 | fax: 218-237-3377



\$889,500
MLS 7041248 Residential
16634 Hightop Way
Cass Lake MN 56633



website: www.AffinityRealEstate.com | email: info@affinityrealestate.com | office: 218-237-3333 | fax:218-237-3377



\$889,500
MLS 7041248 Residential
16634 Hightop Way
Cass Lake MN 56633



website: www.AffinityRealEstate.com | email: info@affinityrealestate.com | office: 218-237-3333 | fax:218-237-3377



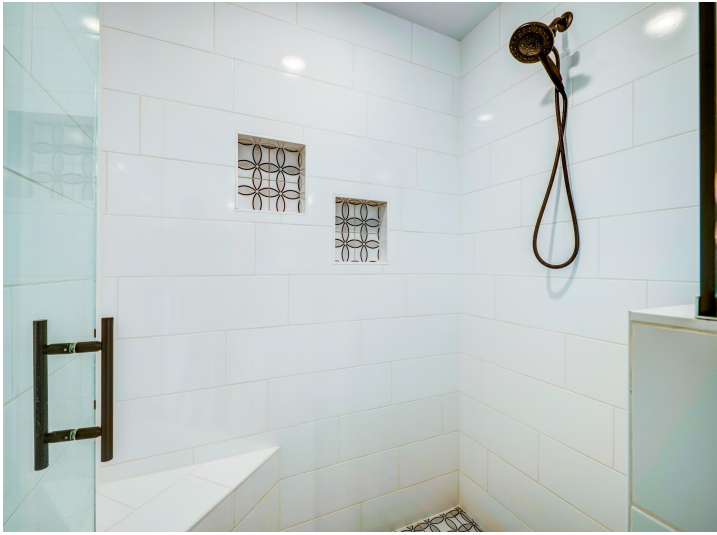
\$889,500
MLS 7041248 Residential
16634 Hightop Way
Cass Lake MN 56633



website: www.AffinityRealEstate.com | email: info@affinityrealestate.com | office: 218-237-3333 | fax: 218-237-3377

Affinity
REAL ESTATE INC

\$889,500
MLS 7041248 Residential
16634 Hightop Way
Cass Lake MN 56633



website: www.AffinityRealEstate.com | email: info@affinityrealestate.com | office: 218-237-3333 | fax: 218-237-3377

Affinity
REAL ESTATE INC

\$889,500
MLS 7041248 Residential
16634 Hightop Way
Cass Lake MN 56633



website: www.AffinityRealEstate.com | email: info@affinityrealestate.com | office: 218-237-3333 | fax:218-237-3377



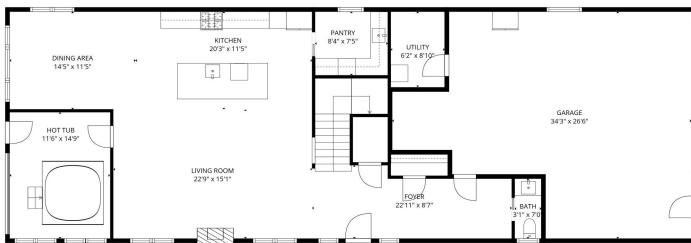
\$889,500
MLS 7041248 Residential
16634 Hightop Way
Cass Lake MN 56633



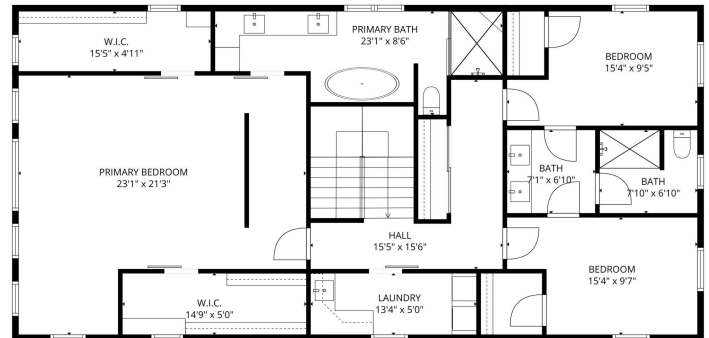
website: www.AffinityRealEstate.com | email: info@affinityrealestate.com | office: 218-237-3333 | fax:218-237-3377

Affinity
REAL ESTATE INC

\$889,500
MLS 7041248 Residential
16634 Hightop Way
Cass Lake MN 56633



TOTAL: 2568 sq. ft.
 1st floor: 1125 sq. ft., 2nd floor: 1443 sq. ft.
 EXCLUDED AREAS: GARAGE: 696 sq. ft., UTILITY: 55 sq. ft., FIREPLACE: 4 sq. ft.,
 WALLS: 197 sq. ft.



TOTAL: 2568 sq. ft.
 1st floor: 1125 sq. ft., 2nd floor: 1443 sq. ft.
 EXCLUDED AREAS: GARAGE: 696 sq. ft., UTILITY: 55 sq. ft., FIREPLACE: 4 sq. ft.,
 WALLS: 197 sq. ft.

website: www.AffinityRealEstate.com | email: info@affinityrealestate.com | office: 218-237-3333 | fax: 218-237-3377



\$889,500
 MLS 7041248 Residential
 16634 Hightop Way
 Cass Lake MN 56633



website: www.AffinityRealEstate.com | email: info@affinityrealestate.com | office: 218-237-3333 | fax:218-237-3377



\$889,500
MLS 7041248 Residential
16634 Hightop Way
Cass Lake MN 56633



website: www.AffinityRealEstate.com | email: info@affinityrealestate.com | office: 218-237-3333 | fax:218-237-3377

Affinity
REAL ESTATE INC

\$889,500
MLS 7041248 Residential
16634 Hightop Way
Cass Lake MN 56633



website: www.AffinityRealEstate.com | email: info@affinityrealestate.com | office: 218-237-3333 | fax:218-237-3377

Affinity
REAL ESTATE INC

\$889,500
MLS 7041248 Residential
16634 Hightop Way
Cass Lake MN 56633



website: www.AffinityRealEstate.com | email: info@affinityrealestate.com | office: 218-237-3333 | fax:218-237-3377



\$889,500
MLS 7041248 Residential
16634 Hightop Way
Cass Lake MN 56633