



MLS 7041702 Residential

**\$795,000**

3,828 sq ft  
5 bedrooms  
4 baths

37895 Height Of Land Drive  
Rochert MN 56578

Status: Active

**Description:**

Set on 12 pristine acres directly across from Height of Land lake, this exceptional property delivers the kind of setting people search years to find—and rarely do. Towering trees, a private pond, and a true park-like landscape create a serene, picture-perfect backdrop that feels like your own private retreat, yet remains conveniently located.

The home itself offers an impressive 3,828 square feet of thoughtfully designed living space, featuring 5 bedrooms and 3 bathrooms.

Inside, you'll find a striking open-concept layout highlighted by a vaulted living room and a stunning gas, stone-faced fireplace that anchors the space with warmth and character. The kitchen has been tastefully updated and flows seamlessly for both everyday living and entertaining.

Recent upgrades—including the roof, many windows & patio door, deck, kitchen cabinetry w/ granite countertops, SS appliances, and more—mean you can move in with confidence and enjoy modern comfort without the hassle of major projects.

The owner's suite provides a private escape, while the expansive lower-level walkout is built for entertaining and relaxation. Here, you'll find a massive family room complete with a pool table, a fully featured bar, and even a dedicated hot tub room—your personal resort at home.

For those who need space beyond the home, the property truly excels. A remarkable 40 x 56 heated and fully finished shop with in-floor heat offers endless possibilities—perfect for storing recreational vehicles, working on projects, or pursuing hobbies year-round. An outdoor wood boiler system provides efficient auxiliary heat to the house, garage, and shop, adding both practicality and cost-saving efficiency.

This is more than a home—it's a lifestyle property offering privacy, space, and versatility in one of the most scenic settings in the region. If you've been waiting for something truly special, this is it.

**Additional Details:**

Year Built 1999

Lot Acres 12

Listed By 650 x 950 minus 3 acres TBD.  
Counselor Realty Detroit Lakes

Affinity Real Estate Inc. participates in the Regional Multiple Listing Service of Minnesota, Inc Broker Reciprocity (sm) program, allowing us to display other broker's listings on our website. All properties are subject to prior sale, change or withdrawal.

Tax Year 2026

Taxes with Assessments \$3,274



**Call Affinity Real Estate**

**218-237-3333**

**info@affinityrealestate.com**



**Affinity Real Estate - 600 Park Avenue South - Park Rapids MN 56470**

**Additional Features:**

**Basement:** Finished, Walkout **Fuel:** Array **Garage:** 2 **Heat:** Boiler, Forced Air, Fireplace(s), Hot Water, Outdoor Boiler **Sewer:** Tank with Drainage



website: [www.AffinityRealEstate.com](http://www.AffinityRealEstate.com) | email: [info@affinityrealestate.com](mailto:info@affinityrealestate.com) | office: 218-237-3333 | fax:218-237-3377



**\$795,000**  
MLS 7041702 Residential  
37895 Height Of Land Drive  
Rochert MN 56578



website: [www.AffinityRealEstate.com](http://www.AffinityRealEstate.com) | email: [info@affinityrealestate.com](mailto:info@affinityrealestate.com) | office: 218-237-3333 | fax:218-237-3377



**\$795,000**  
MLS 7041702 Residential  
37895 Height Of Land Drive  
Rochert MN 56578



website: [www.AffinityRealEstate.com](http://www.AffinityRealEstate.com) | email: [info@affinityrealestate.com](mailto:info@affinityrealestate.com) | office: 218-237-3333 | fax:218-237-3377



**\$795,000**  
MLS 7041702 Residential  
37895 Height Of Land Drive  
Rochert MN 56578



website: [www.AffinityRealEstate.com](http://www.AffinityRealEstate.com) | email: [info@affinityrealestate.com](mailto:info@affinityrealestate.com) | office: 218-237-3333 | fax: 218-237-3377

**Affinity**  
REAL ESTATE INC

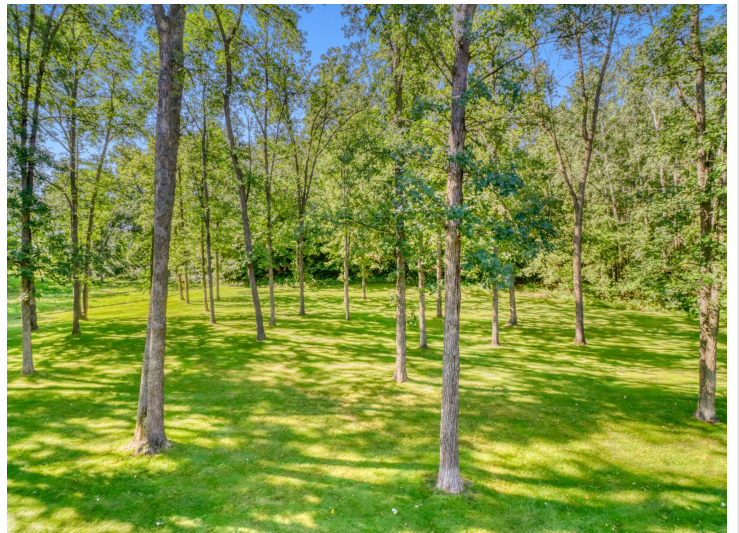
**\$795,000**  
MLS 7041702 Residential  
37895 Height Of Land Drive  
Rochert MN 56578



website: [www.AffinityRealEstate.com](http://www.AffinityRealEstate.com) | email: [info@affinityrealestate.com](mailto:info@affinityrealestate.com) | office: 218-237-3333 | fax:218-237-3377



**\$795,000**  
MLS 7041702 Residential  
37895 Height Of Land Drive  
Rochert MN 56578



website: [www.AffinityRealEstate.com](http://www.AffinityRealEstate.com) | email: [info@affinityrealestate.com](mailto:info@affinityrealestate.com) | office: 218-237-3333 | fax:218-237-3377



**\$795,000**  
MLS 7041702 Residential  
37895 Height Of Land Drive  
Rochert MN 56578



website: [www.AffinityRealEstate.com](http://www.AffinityRealEstate.com) | email: [info@affinityrealestate.com](mailto:info@affinityrealestate.com) | office: 218-237-3333 | fax:218-237-3377



**\$795,000**  
MLS 7041702 Residential  
37895 Height Of Land Drive  
Rochert MN 56578



website: [www.AffinityRealEstate.com](http://www.AffinityRealEstate.com) | email: [info@affinityrealestate.com](mailto:info@affinityrealestate.com) | office: 218-237-3333 | fax:218-237-3377



**\$795,000**  
MLS 7041702 Residential  
37895 Height Of Land Drive  
Rochert MN 56578



website: [www.AffinityRealEstate.com](http://www.AffinityRealEstate.com) | email: [info@affinityrealestate.com](mailto:info@affinityrealestate.com) | office: 218-237-3333 | fax: 218-237-3377

**Affinity**  
REAL ESTATE INC

**\$795,000**  
MLS 7041702 Residential  
37895 Height Of Land Drive  
Rochert MN 56578



website: [www.AffinityRealEstate.com](http://www.AffinityRealEstate.com) | email: [info@affinityrealestate.com](mailto:info@affinityrealestate.com) | office: 218-237-3333 | fax:218-237-3377

**Affinity**  
REAL ESTATE INC

**\$795,000**  
MLS 7041702 Residential  
37895 Height Of Land Drive  
Rochert MN 56578



website: [www.AffinityRealEstate.com](http://www.AffinityRealEstate.com) | email: [info@affinityrealestate.com](mailto:info@affinityrealestate.com) | office: 218-237-3333 | fax:218-237-3377

**Affinity**  
REAL ESTATE INC

**\$795,000**  
MLS 7041702 Residential  
37895 Height Of Land Drive  
Rochert MN 56578



website: [www.AffinityRealEstate.com](http://www.AffinityRealEstate.com) | email: [info@affinityrealestate.com](mailto:info@affinityrealestate.com) | office: 218-237-3333 | fax: 218-237-3377

**Affinity**  
REAL ESTATE INC

**\$795,000**  
MLS 7041702 Residential  
37895 Height Of Land Drive  
Rochert MN 56578



website: [www.AffinityRealEstate.com](http://www.AffinityRealEstate.com) | email: [info@affinityrealestate.com](mailto:info@affinityrealestate.com) | office: 218-237-3333 | fax:218-237-3377

**Affinity**  
REAL ESTATE INC

**\$795,000**  
MLS 7041702 Residential  
37895 Height Of Land Drive  
Rochert MN 56578



website: [www.AffinityRealEstate.com](http://www.AffinityRealEstate.com) | email: [info@affinityrealestate.com](mailto:info@affinityrealestate.com) | office: 218-237-3333 | fax:218-237-3377

**Affinity**  
REAL ESTATE INC

**\$795,000**  
MLS 7041702 Residential  
37895 Height Of Land Drive  
Rochert MN 56578



website: [www.AffinityRealEstate.com](http://www.AffinityRealEstate.com) | email: [info@affinityrealestate.com](mailto:info@affinityrealestate.com) | office: 218-237-3333 | fax:218-237-3377

**Affinity**  
REAL ESTATE INC

**\$795,000**  
MLS 7041702 Residential  
37895 Height Of Land Drive  
Rochert MN 56578



website: [www.AffinityRealEstate.com](http://www.AffinityRealEstate.com) | email: [info@affinityrealestate.com](mailto:info@affinityrealestate.com) | office: 218-237-3333 | fax:218-237-3377

**Affinity**  
REAL ESTATE INC

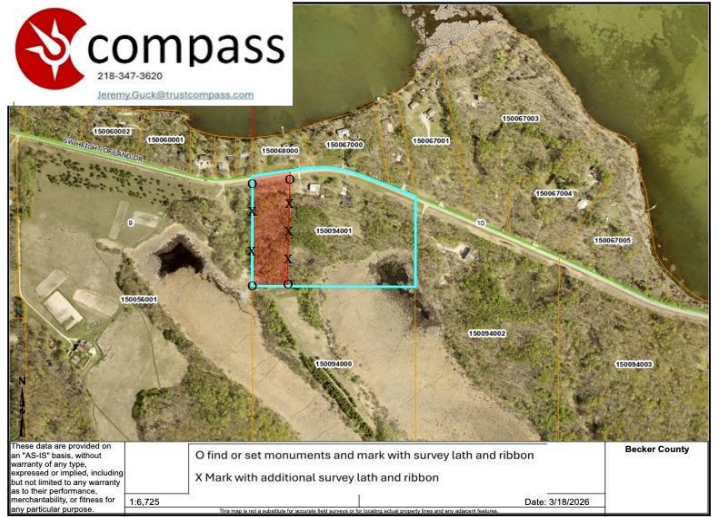
**\$795,000**  
MLS 7041702 Residential  
37895 Height Of Land Drive  
Rochert MN 56578



website: [www.AffinityRealEstate.com](http://www.AffinityRealEstate.com) | email: [info@affinityrealestate.com](mailto:info@affinityrealestate.com) | office: 218-237-3333 | fax:218-237-3377

**Affinity**  
REAL ESTATE INC

**\$795,000**  
MLS 7041702 Residential  
37895 Height Of Land Drive  
Rochert MN 56578



website: [www.AffinityRealEstate.com](http://www.AffinityRealEstate.com) | email: [info@affinityrealestate.com](mailto:info@affinityrealestate.com) | office: 218-237-3333 | fax:218-237-3377



**\$795,000**  
 MLS 7041702 Residential  
 37895 Height Of Land Drive  
 Rochert MN 56578

website: [www.AffinityRealEstate.com](http://www.AffinityRealEstate.com) | email: [info@affinityrealestate.com](mailto:info@affinityrealestate.com) | office: 218-237-3333 | fax:218-237-3377



**\$795,000**

MLS 7041702 Residential  
37895 Height Of Land Drive  
Rochert MN 56578