



MLS 7042254 Residential

\$339,900

1,450 sq ft
3 bedrooms
1 baths

25344 Lagrand Road
Browerville MN 56438

Status: Active

Description:

Charming and well-maintained 3-bedroom, 1 full bath home situated on a spacious lot of over 1 acre at the end of a quiet dead-end road. This property offers excellent curb appeal with a classic brick front and durable steel siding for low-maintenance living. Inside, the home has been very well cared for and provides a comfortable layout for everyday living. Outside, you'll find a large 30x40 storage shed/workshop—perfect for hobbies, extra storage, or workspace. Enjoy the privacy and peaceful setting while still having plenty of room for outdoor activities, gardening, or additional improvements. A great opportunity for those looking for space, functionality, and a well-kept home in a quiet location.

Additional Details:

Year Built	1976
Lot Acres	1.133
Lot Dimensions	190x240x190x240
Garage Stalls	2
School District	2268
Taxes	\$2,190
Taxes with Assessments	\$2,190
Tax Year	2025

Additional Features:

Fuel: Array **Heat:** Baseboard, Wood Stove

Driving Directions:

From Browerville head North on County Road 16 for 1.5 miles to left on County Road 62 for 1 mile to right to stay on County Road 62 for 1/2 mile to left on 255th Avenue for 1/2 mile to left on Lagrand Avenue to house with sign in yard on the right.



Listed By:
Century 21 First Realty, Inc.

Affinity Real Estate Inc. participates in the Regional Multiple Listing Service of Minnesota, Inc Broker Reciprocity (sm) program, allowing us to display other broker's listings on our website. All properties are subject to prior sale, change or withdrawal.



Call Affinity Real Estate

218-237-3333

info@affinityrealestate.com



Affinity Real Estate - 600 Park Avenue South - Park Rapids MN 56470



website: www.AffinityRealEstate.com | email: info@affinityrealestate.com | office: 218-237-3333 | fax:218-237-3377



\$339,900
MLS 7042254 Residential
25344 Lagrand Road
Browerville MN 56438



website: www.AffinityRealEstate.com | email: info@affinityrealestate.com | office: 218-237-3333 | fax:218-237-3377

Affinity
REAL ESTATE INC

\$339,900
MLS 7042254 Residential
25344 Lagrand Road
Browerville MN 56438



website: www.AffinityRealEstate.com | email: info@affinityrealestate.com | office: 218-237-3333 | fax: 218-237-3377

Affinity
REAL ESTATE INC

\$339,900
MLS 7042254 Residential
25344 Lagrand Road
Browerville MN 56438



website: www.AffinityRealEstate.com | email: info@affinityrealestate.com | office: 218-237-3333 | fax:218-237-3377



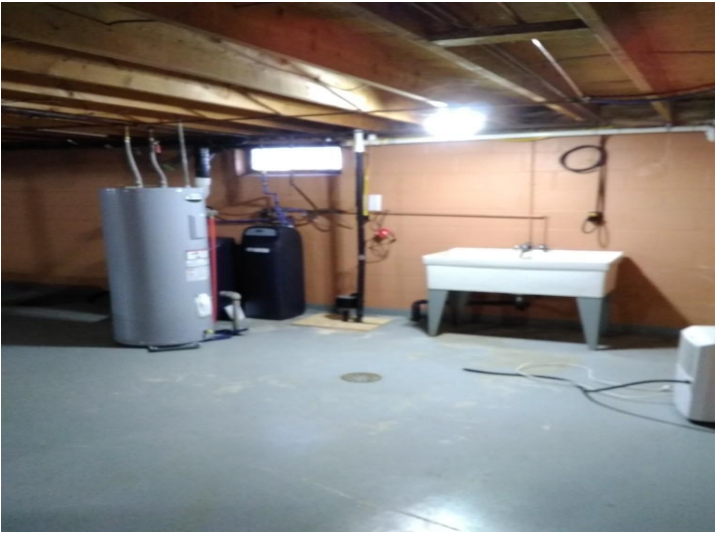
\$339,900
MLS 7042254 Residential
25344 Lagrand Road
Browerville MN 56438



website: www.AffinityRealEstate.com | email: info@affinityrealestate.com | office: 218-237-3333 | fax:218-237-3377



\$339,900
MLS 7042254 Residential
25344 Lagrand Road
Browerville MN 56438



website: www.AffinityRealEstate.com | email: info@affinityrealestate.com | office: 218-237-3333 | fax:218-237-3377



\$339,900
MLS 7042254 Residential
25344 Lagrand Road
Browerville MN 56438



website: www.AffinityRealEstate.com | email: info@affinityrealestate.com | office: 218-237-3333 | fax:218-237-3377



\$339,900
MLS 7042254 Residential
25344 Lagrand Road
Browerville MN 56438



website: www.AffinityRealEstate.com | email: info@affinityrealestate.com | office: 218-237-3333 | fax: 218-237-3377



\$339,900
MLS 7042254 Residential
25344 Lagrand Road
Browerville MN 56438